

The Saskatchewan Brick Register

A Record of Bricks Donated

to the

Claybank Brick Plant Historical Society

for the

North American Brick Type Collection



Compiled by

Frank Korvemaker

59 Compton Road, Regina, Saskatchewan S4S 2Y2

E-Mail: fkorvemaker@accesscomm.ca

Revised: April 6, 2023

The Saskatchewan Brick Register

Index (by Donor Number)

Baillie, Lois.....	18	Korvemaker, Frank	21
Barbeau, George.....	28	Korvemaker, Tiemen.....	45
Battleford, Town of.....	10	Krehbiel, Rick	56
Bemister, Jon	59		
Birley, Susan	3	Lammle, Don	50
Black, Don.....	60	Landry, Art	23
Bouvier, Gerry.....	35		
Brace, Ian	5	Moats, Rick.....	44
Brodziak, Ed.....	29	Moose Jaw, City of.....	26
Buriany, Kathy.....	47		
Burns, Patrick.....	31	Olynek, Ray	9
		Oystryk, John	53
Carlson, Abe & Bjorg.....	42	Oystryk, Les	19
Chaplin, Jim.....	38		
Craik Museum.....	30	Paragon Industries	14
		Paton, Adrian.....	34
Dixon, Jeannette & Gary	6	Pedersen, Maureen	13
Dominion Construction	20	Pugh, Garth	8, 12
Duer, Norm.....	32	P3Architecture.....	51
Easton, Larry.....	40	Robinson, Leigh.....	41
		Royal Sask. Museum	7
Flaman, Bernie.....	39		
Flegel, Dan	55	Saskatoon, City of.....	33
Foster, Velma	52	Saunders, Ivan	48
		Sinclair, Terry	49
Green, Myrna	2	Smith, Ryan	54
Gruscynski, Adam & Mavis		SPMC, Regina	25
Matheson.....	37		
		Taylor, James	24
Herrington, Ross	22		
Hawes, Rick	1	Unknown	4, 17
Hotel Saskatchewan	15		
Hryniuk, Marg	46	Walker, Dan.....	36
		Walker, Faye, Carnduff.....	27
Isaak, Carey	43	Weyburn Heritage Village	16
Keating, Denton	57	Yorkton Brick Plant Heritage	
Kenzle, Francine	11	Society	58

The Saskatchewan Brick Register

Alphabetical Index (by Name or Number on Brick)

NUMBERS

I	21.10
III	21.10
V	21.10
059	21.80
6 0 E 1	44.10
106 Sandface Modular	21.89

A

A 60 H W 345.....	1.1
ACME BRICK CO LAPERLA A	37.1
A C P	24.6
A C P Co	40.7
A. D.	21.12
ALSIP	21.4, 21.60
A. P. GREEN EMPIRE D. P.	21.26
ARTBRICK YM TRADE MARK	17.4
A S Co	1.11,
1.13, 17.2, 21.15, 21.30, 21.97,	
22.11, 24.3, 40.14, 42.1, 46.1, 53.2	
ASHLAND EMPIRE CROWN	44.7

B

B & C	3.1, 21.59, 47.4
B. B. Co	21.29
BALDWIN	54.1
BELDEN	54.2
BISON	34.4

C

CANADA	9.4
CANADA CANADA	6.4,
21.43, 21.44, 21.45	
CANADA CANADA CANADA ...	17.3
CANADA ECP ECP CANADA ..	21.46
CANADA I X L	14.5, 21.47
CANADA CANADA 18 93	6.11
CANADA CANADA 35 7	6.7
CANADA CANADA 43 82	21.78

CATTYBROOK BRICK Co. Limited

BRISTOL	21.20
C C	21.92
CLAYBANK	13.1, 19.1
CLAYBANK DP	58.2
CLAYBURN	31.1
CLAYBURN MADE IN CANADA ...	12.1
COOKSVILLE PATENTED 1926 ...	3.2,
49.1	
CR & FB CO AJAX	21.1

D

DEFCO – X CANADA	34.3
Des Moines	54.4
D-Moines	54.3
DIAMOND	51.1
DOMTAR	21.88

E

EMPIRE 2 ½ x 12 x 12	1.2,
1.7, 21.26,	
ESTEVAN CANADA ESTEVAN ...	21.54
ESTEVAN, SASKATCHEWAN.....	22.17
EVANS & HOWARD ST LOUIS	58.1
EXCELSIOR	21.64

G

G P	22.16, 53.1
-----------	-------------

H

H B C 16	21.77
H B C 150	21.77
H.B.W	6.4
HEBRON, N D	21.96, 39.1, 44.4
H S (or H . S)	12.2, 21.5, 24.2, 44.3, 58.4
HYDRAULIC	20.1
HYDRAULIC PRESSED BRICK.....	51.1
HY – TEX ...	43.2

The Saskatchewan Brick Register

I

I C P ESTEVAN CANADA	15.2
I - X L	5.2,
11.1, 21.36, 22.1, 21.79, 21.85,	
21.93, 21.99, 22.3, 40.17, 40.20, 44.1	
I - X L CANADA	45.1, 47.8
I - X L MEDICINE HAT BRICK & TILE	
CO LTD	21.33
IXL (no hyphen).....	21.85, 21.99, 40.17

K

KRUZITE	1.5
---------------	-----

L

L du B Co.	27.1
L L L	35.1
Ludowici – Celadon	21.90

M

MADE IN CANADA	21.17
MADE IN CANADA CHIPMAN	
MADE IN CANADA	48.1
MASSILLON S. & F. B. Co	
MASSILLON OH	21.25
M B L B Co.	21.24
MEDICINE HAT BRICK & TILE	
CANADA	21.34
MEDICINE HAT BRICK & TILE	
COMPANY	14.2, 14.3
MILTON	21.21
MOROSOF	58.5
M S Co	21.9, 21.30

P

PAT 9-21-20	15.3
P. BUTTE	21.38, 39.3, 43.1
PERRY	21.70,
22.2	
PERRY Redcliff	21.69, 22.14

POSTON PATENTED PROCESS,	
RAINSTRUCK, POSTON BRICK	
COMPANY, SPRINGFIELD,	
ILLINOIS	21.2
PREMIER	6.2, 21.6, 21.39

R

RAINBOW, POSTON BRICK COMPANY,	
SPRINGFIELD, POSTON	
PATENTED	8.1
R B	46.2
R B C	30.1
REDCLIFF	21.16
REDCLIFF BRICK & COAL CO	6.3,
21.7, 21.8, 21.13, 21.41, 33.2, 40.3,	
58.6	
REDCLIFF PREMIER BRICK	22.4
REDCLIFF PREMIER BRICK Co	
LTD	22.10, 22.18, 47.6
ROSTHERN	11.2, 32.1
“Roman Numeral” - various.....	21.10, 55.1
R C P Co	21.40
R P B Co	9.1, 59.1
“Ruf-Tex, Claybank”	22.7, 22.12, 32.2

S

SASKATCHEWAN CLAY PRODUCTS	
ESTEVAN SASK. CANADA ..	21.55, 44.9
SASK CLAY PRODUCTS ESTEVAN	
CANADA	15.1, 21.63, 25.1, 25.2
“Sequoia Ridge”	21.81
S H (see: H . S)	
SIDNEY	21.18, 21.31
SNYDER	1.6, 21.65, 56.1
STAR	21.56

T

TAPESTRY	9.3
T.P. MOKA	21.71, 21.72, 21.78

V

VICA. B. Co	31.2
-------------------	------

The Saskatchewan Brick Register

VIRDEN 21.27

Y

W

W B1.12, 2.3, 21.37, 30.2, 40.1, 40.2, 43.3

WESCLAY REGINA SASK CANADA

B 191 47.5

W R D 24.1

W. W. CO. 21.23

W. W. M. J. 18.1, 26.1

YORKTON 58.7

YOUNG'S GLENBOIG 7.1

The Saskatchewan Brick Register

Introduction:

This brick collection started in the 1980s, while I was working at the Heritage Branch of the Saskatchewan government. However, no concerted effort was made to formally list the brick donors until 2009, when the first edition of this Register was initiated.

Brick acquisition was sporadic, as I came across interesting bricks, or as people brought them to me. Eventually the storage space in my office became too crowded and, starting in 2004, the collection was moved to the Claybank Brick Plant National Historic Site of Canada, located about an hour's drive SW of Regina.



Office storage ca. 2004 on top of book cases



Auxiliary brick storage on shelving

and

in boxes at the Claybank Brick Plant

Part of the reason for initiating the collection was to link specific bricks with dateable buildings. Subsequently, that information might be useful for applying approximate dates to buildings faced with identical bricks.

In addition, the collection was designed to complement the bricks found at the Claybank Brick Plant, to provide a more interesting and informative experience for visitors to the site. Over 300 of those bricks have been placed on display in the West Stock Shed, mainly on eight of the metal cars used to transport unfired bricks throughout the brick plant during the manufacturing, drying and firing process. Others are placed on the concrete floor. A further hundred bricks, not made at Claybank, are on display in the Hand Mould Shop. And several hundred are in storage, bringing the collection total to about 600 bricks, plus thousands of bricks stockpiled on pallets – made at the plant or salvaged from historic buildings.

Information relating to bricks made in Saskatchewan was partly gleaned from Larry Buhr's 1997 University of Saskatchewan. M.A. Thesis, entitled:

[An archaeological survey of brick manufacture in Saskatchewan](#)

The Saskatchewan Brick Register

Partial view of the brick display in the West Stock Shed at the Claybank Brick Plant –
made from bricks found on-site



Car # 1



Car # 2



Car # 3



Car # 4



Car # 5



Car # 6



Car # 7



Car # 8

For further information or to report errors, please contact:

Frank Korvemaker, M.S.M.; S.A.A. (Hon.)

Archaeologist / Archivist / Construction Historian

59 Compton Road

Regina, Saskatchewan, S4S 2Y2

Tel: (306) 586-1405 E-Mail: fkorvemaker@accesscomm.ca

and

Hon. Corporate Archivist for the Saskatchewan Association of Architects

For information on the Association: <http://saskarchitects.com/>

The Saskatchewan Brick Register

Brick Display in the Hand Mould Shop –

Donated to the Claybank Collection



Section 1: United States of America bricks

The Saskatchewan Brick Register



Section 2 – Alberta bricks



Section 3 – Manitoba bricks

The Saskatchewan Brick Register



Section 4 - Ontario, New Brunswick, Nova Scotia, British Columbia bricks



Section 5 – Saskatchewan bricks

The Saskatchewan Brick Register



Section 6 – Miscellaneous and United Kingdom bricks



Section 7 - Miscellaneous

The Saskatchewan Brick Register

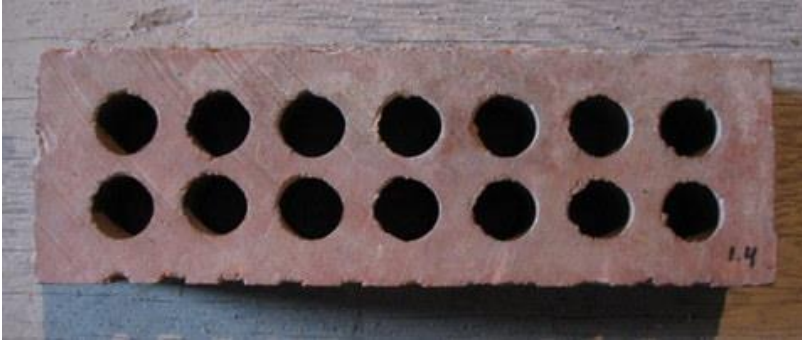
1. Donor: Rick Hawes, Craven, Sask.

- 1.1 number of bricks: 4
description: grey fire brick, with concave and convex ends, and inscription: **A60, HW 345** (Might be a Harbison Walker product.)
source: unknown, from IPSCO Plant, Regina, Sask.
building date: unknown
measures: 8 x 2 $\frac{7}{8}$ x 2 $\frac{7}{8}$ inches
donated: June 8, 1999
- 1.2 number of bricks: 1
description: **EMPIRE 2 1/2 x 12 x 12**, yellow fire brick
source: from Royalite Oil Refinery, Saskatoon
building date: unknown: demolished in late 1950s or early 1960s
measures: 12 x 12 x 2 $\frac{1}{2}$ inches
donated: June 8, 1999
- 1.3 number of bricks: 1
description: Filler brick, yellow, partly broken
source: unknown; from Hawes's yard, Regina, Sask.
building date: unknown
measures: 8 x 3 $\frac{3}{4}$ x 2 $\frac{1}{8}$ inches
donated: June 22, 1999



- 1.4 number of bricks: 1
description: red face brick with a bark-like texture with 11 grooves on back, and 14 holes
source: unknown; from Hawes's yard, Regina, Sask.
building date: unknown
measures: 11 $\frac{3}{4}$ x 3 $\frac{3}{4}$ x 2 $\frac{1}{4}$ inches
donated: June 22, 1999

The Saskatchewan Brick Register



- 1.5 number of bricks: 1
description: grey fire brick, with inscription **A. P. GREEN KRUZITE**
source: from IPSCO Plant, Regina, Sask.
Manufacturer: A.P. Green refractories Ltd., Mexico, Missouri
building date: unknown
measures: 8 $\frac{7}{8}$ x 4 $\frac{1}{2}$ x 2 $\frac{7}{8}$ inches
donated: June 8, 1999



- 1.6 number of bricks: 2
description: cream face brick, with inscription **SNYDER**
source: unknown, from property in Regina, Sask.
Manufacturer: Andrew Snyder, Portage la Prairie, Manitoba
building date: unknown
measures: 8 $\frac{1}{8}$ x 3 $\frac{7}{8}$ x 2 $\frac{1}{4}$ inches
donated: July , 1999
- 1.7 number of bricks: 1
description: **EMPIRE 2 1/2 x 12 x 18**, yellow fire brick
source: from Royalite Oil Refinery, Saskatoon
building date: unknown: demolished in late 1950s or early 1960s
measures: 12 x 12 x 2 $\frac{1}{2}$ inches
donated: Oct. 20, 1999

The Saskatchewan Brick Register

- | | |
|------|---|
| 1.8 | number of bricks: 3
description: Red face bricks, possibly from the Redcliff Brick Plant, Redcliff, Alberta, with a frog on one side.
source: RM of Longlaketon # 219; NW 34-21-21-w2m – chimney from a sod house.
building date: unknown
measures: 8 1/8 x 3 7/8 x 2 1/4 inches
donated: November 10, 1999 |
| 1.9 | number of bricks: 5
description: Red face bricks, possibly from the Redcliff Brick and Coal Plant, Redcliff, Alberta, with a deep frog on one side.
source: RM of Longlaketon # 219; SW 28-21-21-w2m – chimney from a wood frame house
building date: unknown
measures: 8 1/4 x 3 3/4 x 2 3/8 inches
donated: April 27, 2000 |
| 1.10 | number of bricks: 2
description: Grey bricks, without a frog on one side; one brick partly broken
source: RM of Longlaketon # 219; SW 28-21-21-w2m – chimney from a wood frame house.
building date: unknown
measures: 8 1/4 x 3 15/16 x 2 1/4 inches
donated: 27 April 2000 |
| 1.11 | number of bricks: 1
description: light yellow, with a frog on one side; and inscription “ A S Co ”
source: Public School, Radisson.
Manufacturer: A. Snyder and Company, Portage la Prairie, Manitoba
building date: unknown
measures: 8 1/4 x 3 3/4 x 2 1/4 inches
donated: 6 January 2002 |

The Saskatchewan Brick Register

- 1.12 number of bricks: 1
description: grey smooth face brick, with a frog on one side; and inscription “**W B**”
source: Public School, Radisson - chimney
building date: 1916
manufacturer: Winnipeg Brick Company, Winnipeg, Manitoba
measures: $8\frac{1}{4} \times 3\frac{3}{4} \times 2\frac{1}{8}$ inches / 208 x 93 x 54 mm
weight: 4 lb 4 oz / 1.9 kg
donated: 29 Sept. 2015



- 1.13 number of bricks: 2
description: pale yellow smooth face brick, with a frog on one side; and inscription “**A S Co**”
source: Public School, Radisson
building date: 1916
manufacturer: Andrew Snyder & Company, Portage La Prairie, Manitoba
measures: $8\frac{1}{4} \times 3\frac{7}{8} \times 2\frac{1}{4}$ inches / 210 x 96 x 57 mm
weight: 3 lb 14 oz / 1.79 kg
donated: 29 Sept. 2015



The Saskatchewan Brick Register

- 1.14 number of bricks: 1
 description: grey smooth face brick, without any frog or inscription – reportedly made
 by Radisson Brick Company – possibly a sand-lime brick
 source: unknown
 building date: unknown
 measures: 8 ¼ x 4 x 2 ¼ inches / 210 x 100 x 55 mm
 weight: 4 lb, 2 oz / 1.9 kg
 donated: 29 Sept. 2015



The Saskatchewan Brick Register

2. Donor: Myrna & Donald Green, Rocanville, Sask.

- 2.1 number of bricks: 2
description: red face brick, no frog or identification marks
source: Farmers' Building, Rocanville, Sask.
building date: 1919
measures: $8\frac{1}{2} \times 4 \times 2\frac{1}{2}$ inches
donated: June 24, 1999

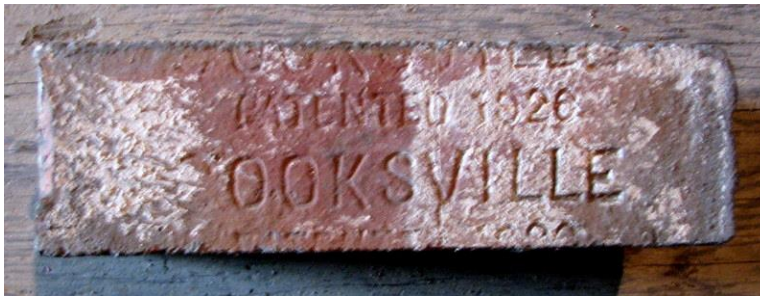


- 2.2 number of bricks: 2
description: yellow, and reddish yellow filler brick
source: Farmers' Building, Rocanville, Sask.
building date: 1919
measures: $8\frac{1}{4} \times 3\frac{7}{8} \times 2\frac{1}{4}$ inches
donated: June 24, 1999
- 2.3 number of bricks: 2
description: dark cream face brick with frog and inscription **WB**
source: unknown; from Rocanville Dump, Sask.
building date: unknown
measures: $8\frac{1}{8} \times 3\frac{7}{8} \times 2\frac{3}{8}$ inches
donated: June 24, 1999

The Saskatchewan Brick Register

3 Donor: Susan Birley, Regina, Sask.

- 3.1 number of bricks: 2
description: orange-red filler brick, with frog and inscription: **B & C** (from Redcliff Brick and Coal, Alberta)
source: Private Residence, 2208 Rae Street, Regina, Sask.
building date: ca. 1940
measures: 8 ½ x 3 ¾ x 2 ¼ inches
donated: June 17, 1999
- 3.2 number of bricks: 2
description: dark red face brick, used to line fireplace exterior, with inscription: **COOKSVILLE PATENTED 1926**; made in Cooksville (Mississauga) Ontario.
source: Private Residence, 2208 Rae Street, Regina, Sask.
building date: ca. 1940
measures: 8 ¼ x 3 ¾ x 2 ⅜ inches
donated: June 17, 1999



The Saskatchewan Brick Register

4. Donor: salvaged during demolition by Frank Korvemaker

- 4.1 number of bricks: 1
description: mottled brown hollow face brick, with long central hole
source: Co-Op Creameries, 2nd Ave NW & Caribou St, Moose Jaw, Sask.
building date: unknown
measures: 12 ½ x 4 x 4 inches
donated: June 8, 1999



- 4.2 number of bricks: 1
description: mottled reddish-brown hollow face brick, with three holes along the long side
source: Co-Op Creameries, 2nd Ave NW & Caribou St, Moose Jaw, Sask.
building date: unknown
measures: 12 ½ x 4 x 4 ¼ inches
donated: June 8, 1999
- 4.3 number of bricks: 1
description: mottled brown hollow face brick, with single hole, with square, tapered projecting knobs on two opposite sides
source: Co-Op Creameries, 2nd Ave NW & Caribou St, Moose Jaw, Sask.
building date: unknown
measures: 4 ⅛ x 4 ¾ x 3 ⅞ inches
donated: June 8, 1999
- 4.4 number of bricks: 2
description: mottled reddish-brown hollow face brick, with single hole, with square, tapered projecting knob on one side
source: Co-Op Creameries, 2nd Ave NW & Caribou St, Moose Jaw, Sask.
building date: unknown
measures: 4 ¼ x 4 x 4 ⅛ inches
donated: June 8, 1999

The Saskatchewan Brick Register

- 4.5 number of bricks: 2
description: dark red face bricks, no markings (used for exterior decorative purposes)
source: Co-Op Creameries, 2nd Ave NW & Caribou St, Moose Jaw, Sask.
building date: unknown
measures: $7\frac{3}{4}$ x $3\frac{3}{4}$ x $2\frac{1}{4}$ inches
donated: June 8, 1999



- 4.6 number of bricks: 1
description: Reddish-orange face bricks, without a frog on one side.
source: A commercial building being demolished in Prince Albert, about #15 – 10 Street West
building date: unknown
measures: $7\frac{5}{8}$ x $3\frac{7}{8}$ x $2\frac{1}{4}$ inches
donated: 18 July 2000



- 4.7 number of bricks: 1
description: Red face brick, with a shallow frog on one side.
source: Commercial building being demolished in Prince Albert, about #15 – 10 Street West
building date: unknown
measures: $8\frac{1}{16}$ x $3\frac{3}{4}$ x $2\frac{1}{2}$ inches
donated: 18 July 2000

The Saskatchewan Brick Register

- 4.8 number of bricks: 1
description: Red face bricks, with 10 round holes – two smaller in the centre, flanked by 4 larger holes on the left and right.
source: Motherwell Building, Regina, Sask.
manufacturer: unknown
SW corner Rose St. and Victoria Avenue
building date: ca. 1955
measures: 8 1/16 x 3 15/16 x 2 1/2 inches
donated: 16 May 2001



The Saskatchewan Brick Register

5. Donor: Ian Brace, Regina, Sask.

- 5.1 number of bricks: 1
 description: dark red face brick, with rough texture on three sides
 source: unknown, from Brace yard (previous owners?)
 building date: unknown
 measures: 8 ¼ x 4 x 2 ½ inches
 donated: Aug. 21, 1999
- 5.2 number of bricks: 1
 description: medium red face brick, with chipped off rough texture on part of one side
 (partial brick), and **I-XL** imprinted on one side
 source: unknown, from yard (previous owners?)
 building date: unknown
 measures: 8 (+ missing section) x 3 ½ (+ missing rough texture) x 1 ½ inches
 donated: Aug. 21, 1999
- 5.3 number of bricks: 1
 description: medium red face brick, with an oval-shaped frog (no text) 5 ½ inches long
 x 2 inches wide and ½ inch deep, and 4 screw marks inside the frog base
 source: unknown, from yard (previous owners?)
 building date: unknown
 measures: 8 ¼ x 3 ¾ x 2 ½ inches
 donated: Aug. 21, 1999

The Saskatchewan Brick Register

6. Donor: Jeannette & Gary Dixon, Weyburn, Sask.

- 6.1 number of bricks: 1
description: dark red face brick, with rectangular frog 6 ⅛ inch long x 1 ¾ inch wide and ⅜ inch deep and 2 screw marks in frog; also 12 dimples on back and 4 screw marks
source: unknown, from Dixon yard (previous owners?)
building date: unknown
measures: 8 x 3 ¾ x 2 ⅛ inches
donated: Aug. 6, 1999
- 6.2 number of bricks: 1
description: dark smooth red face brick, with a deep rectangular frog and **PREMIER** inscribed deeply inside the frog
source: unknown, from Dixon yard (previous owners?)
building date: unknown
measures: 8 ⅛ x 3 ¾ x 2 ¼ inches / 205 x 93 x 56 mm
weight: 4 lb, 13 oz / 2.18 kg
donated: 23 Aug. 2015



The Saskatchewan Brick Register

- 6.3 number of bricks: 1
description: dark smooth red face brick, with a deep rectangular frog and **REDCLIFF BRICK & COAL CO** inscribed inside the frog; also, two screw-head marks
source: unknown, from Dixon yard (previous owners?)
Manufacturer: Redcliff Brick and Coal Company, Redcliff, Alberta, began operations in 1907 and produced bricks for over 70 years under various names
building date: unknown
measures: $8\frac{1}{4}$ x $3\frac{3}{4}$ x $2\frac{3}{8}$ inches / 208 x 94 x 59 mm
weight: 5 lb / 2.21 kg
donated: 23 Aug. 2015



- 6.4 number of bricks: 1
description: orangey-red fire brick, with the raised letters **H. B. W.** on the top
source: from Mental Hospital site, Weyburn, Sask.
Manufacturer: Hartley Brothers, Outwood, Wakefield, England
building date: unknown
measures: $8\frac{3}{4}$ x $4\frac{1}{4}$ x $2\frac{3}{8}$ inches / 220 x 117 x 59 mm
weight: 5 lb, 8 oz / 2.5 kg
donated: 5 Aug. 2017



The Saskatchewan Brick Register

- 6.5 number of bricks: 1
description: pale yellow fire brick, with the letters **A.P. GREEN EMPIRE D.P.** impressed on the top; about 1 ½ inches of the right side is missing
source: from Mental Hospital site, Weyburn
Manufacturer: possibly the main A.P. Green plant in Mexico, Missouri, or the Brick Plant at Claybank, Sask.
building date: unknown
measures: 8 ¾ x 4 ½ x 2 ½ inches / 220 x 111 x 62 mm
weight: 7 lb, 9 oz / 3.42 kg
donated: 5 Aug. 2017



- 6.6 number of bricks: 1
description: pale yellow fire brick, with the letters **DEFCO** impressed into a slightly depressed elliptical frog
source: from Mental Hospital site, Weyburn
Manufacturer: probably Dominion Fire Brick and Clay Products Ltd., Claybank, Sask., which produced DEFCO products at least since 1916
building date: unknown
measures: 9 x 4 ½ x 2 ½ inches / 229 x 111 x 62 mm
weight: 6 lb, 12 oz / 3.1 kg
donated: 5 Aug. 2017



The Saskatchewan Brick Register

6.7	number of bricks:	1
	description:	pale yellow face brick, with the letters CANADA CANADA 35 7 impressed into the back of the brick; with an irregular surface on the face, corrugations on the back and four holes through the centre
	source:	from Mental Hospital site, Weyburn
	Manufacturer:	possibly Estevan Brick Company; similar to bricks 21.34, 21.44, 21.45
	building date:	unknown
	measures:	9 ½ x 2 ¾ x 3 1/16 inches / 240 x 68 x 78 mm
	weight:	4 lb, 8 oz / 2.04 kg
	donated:	5 Aug. 2017



Back



Top



Face

The Saskatchewan Brick Register

- 6.8 number of bricks: 1
description: dark red face brick, with the letters **B & C** impressed into a fairly deep frog, and the marks of the screw plate evident on both sides of the “&”. Marks of the ca. of drying bricks impressed into the back
source: from Mental Hospital site, Weyburn
Manufacturer: Redcliff Brick and Coal Company, Redcliff, Alberta, began operations in 1907 and produced bricks for over 70 years under various names
building date: unknown
measures: 8 ¼ x 3 ¾ x 2 ½ inches / 208 x 94 x 63 mm
weight: 5 lb, 3 oz / 2.35 kg
donated: 5 Aug. 2017



- 6.9 number of bricks: 1
description: beige fire brick, with the letters **WYNN** imprinted into the top
source: from Mental Hospital site, Weyburn
Manufacturer: WYNN & STARR Brick Company (est. 1910), Trafford, Penn, USA)
building date: unknown
measures: 9 x 4 ¼ x 2 ¾ inches / 228 x 110 x 61 mm
weight: 7 lb, 13 oz / 3.55 kg
donated: 27 Aug. 2017



The Saskatchewan Brick Register

- 6.10 number of bricks: 1
description: beige fire brick, with the following inscription imprinted on the top:
A.P. GREEN OZARK D.P. The “D.P.” refers to a dry press manufacturing process (as opposed to “S.M”, which means “Stiff Mud” process).
source: from Mental Hospital site, Weyburn
Manufacturer: A. P. Green Refractories Company, production plant undetermined
building date: unknown
measures: 8 ⁷/₈ x 4 ¹/₂ x 2 ³/₈ inches / 26 x 113 x 61 mm
weight: 7 lb, 13 oz / 3.55 kg
donated: 27 Aug. 2017



- 6.11 number of bricks: 2 (a and b)
description: pale yellow face brick, with the letters **CANADA CANADA 18 93** impressed into the back of the brick; with an irregular surface on the face, corrugations on the back and three holes through the centre – one brick is slightly smaller than the other
source: Weyburn , Saskatchewan
Manufacturer: possibly Estevan Brick Company; similar to brick 6.7
building date: unknown
measures: a: 8 ³/₄ x 2 ³/₄ x 3 ¹/₂ inches / 220 x 68 x 90 mm
b: 9 x 2 ⁵/₈ x 3 ¹/₂ inches / 227 x 67 x 90 mm
weight: a: 5 lb, 9 oz / 2.55kg (includes mortar in the three holes)
b: 5 lb, 0 oz / 2.4kg
donated: 17 May 2020



Back – a



b

The Saskatchewan Brick Register



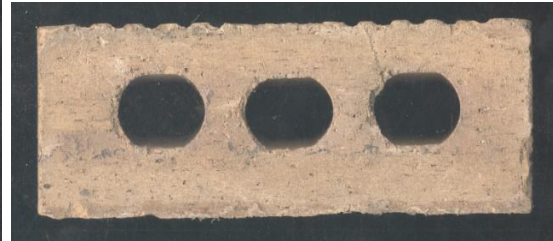
Front – a



b



Top – a



b

- 6.12 number of bricks: 1
description: fragment: dark red face brick, with a deep frog but no lettering
source: Lutheran Church, near Francis , Saskatchewan
Manufacturer: unknown
building date: unknown
measures: [6 ¼] x 2 ¼ x 4 inches / 2[165] x 60 x 100 mm
weight: 3 lb, 0 oz / 1.4 kg
donated: 20 August 2020



The Saskatchewan Brick Register

- 6.13 number of bricks: 1
 description: dark red face brick, with three holes
 source: CPR Round House, Weyburn, Saskatchewan
 Manufacturer: unknown
 building date: unknown
 measures: 8 x 2 ¼ x 3 ⅝ inches / 202 x 58 x 93 mm
 weight: 4 lb, 5 oz / 2.0 kg
 donated: summer 2022 – from demolition pile



- 6.14 number of bricks: 1
 description: beige filler brick, with no markings
 source: CPR Round House, Weyburn, Saskatchewan
 Manufacturer: unknown
 building date: unknown
 measures: 8 ⅜ x 2 ¼ x 3 ¾ inches / 211 x 56 x 97 mm
 weight: 4 lb, 8 oz / 2.2 kg
 donated: summer 2022 – from demolition pile



The Saskatchewan Brick Register

7. Donor: Royal Saskatchewan Museum, Regina, Sask.

7.1 number of bricks: 1
description: creamy orange fire brick with inscription **YOUNG'S GLENBOIG**; no frog
source: found in Royal Saskatchewan Museum storage
manufacturer: Young's, Glenboig, Scotland
building date: unknown
measures: 9 x 4 ½ x 2 ½ inches
donated: Aug. 1999



The Saskatchewan Brick Register

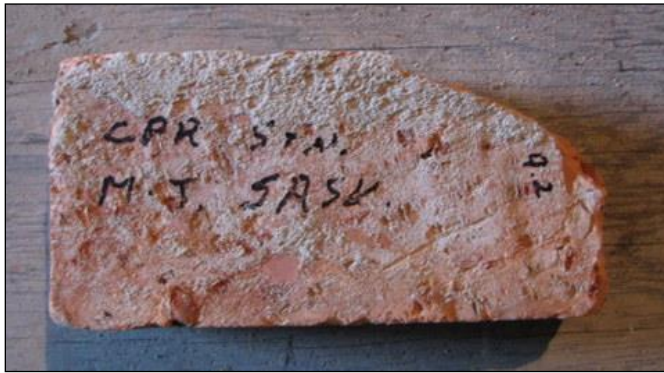
8. Donor: Garth Pugh, / Sask. Heritage Foundation, Regina, Sask.

8.1 number of bricks: 1
description: dark red filler brick (partial) with following inscription on the narrow side:
**RAINBOW, POSTON BRICK COMPANY, SPRINGFIELD and
POSTON PATENTED**
source: unknown, from yard on 14th Avenue, Regina
building date: unknown
measures: 6 (partial length) x 3 ¾ x 2 ¼ inches
donated: Aug. 10, 1999

The Saskatchewan Brick Register

9. Donor: Ray Olynek, Saskatoon, Saskatchewan

- 9.1 number of bricks: 2
description: dark red face brick with following inscription in the frog: **R P B Co.** (for Redcliff Pressed Brick Company, from Redcliff, Alberta)
source: CPR Station #3, Moose, Jaw, Saskatchewan
building date: 1920-22
measures: 8 ¼ x 4 x 2 ¼ inches
donated: Sept. 14, 1999
- 9.2 number of bricks: 2
description: orange-yellow filler brick with no inscriptions
source: CPR Station #3, Moose, Jaw, Saskatchewan
building date: 1920-22
measures: 8 ¼ x 3 ⅞ x 2 ¼ inches
donated: Sept. 14, 1999



- 9.3 number of bricks: 2
description: yellowish-grey, extruded face brick with a rough texture, and the inscription **TAPESTRY** stamped into the back of the brick at irregular locations. Also, the two extrude designs are “D” shaped.
source: CPR Station #3, Moose, Jaw, Saskatchewan
building date: 1920-22
measures: 8 ¼ x 3 ¾ x 2 ¼ inches
donated: Sept. 14, 1999



The Saskatchewan Brick Register

9.4 number of bricks: 2
 description: speckled beige fire brick, with the following inscription pressed into the
 face: **CANADA** – manufactured at the Claybank Brick Plant
 source: CPR Station #3, Moose, Jaw, Saskatchewan
 building date: 1920-22
 measures: 8 ³/₄ x 4 ¹/₄ x 1 ¹/₂ inches
 donated: Sept. 14, 1999

The Saskatchewan Brick Register

10. Donor: Town of Battleford, Battleford, Saskatchewan

10.1 number of bricks: 1
description: dark orange, hand-moulded face brick, with a shallow, irregularly shaped and located frog
source: Land Registry Office, Battleford, Saskatchewan
building date: 1877 – the first known brick building in Saskatchewan
measures: 8 ¼ x 3 ¾ x 2 inches
donated: Sept. 1, 1999



The Saskatchewan Brick Register

11. Donor: Francine Kenzle, Regina, Saskatchewan

- 11.1 number of bricks: 1
description: dark red face brick with a frog containing the following inscription: **I-XL**
source: Unknown, from Prince Albert, Saskatchewan
building date: Unknown
measures: $8 \frac{1}{8} \times 3 \frac{3}{4} \times 2 \frac{1}{4}$ inches
donated: Sept. 28, 1999
- 11.2 number of bricks: 1
description: orange face brick with a frog containing the following inscription:
ROSTHERN
source: Mann Building, Prince Albert, Saskatchewan
building date: 1928
measures: $8 \frac{3}{8} \times 4 \times 2 \frac{3}{8}$ inches
donated: Sept. 28, 1999
- 11.3 number of bricks: 1
description: orange-yellow filler brick, with no frog or inscription
source: Mann Building, Prince Albert, Saskatchewan
building date: 1928
measures: $8 \frac{1}{4} \times 3 \frac{3}{4} \times 2 \frac{3}{16}$ inches
donated: Sept. 28, 1999

The Saskatchewan Brick Register

12. Donor: Garth Pugh, Regina, Saskatchewan

- 12.1 number of bricks: 2
description: dark red face brick with a frog containing the following inscription:
CLAYBURN MADE IN CANADA
source: Unknown, found in basement of Pugh Residence, Regina, Sask.
building date: Unknown
measures: 8 ¼ x 4 x 2 ½ inches
donated: Nov. 29, 1999
- 12.2 number of bricks: 1
description: beige face brick with a deep frog containing the following, well-crafted inscription: **H S**
source: Farmyard near Baring, Sask.
manufacturer: Henry Stephens Brick Company, Portage la Prairie, Manitoba
building date: Unknown
measures: 8 ⅜ x 3 ⅞ x 2 ⅜ inches / 213 x 98 x 59 mm
donated: August 18, 2017



The Saskatchewan Brick Register

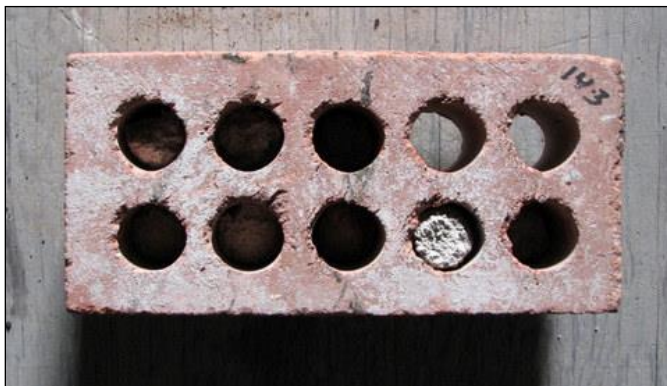
13. Donor: Maureen Harrison, Regina, Saskatchewan

13.1 number of bricks: 1
description: beige / orange fire brick with the following inscription: **CLAYBANK**
source: Unknown; found in a residential garage in Regina, Saskatchewan
building date: Unknown
measures: 8 $\frac{7}{8}$ x 4 $\frac{1}{2}$ x 1 $\frac{7}{8}$ inches
donated: March 8, 2000

The Saskatchewan Brick Register

14. Donor: Paragon Industries Ltd., Winnipeg, Manitoba,

- 14.1 number of bricks: 2
description: medium to dark red face brick with vertical-lined rough texture on three sides, flat corners; no inscriptions; vertical markings on the back face
source: Broder Building (Medical Dental Building) 1801 Rose Street, Regina, Saskatchewan
building date: 1929
measures: $8 \frac{1}{4} \times 4 \times 2 \frac{1}{2}$ inches
donated: March 29, 2000
- 14.2 number of bricks: 1
description: medium red face brick with vertical-lined rough texture on three sides, and the numbers "85" and parts of the words **MEDICINE HAT BRICK & TILE COMPANY** inscribed in the back, as well as vertical lines; and 10 round $\frac{7}{8}$ inch holes through the brick.
source: Broder Building (Medical Dental Building) 1801 Rose Street, Regina, Saskatchewan
building date: 1929 (addition)
measures: $8 \frac{1}{8} \times 3 \frac{5}{8} \times 2 \frac{1}{4}$ inches
donated: March 29, 2000
- 14.3 number of bricks: 1
description: medium red face brick with horizontal-lined rough texture on three sides, and the numbers "C 38" and parts of the words **MEDICINE HAT BRICK & TILE COMPANY** inscribed in the back, as well as vertical lines on the back; and 10 round $\frac{15}{16}$ inch holes through the brick.
source: Broder Building (Medical Dental Building) 1801 Rose Street, Regina, Saskatchewan
building date: 1929 (addition)
measures: $8 \frac{1}{8} \times 3 \frac{3}{4} \times 2 \frac{1}{4}$ inches
donated: March 29, 2000



The Saskatchewan Brick Register

- 14.4 number of bricks: 1
description: medium red smooth face brick with vertical lines on the back; and 10 round $\frac{7}{8}$ inch holes through the brick.
source: Broder Building (Medical Dental Building) 1801 Rose Street, Regina, Saskatchewan
building date: 1929 (addition)
measures: 8 x 3 $\frac{1}{2}$ x 2 $\frac{1}{4}$ inches
donated: March 29, 2000
- 14.5 number of bricks: 1
description: medium red smooth face brick with 3 round 1 $\frac{1}{2}$ inch holes through the brick; and inscription: **CANADA 1 X L**
source: Broder Building (Medical Dental Building) 1801 Rose Street, Regina, Saskatchewan
building date: 1929 (addition)
measures: 7 $\frac{3}{4}$ x 3 $\frac{1}{2}$ x 2 $\frac{1}{4}$ inches
donated: March 29, 2000



The Saskatchewan Brick Register

15. Donor: Hotel Saskatchewan, Regina, Sask.

- 15.1 number of bricks: 2
description: buff face brick, with vertical lines on three sides, and three round holes with a 1 inch diameter; inscription in base reads **SASK CLAY PRODUCTS ESTEVAN**, and below that **CANADA**.
source: Hotel Saskatchewan, Victoria Avenue, Regina, Sask.
building date: post 1927 (addition)
measures: 7 15/16 x 3 11/16 x 2 1/8 inches
donated: March, 2000



- 15.2 number of bricks: 2
description: buff / orange filler brick, with inscription in base: diamond with **ICP** inside, and **ESTEVAN** above and **CANADA** below.
source: Hotel Saskatchewan, Victoria Avenue, Regina, Sask.
building date: 1927 (addition)
measures: 8 1/4 x 3 7/8 x 2 1/8 inches
donated: March, 2000



The Saskatchewan Brick Register

- 15.3 number of bricks: 4
 description: buff face brick, with horizontal scratched surface on three sides, and inscription in base which reads **PAT 9-21-20**.
 source: Hotel Saskatchewan, Victoria Avenue, Regina, Sask.
 building date: 1927
 measures: 8 $\frac{1}{8}$ x 3 $\frac{7}{8}$ x 2 $\frac{3}{16}$ inches
 donated: March, 2000



- 15.4 number of bricks: 2
 description: fragments from two buff face brick, with horizontal scratched surface on three sides, and three elliptical holes measuring $\frac{1}{2}$ x $\frac{3}{4}$ inch .
 source: Hotel Saskatchewan, Victoria Avenue, Regina, Sask.
 building date: 1927
 measures: 8 x 3 $\frac{7}{8}$ x 2 $\frac{1}{8}$ inches
 donated: March, 2000

The Saskatchewan Brick Register

16. Donor: Heritage Village, Weyburn, Sask.

16.1 number of bricks: 1
description: red face brick, with three circular holes, and two indented mini-frogs at the two outer holes. No inscription.
source: unknown - brick found on museum grounds.
building date: n/a
measures: 8 x 3 ⁵/₈ x 2 ¹/₄ inches
donated: May 8, 2001

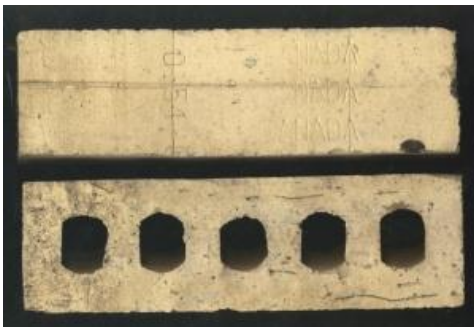
The Saskatchewan Brick Register

17. Donor: Unknown

- 17.1 number of bricks: 2
description: orangey-buff filler brick, with no inscriptions
source: CNR Pump House, Tilney, Sask.
building date: ca. 1922-23
measures: 8 x 3 $\frac{5}{8}$ x 2 $\frac{1}{8}$ inches
donated: March 13, 2001
- 17.2 number of bricks: 1
description: creamy-buff, with “**A S Co**” in the frog.
source: Co-Op Creamery, Regina, Sask.
Manufacturer: Andrew Snyder and Company, Portage la Prairie, Manitoba
building date: unknown
measures: 8 $\frac{1}{2}$ x 3 $\frac{3}{4}$ x 2 $\frac{1}{4}$ inches
donated: June 9, 2003

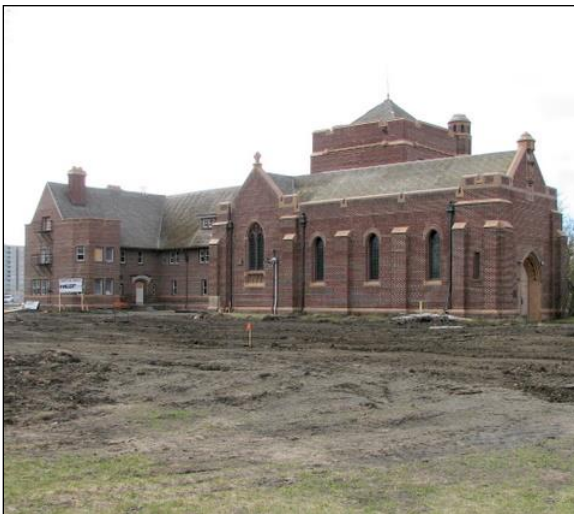
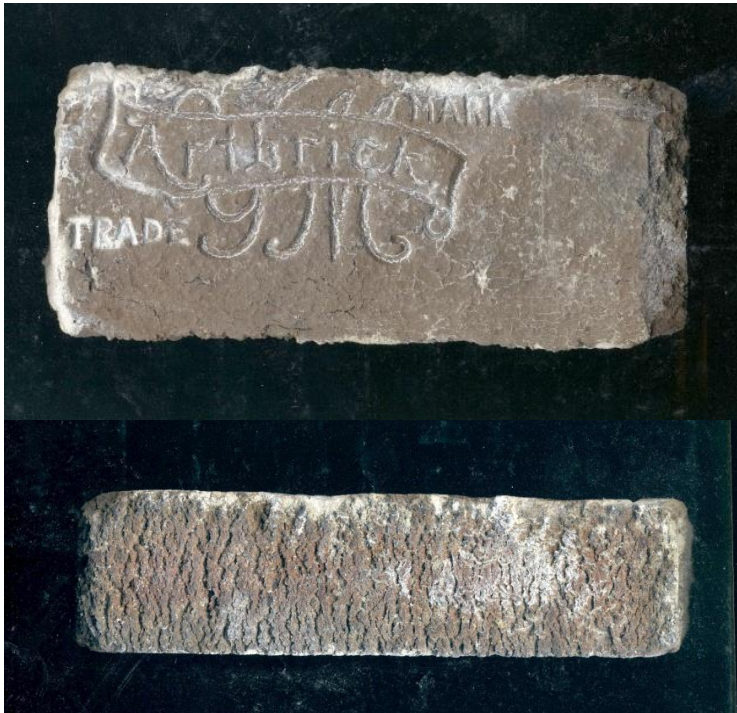


- 17.3 number of bricks: 5
description: creamy-buff, “**CANADA**” and a 4 digit number pressed into the back, with 5 holes, rough on 3 sides, smooth on back
source: unknown, bought at a Garage Sale (made by I-XL), called METRO brick.
building date: unknown
measures: 9 $\frac{3}{4}$ x 2 $\frac{3}{4}$ x 3 $\frac{1}{8}$ inches
weight: 5 lbs / 2.23 kg
donated: April 2006



The Saskatchewan Brick Register

17.4	number of bricks	2
	description	brown and reddish-brown brick with rough texture and inscription: “ Trade Mark ARTBRICK YM ” – made by Yinling Martin Brick Co., Johnsonburg, Pennsylvania.
	source:	St. Chad’s College, Regina, Sask.
	building date:	1913-14
	measures:	8 ¼ x 3 ⅝ x 2 ¼ inches
	weight:	5 lbs / 2.3 kg
	donated:	Summer 2006



St. Chad’s - 2009

The Saskatchewan Brick Register

18. Donor: Lois Baillie, Moose Jaw, Sask.

18.1 number of bricks: 2
description: orange filler brick with a deep frog containing the letters: **W. W. M. J.** —
for Wellington White, Moose Jaw.
source: Russell Block, Moose Jaw, Sask.
building date: ca. 1910
measures: 8 ¼ x 4 x 2 ¼ inches
donated: June 4, 2001



The Saskatchewan Brick Register

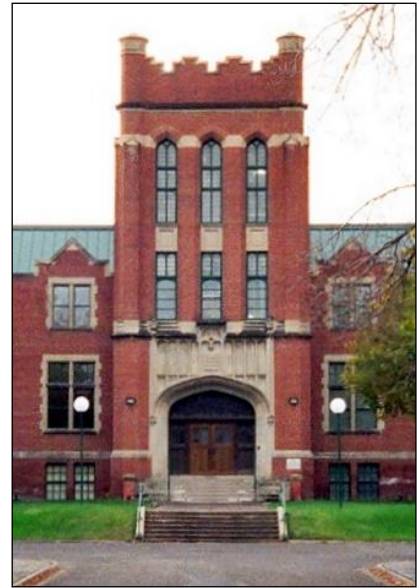
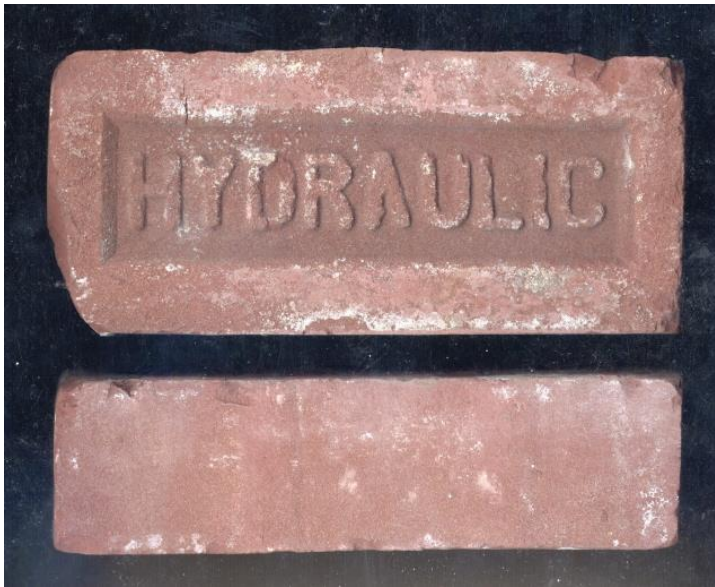
19. Donor: Les Oystryk, Creighton, Sask.

19.1 number of bricks: 3 - broken (total 5 pieces – marked 19.1a-e)
description: buff coloured fire brick containing the letters: “**CLAYBANK**.”
source: Hudson Bay Mining & Smelting Company, Flin Flon, Manitoba
building date: undetermined – may be the ROASTER brick referred to
in the McColeman Diary (1938-42)
measures: $8 \frac{3}{4}$ x $4 \frac{1}{4}$ x $2 \frac{3}{8}$ inches
donated: October 6, 2001

The Saskatchewan Brick Register

20. Donor: Dominion Construction Ltd., Regina, Sask.

- 20.1 number of bricks: 2
description: dark red face brick with the word “**HYDRAULIC**” in the frog.
source: Normal School, SW corner of College Ave & Broad Street, Regina, Saskatchewan
building date: 1913-14
measures: $7 \frac{7}{8}$ x $3 \frac{5}{8}$ x $2 \frac{1}{4}$ inches; 202 x 93 x 60 mm
weight: 4 lbs, 2 oz / 1.85 kg
donated: August 15, 2001



- 20.2 number of bricks: 1
description: cream coloured filler brick, with a concave frog the full length of the brick; no inscription
source: Normal School, SW corner of College Ave & Broad St., Regina, Sask.
building date: 1913-14
measures: 8 x $3 \frac{3}{4}$ x $2 \frac{1}{4}$ inches
donated: August 15, 2001
- 20.3 number of bricks: 1
description: dark red face brick with no text or frog – dark stains on front face and back from the firing process; and horizontal marks about 2 inches apart on the top
source: Normal School, SW corner of College Ave & Broad Street, Regina, Saskatchewan
building date: 1913-14
measures: $7 \frac{7}{8}$ x $3 \frac{3}{4}$ x $2 \frac{1}{4}$ inches; 202 x 93 x 60 mm
weight: 5 lbs, 4 oz / 2.4 kg
donated: August 15, 2001

The Saskatchewan Brick Register



- face



- top



- back

The Saskatchewan Brick Register

21. Donor: Frank Korvemaker, Regina, Saskatchewan

- 21.1 number of bricks: 1
description: cream coloured fire brick with the inscription
“**CR & FB CO**” on one line, and “**AJAX**” below this. (Chicago Retort and Fire Brick Company, Ajax: 1904-1942). No frog.
source: Benson School, Regina, Saskatchewan
building date: Unknown
measures: 9 x 4 ¼ x 2 ⅜ inches
donated: August 15, 2001



- 21.2 number of bricks: 2
description: reddish brown, with a back inscription “**Poston Patented Process**”, “**Rainstruck**”, “**Poston Brick Company, Springfield, Illinois**” No frog.
source: Private Residence, NE corner of Cornwall and 14th Avenue, Regina, Sk.
building date: Unknown (brick possibly patented in 1927)
measures: 8 x 4 ¾ x 2 ¼ inches / 202 x 107 x 56 mm
donated: September 16, 2002 (recovered during demolition)



The Saskatchewan Brick Register

- 21.3 number of bricks: 1
description pale yellow coloured face brick, coarse surface, without any inscription in the frog. Manufactured at the Brick Plant operated by John J. Smith, Yorkton.
source: Smith Flour Mill, Yorkton, Saskatchewan
building date: 1899-1900
size: 8 x 3 $\frac{5}{8}$ x 2 $\frac{3}{8}$ inches / 202 x 91 x 60 mm
weight: 3 lb, 3 oz / 1.45 kg
donated: June 12, 2005 – recovered from site



- 21.4 number of bricks: 2
description orangey-yellow coarse face brick, with **ALSIP** inscribed in the frog. Manufactured by the Alsip Brick and Tile Company, Winnipeg, Manitoba between 1895 and 1959.
source: found in Korvemaker yard, 59 Compton Rd., Regina
building date: Unknown
measures: 8 x 3 $\frac{3}{4}$ x 2 $\frac{1}{8}$ inches / 201 x 94 x 55 mm
weight: 3 lb, 8 oz / 1.6 kg
donated: January 2006



The Saskatchewan Brick Register

- 21.5 number of bricks: 4 (see 21.9 for detail on brick 21.5.b and 21.5.c)
description: pale yellow coloured face brick, course surface, with **HS** inscribed in the frog..
Manufacturer: Henry Stephens at Portage la Prairie, Manitoba between c1892 and c1908)
source: found in Korvemaker yard, 59 Compton Rd., Regina, Sask.
building date: Unknown
measures: 8 ¼ x 4 x 2 ¼ inches
weight: 3 lb, 12 oz / 1.7 kg
donated: January 2006



- 21.6 number of bricks: 1
description: dark red face brick, semi-course surface, with **PREMIER** inscribed in a deep frog.
Manufacturer: Redcliff Brick and Coal Company, Redcliff, Alberta
source: St. Regis Hotel, 11th Avenue, Regina, Sask.
building date: ca. 1910
measures: 7 ⅝ x 3 ½ x 2 ¼ inches
weight: 3 lb, 7 oz / 2 kg
donated: February 2006 during demolition



The Saskatchewan Brick Register

- 21.7 number of bricks: 1
description orangey-red face brick, smooth surface, with **REDCLIFF BRICK & COAL CO** embossed in a semi-deep frog.
Manufacturer: Redcliff Brick and Coal Company, Redcliff, Alberta
source: St. Regis Hotel, 11th Avenue, Regina
building date: ca. 1910
measures: 8 x 3 ⁷/₈ x 2 ¹/₄ inches
weight: 5 lb / 2.3 kg
donated: February 2006 during demolition



- 21.8 number of bricks: 1
description orangey-red bullnose face brick, smooth surface, with **REDCLIFF BRICK & COAL CO** embossed in a semi-deep frog.
Manufacturer: Redcliff Brick and Coal Company, Redcliff, Alberta
source: St. Regis Hotel, 11th Avenue, Regina
building date: ca. 1910
measures: 8 x 3 ⁷/₈ x 2 ¹/₄ inches
weight: 4 lb, 14 oz / 2.2 kg
donated: February 2006 during demolition



The Saskatchewan Brick Register

- 21.9 number of bricks: 3
description buff (cream) coloured face brick, semi-smooth surface, with **MS CO** embossed in a deep frog.
Manufacturer: M. Snyder & Company, Portage la Prairie, Manitoba
source: Duncan Residence, 13th Ave & Scarth Street, Regina, Sask.
building date: ca. 1906
measures: 8 ½ x 4 x 2 ¾ inches
weight: 4 lb, 1 oz / 1.85 kg
donated: Summer 2006 during demolition



- 21.10 number of bricks: 3
description buff (cream) coloured face brick, semi-smooth surface, with Roman Numerals **"I"**, **"III"** and **"V"** embossed in a deep frog.
source: Unknown – bought at ReStore brick recycle pile, Regina, Sask.
building date: Unknown
measures: 8 ⅛ x 4 ¾ x 2 ¼ inches
weight: 3 lb, 10 oz / 1.65 kg
donated: Sept. 25, 2006



The Saskatchewan Brick Register

- 21.11 number of bricks: 1
description buff (cream) coloured face brick, semi-smooth surface, with a medium deep frog, no inscription.; hand-moulded
source: Unknown
building date: Unknown
measures: 8 x 3 ½ x 2 ¼ inches
weight: 3 lb, 10 oz / 1.65 kg
donated: Summer 2006



- 21.12 number of bricks: 2
description orangey-red coloured face brick, semi-smooth surface, with the letters **A D** inscribed in a deep frog; hand-moulded
source: found in Korvemaker yard, 59 Compton Road, Regina
building date: 1907-1919
brick manufacturer: Andrew Dykeman, Lavenham, Manitoba
measures: 8 x 3 ¾ x 3 ¾ inches;
weight: 3 lb, 10 oz / 1.65 kg
donated: Feb. 2009

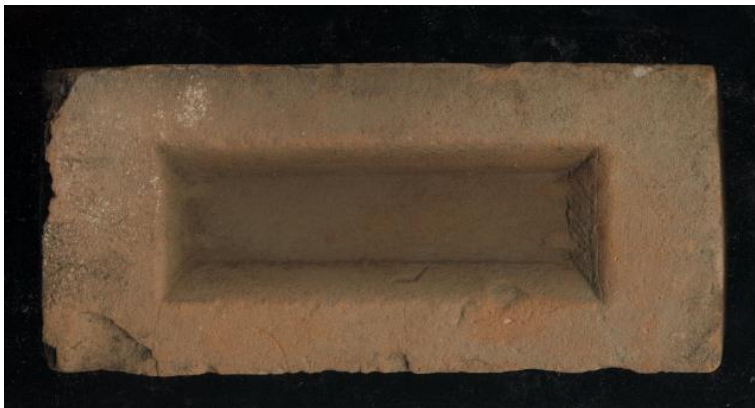


The Saskatchewan Brick Register

- 21.13 number of bricks: 1
description: red coloured face brick, smooth surface, with **REDCLIFF BRICK & COAL CO** inscribed in a shallow frog
manufacturer: Redcliff Brick and Coal Company, Redcliff, Alberta
source: Unknown, found in yard in Edmonton, Alberta, May 2008
building date: Unknown
measures: $8 \frac{3}{8}$ x $3 \frac{7}{8}$ x $2 \frac{1}{2}$ inches;
donated: Feb. 2009



- 21.14 number of bricks: 1
description: orangey-red coloured face brick, smooth surface, with double points at both ends of a deep frog; no manufacturer marks
source: found in Korvemaker yard, 59 Compton Road, Regina, Sask.
building date: Unknown
measures: $8 \frac{3}{8}$ x $3 \frac{7}{8}$ x $2 \frac{3}{8}$ inches;
donated: Feb. 2009



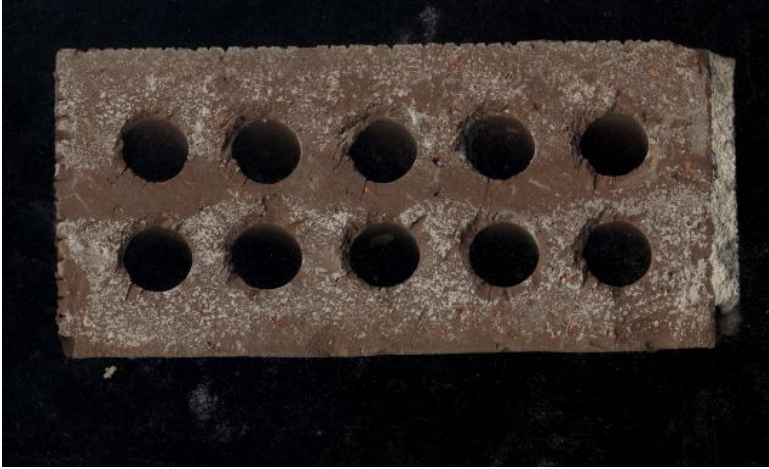
The Saskatchewan Brick Register

- | | | |
|-------|-------------------|---|
| 21.15 | number of bricks: | 1 |
| | description | buff, cream coloured face brick, semi-smooth surface, with “ A S Co ” inscribed in a ½ inch deep frog. |
| | manufacturer: | Andrew Snyder & Co., Portage la Prairie, Manitoba; |
| | source: | found in Korvemaker yard, 59 Compton Road, Regina, Sask. |
| | building date: | Unknown |
| | donated: | August 2008 |
| | | |
| 21.16 | number of bricks: | 1 |
| | description | dark red coloured face brick, smooth surface, with REDCLIFF inscribed in a shallow frog; this consists of two bricks fused together at the face. |
| | manufacturer: | Redcliff Pressed Brick Company, Redcliff, Alberta. |
| | source: | Maple Leaf Hostel, Diocese of Qu’Appelle, College & Broad St., Regina, Sask. |
| | building date: | 1925 |
| | donated: | 28 June 2009 |



The Saskatchewan Brick Register

- 21.17 number of bricks: 1
description brown coloured face brick, smooth surface, with **MADE IN CANADA** stamped into the back. This is an I-XL brick, made in Medicine Hat, Alberta. 10 holes; rough texture face
source: Gymnasium, Diocese of Qu'Appelle, College St., Regina Sask.
building date: ca. 1960



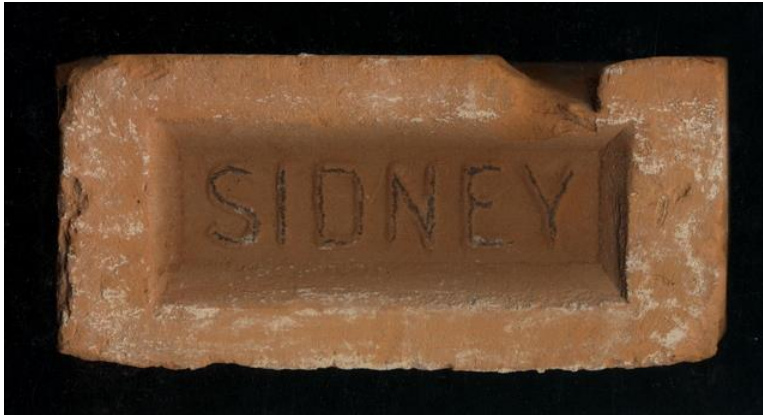
Face



Back

The Saskatchewan Brick Register

- 21.18 number of bricks: 1
description: Orangey face brick, rough surface, with **SIDNEY** stamped into the back.
source: Leader Building, Regina, Sask.
building date: brick manufactured from: 1909 – 1927 by the Sidney Brick & Tile Company or Sidney Brick and Clay Works Ltd., Sidney, Manitoba
measures: $8\frac{3}{8}$ x $3\frac{7}{8}$ x $2\frac{1}{4}$ inches / 212 x 98 x 56 mm\
weight: 3 lb, 13 oz / 1.72 kg
donated: August 1, 2008



- 21.19 number of bricks: 1
description: Orangey brown face brick, smooth surface, with no frog or inscription
source: Rounding House, 2639 McCallum Ave., Regina, Sask.
building date: 1913
measures: $8\frac{3}{8}$ x $3\frac{7}{8}$ x $2\frac{1}{2}$ inches / 214 x 100 x 61 mm
weight: 5 lb, 7 oz / 2.45 kg
donated: 18 Sept. 2009



The Saskatchewan Brick Register

- 21.20 number of bricks: 1
description: dark red, engineering brick, smooth surface, with shallow frog and inscription: **Cattybrook Brick Co. Limited BRISTOL**
source: window surround on Immaculate Conception Roman Catholic Church, Harbour Grace, Newfoundland.
building date: 1890
measures: $8 \frac{7}{8}$ x $4 \frac{3}{8}$ x 3 inches / 224 x 110 x 75 mm
weight: 9 lb, 14 oz / 4.44 kg
donated: 7 Nov 2013



- 21.21 number of bricks: 1
description: beige, face brick, smooth surface, with shallow frog and inscription: **MILTON**
source: Lens Mills (originally RE. Forbes Co. Woolen Mills) , Cambridge, Ontario.
building date: ca. 1907
measures: $8 \frac{1}{2}$ x 4 x $2 \frac{3}{8}$ inches / 217 x 103 x 61 mm
weight: 5 lb, 7 oz / 2.42 kg
donated: 7 Nov 2013



The Saskatchewan Brick Register

- 21.22 number of bricks: 1
description: dark red, face brick, smooth surface, with shallow diamond-shaped frog and no inscription:
source: chimney on Sue & Rod Moores House, Port Maitland, Nova Scotia.(from Beaver River Brickyard, near Port Maitland)
building date: ca. 1875
measures: 8 1/8 x 3 5/8 x 2 1/4 inches / 205 x 93 x 55 mm
weight: 5 lb, 2 oz / 2.35 kg
donated: 7 Nov 2013



- 21.23 number of bricks: 1
description: dark beige, fire brick, smooth surface, with no frog but letters impressed:
W. W. CO.
source: from yard of Mary Alexander, Mackinaw, Michigan, 2013
manufacturer: Robinson Clay Products, Akron, Ohio.
building date: unknown / not applicable
measures: 8 5/8 x 4 1/4 x 2 1/2 inches / 220 x 108 x 63 mm
weight: 6 lb, 9 oz / 3 kg
donated: 7 Nov 2013



The Saskatchewan Brick Register

- 21.24 number of bricks: 1
description: dark beige, fire brick, smooth surface, with a shallow frog and the inscription in raised letters: **MBLB Co.**
source: from yard of Mary Alexander, Mackinaw, Michigan, 2013.
building date: unknown / not applicable
measures: 8 1/8 x 3 1/2 x 2 1/2 inches / 205 x 90 x 63 mm
weight: 4 lb, 1 oz / 1.82 kg
donated: 7 Nov 2013



- 21.25 number of bricks: 1
description: dark beige, engineering brick, smooth surface, with no frog and the following letters impressed: **MASSILLON S. & F. B. Co**
MASSILLON, OH
source: from yard of Mary Alexander, Mackinaw, Michigan, 2013.
building date: unknown / not applicable
measures: 8 3/4 x 3 1/2 x 4 inches / 220 x 90 x 102 mm
weight: 10 lb, 7 oz / 4.6 kg
donated: 7 Nov 2013



The Saskatchewan Brick Register

- 21.26 number of bricks: 1
description: beige, fire brick, smooth surface, with no frog and the following letters impressed: **A.P. GREEN EMPIRE D. P.**
source: unknown; found next to Provincial Lab at 3211 Albert Street, Regina, Sask. during demolition
building date: 1955
measures: 9 x 4 ½ x 2 ¾ inches / 230 x 112 x 62 mm
weight: 7 lb, 14 oz / 3.55 kg
donated: 7 Nov 2013

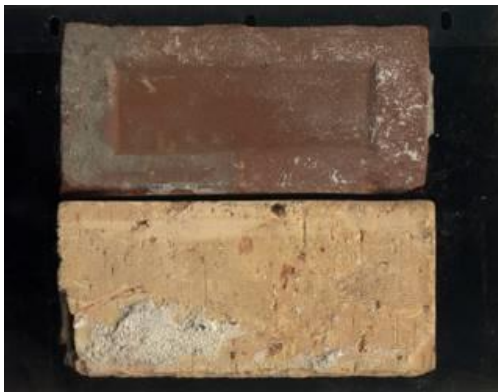


- 21.27 number of bricks: 2
description: orangey-beige, filler brick, smooth surface, with a deep frog and the following raised letters: **VIRDEN**
source: Crescent Apartments, by General Hospital, Regina, Sask. during demolition
building date: 1910
measures: 9 x 4 ½ x 2 ¾ inches / 230 x 112 x 62 mm
weight: 3 lb, 10 oz / 1.7 kg
donated: 7 Nov. 2013



The Saskatchewan Brick Register

- 21.28 number of bricks: 2 (a and b)
description: one beige, filler brick, smooth surface, with no frog or inscription; one dark red face brick with a shallow frog and no inscription
source: Crescent Apartments, by General Hospital, Regina, Sask. during demolition
building date: 1910
measures: (a) dark red: $7 \frac{7}{8} \times 3 \frac{1}{2} \times 2 \frac{1}{4}$ inches / 200 x 90 x 60 mm
(b) beige: $8 \frac{1}{8} \times 3 \frac{7}{8} \times 2 \frac{1}{8}$ inches / 205 x 97 x 57 mm
weight: (a) dark red: 4 lb, 4 oz / 1.9 kg
(b) beige: 4 lb / 1.8 kg
donated: 7 Nov 2013

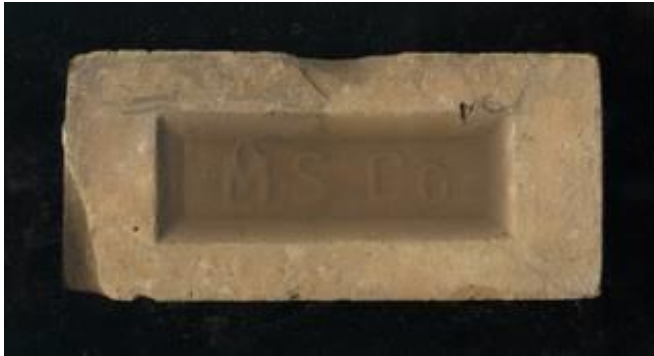


- 21.29 number of bricks: 3
description: beige, filler brick, smooth surface, with a deep frog and the following raised letters: **B. B. Co** (Made by the Balmoral Brick Company, Balmoral, Manitoba)
source: found in yard at 1174 Argyle Street, Regina, Sask. during landscape renovations
building date: unknown
measures: $8 \frac{3}{8} \times 3 \frac{3}{4} \times 2 \frac{1}{4}$ inches / 215 x 95 x 57 mm
weight: 3 lb, 7 oz / 1.42 kg
donated: 7 Nov 2013



The Saskatchewan Brick Register

- 21.30 number of bricks: 1
description beige, filler brick, smooth surface, with a deep frog and the following raised letters: **MS Co.** (possibly the M has been changed to an A)
source: unknown; brick made by M. Snyder & Co., Manitoba
building date: unknown
measures: $8\frac{3}{8}$ x $3\frac{7}{8}$ x $2\frac{3}{8}$ inches / 215 x 97 x 60 mm
weight: 4 lb, 1 oz / 1.85 kg
donated: 7 Nov 2013



- 21.31 number of bricks: 1
description orange filler brick, smooth surface, with a deep frog and the following raised letters: **SIDNEY**
source: unknown; brick made in Sidney, Manitoba, and includes a thick layer of mortar
building date: unknown
measures: $8\frac{3}{8}$ x $3\frac{7}{8}$ x $2\frac{3}{8}$ inches / 215 x 97 x 60 mm
weight: 4 lb, 1 oz / 1.85 kg
donated: 7 Nov 2013



The Saskatchewan Brick Register

- 21.32 number of bricks: 1
description: orange filler brick, corrugated "frog" on top and bottom; no inscription
source: St. Elizabeth Convent, Humboldt; possibly made at Bruno, Sask.
building date: unknown
measures: 8 x 4 x 2 $\frac{3}{8}$ inches / 203 x 102 x 60 mm
weight: 4 lb. 9 oz / 2.1 kg
donated: 7 Nov 2013

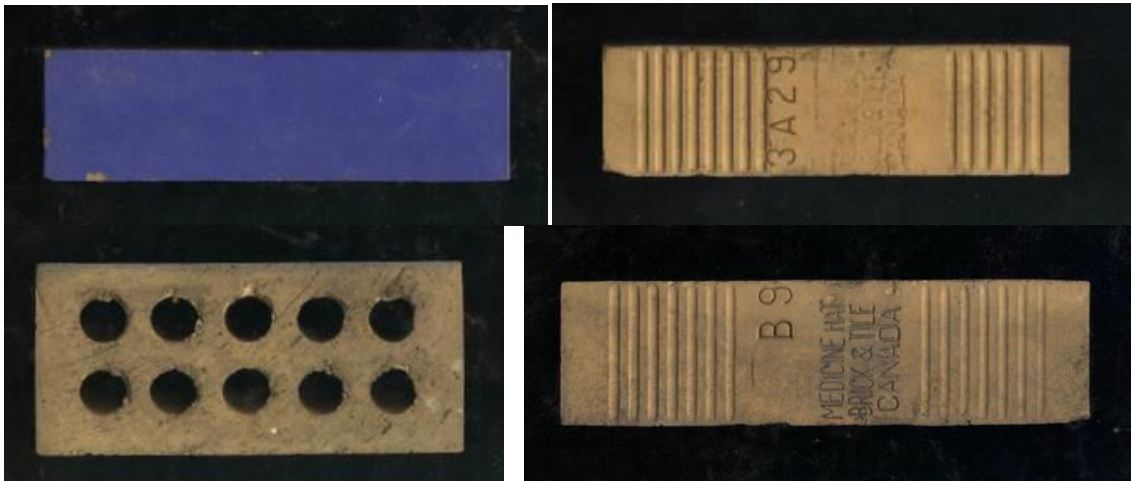


- 21.33 number of bricks: 2
description: orangey-red face brick, rough textured, with 10 holes instead of a frog; inscription on the back reads: **I-XL MEDICINE HAT BRICK & TILE CO LTD**
source: St. Elizabeth Hospital, Humboldt, Sask.
building date: 1955
measures: 8 $\frac{1}{8}$ x 3 $\frac{3}{4}$ x 2 $\frac{1}{4}$ inches / 210 x 95 x 57 mm
weight: 4 lb, 0 oz / 1.8 kg
donated: 7 Nov 2013



The Saskatchewan Brick Register

- 21.34 number of bricks: 2
description: beige face brick, with blue glaze, and 10 holes instead of a frog; inscription on the back reads: **3 A 2 9 MEDICINE HAT BRICK & TILE CANADA**; alternate numbering, and corrugated on back
Manufacturer: Medicine Hat Brick and Tile Company, Alberta.; similar to bricks # 21.47
source: found in Bouvier yard, Compton Road, Regina, Sask.
building date: Unknown
measures: 8 1/8 x 3 5/8 x 2 1/4 inches / 210 x 92 x 57 mm
weight: 4 lb, 0 oz / 1.8 kg
donated: 7 Nov 2013

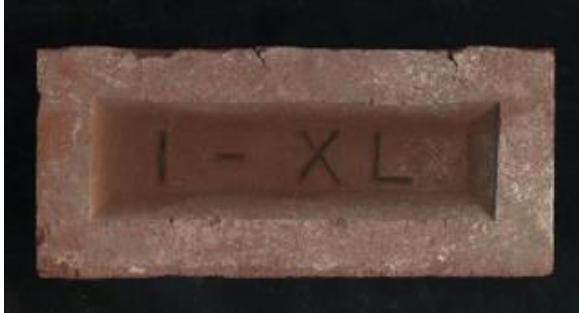


- 21.35 number of bricks: 3
Description: beige face brick, with a fairly deep frog; no inscription
source: Yorkton Flour Mill, Yorkton, Sask.
building date: ca. 1890
measures: 8 x 3 5/8 x 2 1/4 inches / 202 x 92 x 57 mm
weight: 3 lb, 14 oz / 1.75 kg
donated: 7 Nov 2013



The Saskatchewan Brick Register

- 21.36 number of bricks: 1
 Description: red face brick, with a fairly deep frog; inscription: **I-XL**
 source: Armoury, Indian Head, Sask.
 manufacturer: I-XL Industries / Medicine Hat Brick and Tile Company, Medicine Hat, Alberta
 building date: ca. 1914 – later addition
 measures: 8 x 3 ½ x 2 ¼ inches / 202 x 90 x 57 mm
 weight: 4 lb, 9 oz / 2.1 kg
 donated: 7 Nov 2013



- 21.37 number of bricks: 3
 Description: grey face brick, perhaps sand-lime, with a fairly deep frog; inscription: **W B**
 source: chimney at Jaroslaw Church site, near Yorkton, Sask. (2 bricks, one with mortar in frog); and Pump House, near Watrous
 manufacturer: Winnipeg Brick Company, Manitoba
 building date: unknown
 measures: 8 x 3 ½ x 2 ¼ inches / 202 x 90 x 57 mm
 weight: 4 lb, 8 oz / 2.05 kg
 donated: 7 Nov 2013



Yorkton



Watrous

The Saskatchewan Brick Register

- 21.38 number of bricks: 2
Description: orangey-beige face brick, with a fairly deep frog; inscription:
P. BUTTE
source: (1) Black Block, Regina, Sask. and (2) unknown
manufacturer: Pilot Butte Brick Company, Pilot Butte, Sask.
building date: ca. 1910
measures: (1) 8 x 4 x 2 ¼ inches / 202 x 100 x 57 mm
(2) 7 ⅞ x 3 ⅞ x 2 ⅛ inches / 200 x 98 x 55 mm
weight: (1) 4 lb, 4 oz / 1.9 kg
(2) 3 lb, 9 oz / 1.65 kg
donated: 7 Nov 2013



(1) Black Block



(2) Unknown

- 21.39 number of bricks: 1
Description: orangey-beige face brick, with a moderately deep frog; inscription:
PREMIER
source: found at 2219 Smith Street, Regina, Sask.
building date: unknown
measures: 8 ¼ x 3 ¾ x 2 ¼ inches / 210 x 95 x 57 mm
weight: 4 lb, 11 oz / 2.2 kg
donated: 7 Nov 2013



The Saskatchewan Brick Register

- 21.40 number of bricks: 1
Description: orangey-red face brick, with a shallow elliptical frog; inscription:
R C P Co
source: Armoury, Indian Head, Sask.
manufacturer: Redcliff Clay Products Company, Redcliff, Alberta
building date: ca. 1914 – original section
measures: 8 x 3 ½ x 2 ¼ inches / 202 x 90 x 57 mm
weight: 4 lb. 9 oz / 2.1 kg
donated: 7 Nov 2013

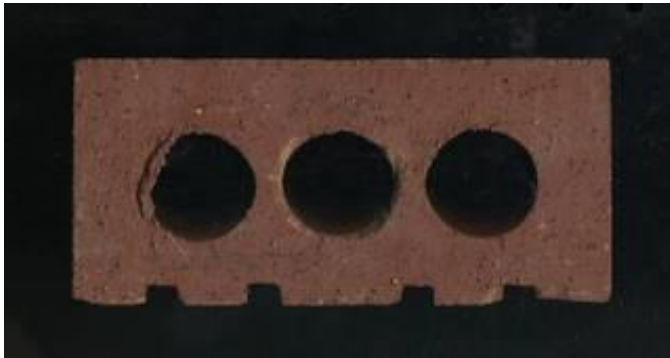


- 21.41 number of bricks: 1
Description: dark red face brick, with a shallow frog; inscription:
REDCLIFF BRICK & COAL CO; and screw marks in frog and on back
source: unknown –
manufacturer: Redcliff Brick and Coal Company, Redcliff, Alberta
building date: unknown
measures: 8 ¼ x 3 ¾ x 2 ¼ inches / 208 x 97 x 57 mm
weight: 5 lb, 12 oz / 2.6 kg
donated: 7 Nov 2013



The Saskatchewan Brick Register

- 21.42 number of bricks: 1
 Description: dark red face brick, with three 1 ½ inch diameter holes, and striations in the back; no inscription
 source: Office Building – SE corner 11th Ave & Albert St., Regina, Sask.
 building date: 2011-2013
 measures: 7 ¾ x 3 ½ x 2 ⅛ inches / 197 x 88 x 55 mm
 weight: 3 lb, 8 oz / 1.55 kg
 donated: 7 Nov 2013



- 21.43 number of bricks: 1
 Description: beige face brick, with 10 – ¾ inch diameter holes, and the following inscription on the back: **CANADA CANADA 86 42**
 Manufacturer: possibly Estevan Brick Company; similar to bricks 6.4 and 21.34; but date code is similar to I-XL, Medicine Hat, Alberta
 source: Provincial Laboratory, 3211 Albert St., Regina, Sask.
 building date: ca. 1955
 measures: 7 ⅜ x 3 ½ x 2 ¼ inches / 187 x 88 x 56 mm
 weight: 3 lb, 0 oz / 1.35 kg
 donated: 7 Nov 2013



The Saskatchewan Brick Register

- 21.44 number of bricks: 1
 Description: beige face brick, with 10 – ¾ inch diameter holes, and the following inscription on the back: **CANADA CANADA 91**
 source: Estevan Brick scrap pile, Estevan, Sask. – found 29 Feb. 2012.
 Manufacturer: presumably Estevan Brick Company; similar to bricks 6.7 and 21.34, 21.45
 building date: unknown
 measures: 7 ½ x 3 ½ x 2 ⅛ inches / 192 x 90 x 55 mm
 weight: 3 lb, 2 oz / 1.45 kg
 donated: 7 Nov 2013

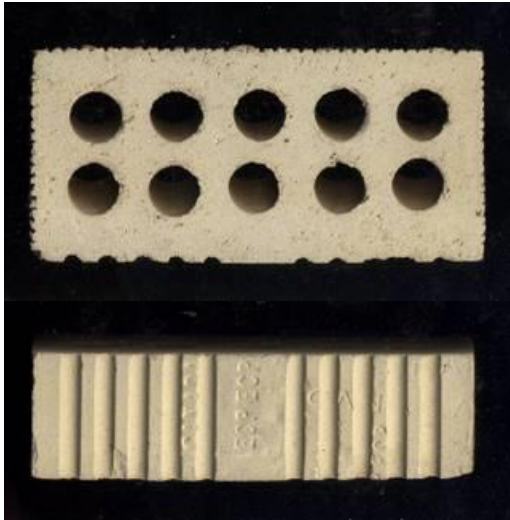


- 21.45 number of bricks: 1
 Description: beige face brick, with 3 large elliptical holes, and the following inscription on the back: **CANADA CANADA 28 93**
 source: Estevan Brick scrap pile, Estevan, Sask. – found 29 Feb. 2012.
 building date: unknown
 measures: 9 x 3 ½ x 2 ¾ inches / 230 x 90 x 70 mm
 weight: 5 lb, 0 oz / 2.25 kg
 donated: 7 Nov 2013

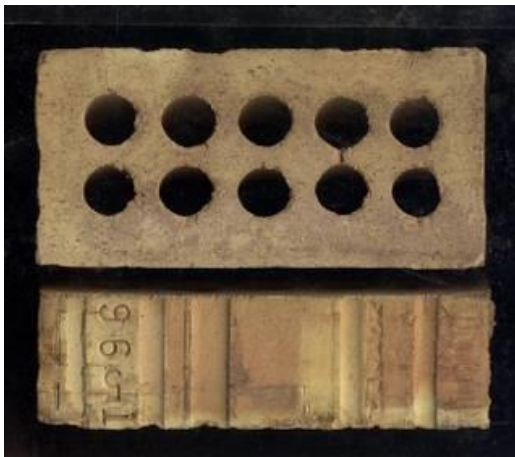


The Saskatchewan Brick Register

- 21.46 number of bricks: 1
 Description: beige face brick, with rough texture and 10 small $\frac{3}{4}$ inch holes, and the following inscription on the back: **CANADA ECP ECP CANADA**
 source: not applicable (“ECP” might stand for Estevan Clay Products)
 building date: unknown
 measures: $7\frac{7}{8}$ x $3\frac{5}{8}$ x $2\frac{1}{4}$ inches / 196 x 93 x 56 mm
 weight: 3 lb, 2 oz / 1.45 kg
 donated: 7 Nov 2013



- 21.47 number of bricks: 3
 Description: beige face brick, with smooth face and 10 small $\frac{3}{4}$ inch holes, and the following inscription on the back: **CANADA I-XL 1 5 96**
 source: unknown –
 Manufacturer: made at I-XL, Medicine Hat, Alberta; similar to brick 21.34
 building date: unknown
 measures: $7\frac{1}{2}$ x $3\frac{5}{8}$ x $2\frac{1}{4}$ inches / 192 x 93 x 56 mm
 weight: 3 lb, 0 oz / 1.4 kg
 donated: 7 Nov 2013



The Saskatchewan Brick Register

- 21.48 number of bricks: 1
Description: beige face brick, with smooth face and a deep frog, but no inscription
source: Imperial Bank of Canada, Rosthern, Sask.
building date: 1903
measures: $8 \frac{1}{8}$ x $3 \frac{3}{4}$ x $2 \frac{3}{8}$ inches / 205 x 95 x 60 mm
weight: 3 lb, 14 oz / 1.75 kg
donated: 7 Nov 2013



- 21.49 number of bricks: 2
Description: beige face brick, with smooth face and a deep frog, but no inscription
source: approx. Katepwa Brick Plant site, Katepwa, Sask.
building date: 1900
measures: 8 x $3 \frac{5}{8}$ x $2 \frac{1}{4}$ inches / 205 x 93 x 60 mm
weight: 4 lb, 0 oz / 1.8 kg
donated: 7 Nov 2013



The Saskatchewan Brick Register

- 21.50 number of bricks: 2
 Description: dark red smooth face brick, without a frog or inscription; one includes grey mortar; both were painted grey when the facade was painted in the 1980s – very smooth on all six sides
 source: Black Block, Hamilton Street, Regina, Sask.
 building date: 1910
 measures: $8\frac{1}{2}$ x $3\frac{7}{8}$ x $2\frac{3}{8}$ inches / 215 x 98 x 60 mm
 weight: 5 lb, 6 oz / 2.4 kg
 donated: 7 Nov 2013



- 21.51 number of bricks: 1 – plus a brick fragment
 Description: beige smooth face brick, with two rectangular holes; no inscription; with wire cut marks from an extruded brick press operation
 source: not applicable – found at Assiniboia Brick Yard site, Indian Head, Sask.
 building date: 1883 to 1905
 measures: $8\frac{1}{2}$ x $4\frac{1}{8}$ x $2\frac{3}{8}$ inches / 215 x 105 x 60 mm
 weight: 4 lb, 8 oz / 2.0 kg
 donated: 7 Nov 2013



The Saskatchewan Brick Register

- 21.52 number of bricks: 1 plus a fragment
 Description: grey smooth face brick, with a moderately deep frog; no inscription;
 source: not applicable – found at Assiniboia Brick Yard site, Indian Head, Sask.
 building date: 1883 to 1905
 measures: 8 ⅞ x 3 ½ x 2 ¼ inches / 210 x 93 x 60 mm
 weight: 4 lb, 7 oz / 2.0 kg
 donated: 7 Nov 2013



- 21.53 number of bricks: 3
 Description: greyish-beige smooth face brick, with a shallow frog; no inscription
 source: not applicable – found at Assiniboia Brick Yard site, Indian Head, Sask.
 building date: 1883 to 1905
 measures: 8 ¼ x 4 x 2 ⅞ inches / 205 x 97 x 56 mm
 weight: 3 lb, 10 oz / 1.7 kg
 donated: 7 Nov 2013



because the
sta become
me alarmed
hey put on
and North
ealing with
helped to
nger, who is
iron direc-

President Ar-
is just come
tion Critic
of St. An-
etary Chan-
on Sunday
When the
aware that
to be pres-
as reserved
orted with
he minister
secular elo-
the prayer
ervice, and
"dis con-
de gud ole
t dissem."
the Presi-
od preacher
spectacles,
in a clear

Adem
all.
y the divine
ation until
g, and those
t President
ve all the
e inspiring

Pres. at Regina aforesaid, and all claims
against the said partnership are to be
presented to the said Robert D. Priest, by whom
the same will be settled.
Dated at Regina aforesaid, this 22th day of
July, A. D. 1882.
Witness,
JAMES H. DENSON. ISAAC SHUTER.
ROBT. D. PRIEST.

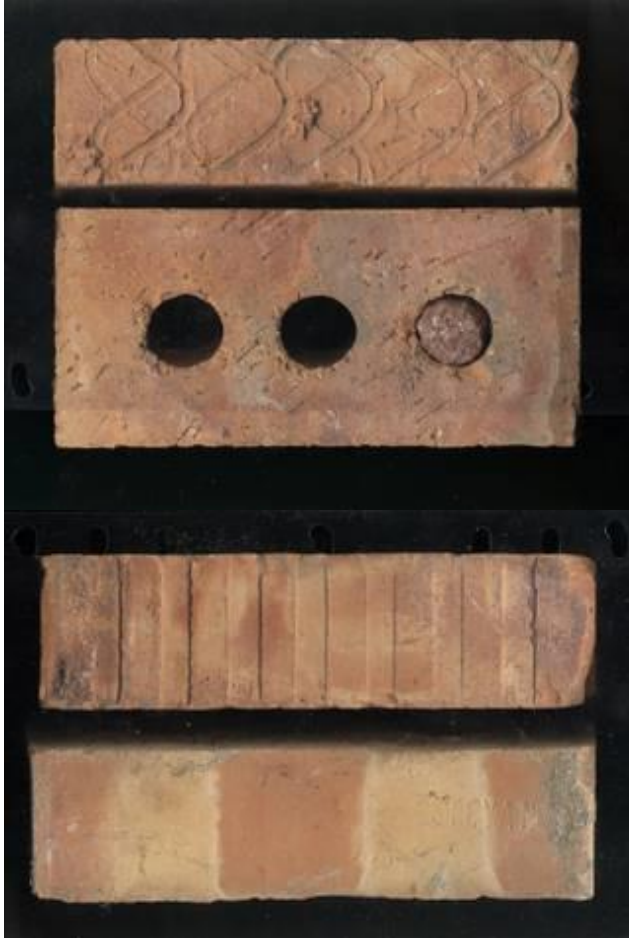
BRICK FOR SALE
 AT THE
Assiniboia Brick Yard
 TWO MILES WEST OF INDIAN HEAD.
MAASS, MANGELSDORF & CO.
 PROPRIETORS,
 PRICES, AT THE YARD :
 Under 5000—\$20 per 1000.
 Over 5000—\$18 per 1000.
 PRICES, ON CARS AT INDIAN HEAD :
 Under 5000—\$21 per 1000,
 Over 5000—\$19 per 1000.
 ADDRESS:
MAASS, MANGELSDORF & CO.
 Indian Head, N. W. T.
 All persons in and around Regina can see
specimens at the LEARNER office, Regina. 20-41

EXCELSIOR BAKING COMPANY
 Is where you can get all kinds of

AM
LU
Late Car
LU
SH
A Complete
YARD
SOUTH R
REGI
166m
NOTICE
Notice is hereby
of Regina, has m

The Saskatchewan Brick Register

21.54	number of bricks:	4
	description	orangey-beige rough textured face brick with no frog; three holes. Two have striations on the back; at least two were made at Estevan Brick, Estevan, Sask.; include imprint: ESTEVAN CANADA ESTEVAN
	source:	Plains Hotel, Victoria & Albert St., Regina, Saskatchewan
	building date:	ca. 1955
	measures:	8 x 3 ½ x 2 ¼ inches / 201 x 92 x 57 mm
	weight:	3 lb, 12 oz / 1.69 kg
	donated:	Dec. 2011



The Saskatchewan Brick Register

21.55 number of bricks: 1
description: orangey-beige rough textured face brick with no frog; three holes; imprinted on the back: **SASKATCHEWAN CLAY PRODUCTS**
ESTEVAN SASK. CANADA
source: Luther College Addition, Melville, Saskatchewan
building date: ca. 1955
measures: 8 x 3 $\frac{5}{8}$ x 2 $\frac{1}{8}$ inches / 201 x 95 x 55 mm
weight: 3 lb, 10 oz / 1.65 kg
donated: Dec. 2011



The Saskatchewan Brick Register

21.56 number of bricks: 1
description orangey-beige smooth fire brick with no frog;
imprinted on the top: **STAR**
source: grounds of former Morinville Convent, Morinville Alberta
building date: unknown / not applicable
measures: $8\frac{3}{4}$ x $4\frac{1}{2}$ x $2\frac{1}{2}$ inches / 223 x 113 x 60 mm
weight: 8 lb, 7 oz / 3.8 kg
donated: April 23, 2015



21.57 number of bricks: 1
description dark red, smooth face brick with **PREMIER** imprinted in the frog
source: Mark Ethier residence, Deloraine, Manitoba
building date: ??????
measures: $8\frac{1}{4}$ x $3\frac{7}{8}$ x $2\frac{1}{4}$ inches / 210 x 100 x 60 mm
weight: 4 lb, 10 oz / 2.1 kg
donated: July 27, 2015 via Andy Korvemaker



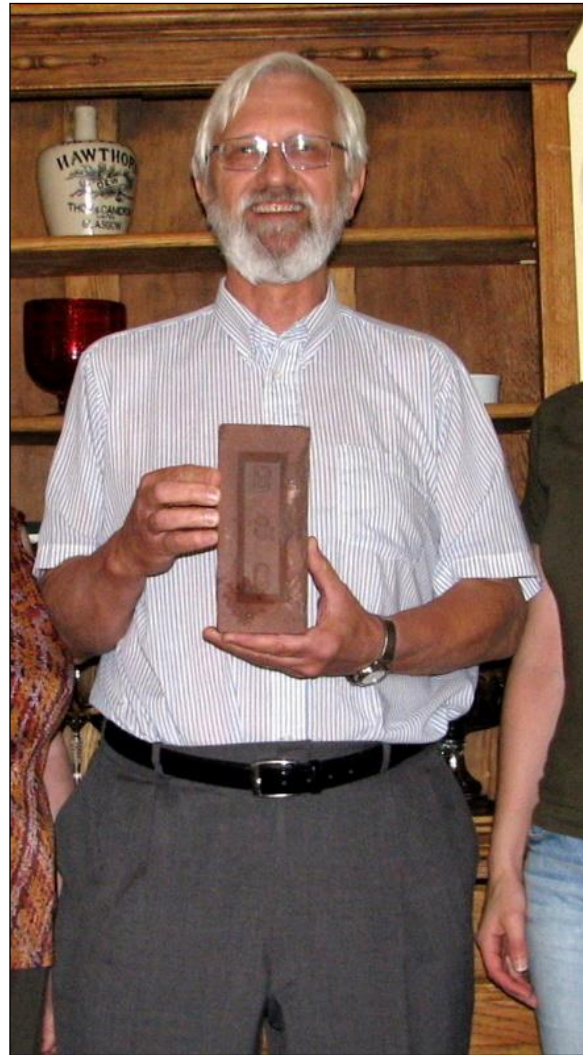
The Saskatchewan Brick Register

21.58 number of bricks: 1
description: red, smooth face brick with **REDCLIFF** imprinted in the shallow frog;
also screw head marks inside the frog and on the back
source: Pump House, Kerrobert
building date: 1914
measures: $8\frac{1}{4}$ x $3\frac{7}{8}$ x $2\frac{1}{4}$ inches / 210 x 100 x 60 mm
weight: 5 lb, 8 oz / 2.5 kg
donated: July 29, 2015



The Saskatchewan Brick Register

21.59 number of bricks: 1
description: dark red, smooth face brick with **B & C** imprinted in the deep frog; also screw head marks inside the frog, above and below the “&”
source: unknown
building date: unknown
measures: 8 ¼ x 3 ½ x 2 ⅜ inches / 205 x 90 x 58 mm
weight: 4 lb, 10 oz / 2.1 kg
donated: July 25, 2012 by Jim Baxter to Frank Korvemaker while we visited Canmore, Alberta



Frank Korvemaker with B & C brick

The Saskatchewan Brick Register

21.60	number of bricks:	1
	description:	pinkish-beige, smooth face brick with ALSIP imprinted in the deep frog
	source:	Bruno Brick Works furnace – filler brick
	manufacturer:	Alsip Brick and Tile Company, Winnipeg, Manitoba between 1895 and 1959.
	building date:	ca. 1914
	measures:	8 ⅛ x 3 ¾ x 2 ⅜ inches / 204 x 95 x 60 mm
	weight:	3 lb, 10 oz / 1.7 kg
	donated:	July 29, 2015 – picked up on site



The Saskatchewan Brick Register

21.61 number of bricks: 2
description: red, smooth face brick with no frog or imprints
source: Bruno Brick Works kiln – date of construction of the kiln and chimneys – may not have been made on-site, as plant was not yet operational
building date: ca. 1914
measures: $8\frac{1}{4}$ x 4 x $2\frac{1}{2}$ inches / 210 x 100 x 60 mm
weight: 4 lb, 9 oz / 2.1 kg
donated: July 29, 2015 – picked up on site



The Saskatchewan Brick Register

- 21.62 number of bricks: 2
description: red, smooth Menomonie face brick with no frog or imprints, very rough sides and back
source: Connaught School, Regina
building date: 1912-13
measures: $7\frac{3}{4}$ x $3\frac{1}{2}$ x $2\frac{1}{4}$ inches / 198 x 88 x 58 mm
weight: 4 lb, 2 oz / 1.9 kg
donated: 23 September 2014 – picked up on site during demolition



- 21.63 number of bricks: 2
description: pale yellow face brick with no frog, but does include three holes, and the following imprint in the back: **SASK CLAY PRODUCTS – ESTEVAN CANADA**
source: Unknown, apartment on Argyle Street, south of 25th Avenue, Regina
building date: 1960s
measures: $8\frac{1}{4}$ x 4 x $2\frac{1}{2}$ inches / 210 x 100 x 60 mm
weight: 4 lb, 2 oz / 1.9 kg
donated: 28 Oct. 2013 – picked up on site during renovations

The Saskatchewan Brick Register



- 21.64 number of bricks: 1
description: partial pale yellow fire brick with a shallow frog on two sides, including the following imprint on the top: **EXCELSIOR COAL Co Ltd WINNIPEG**; back frog includes a floral-like design
source: Unknown
building date: Unknown
measures: 7 ½ x 4 x 2 ⅝ inches / 190 x 100 x 67 mm - original length probably close to 9 inches / 227 mm
weight: 3 lb, 9 oz / 1.7 kg (original ca. probably close to at least 4 lbs.)
donated: 8 Feb. 2014 – given to me (Frank Korvemaker) at Saskatoon Heritage Society PowerPoint Presentation



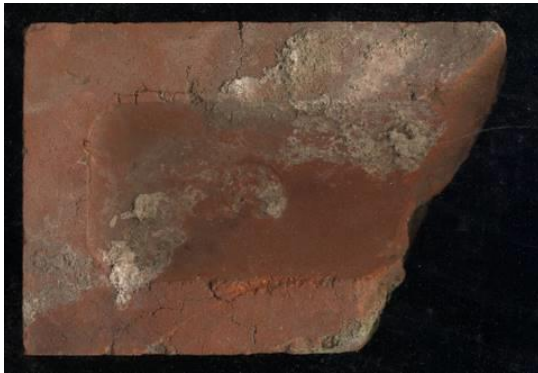
- 21.65 number of bricks: 2
description: orangey-red face brick with a deep frog, including the following imprint: **SNYDER**; indicating manufacture in Manitoba by the Snyder Brick Company
source: Indian Hospital, Fort Qu'Appelle
building date: Unknown
measures: 8 ⅛ x 3 ⅞ x 2 ¼ inches / 205 x 97 x 58 mm
weight: 3 lb, 9 oz / 1.7 kg
donated: 16 May. 2014 – found on the hospital site during demolition

The Saskatchewan Brick Register



Website photo

21.66 number of bricks: 1
description: orangey-red face brick with a shallow curved frog, and no inscription: a round mark is imprinted into the back
source: Michael Block, Mortlach, Sask.
building date: 1911
measures: $8 \frac{1}{8}$ x $3 \frac{7}{8}$ x $2 \frac{1}{4}$ inches / 205 x 97 x 58 mm
weight: 3 lb, 9 oz / 1.7 kg
donated: 30 July 2015 – found on site



The Saskatchewan Brick Register

21.67 number of bricks: 2 (A and B)
description: pale yellow / beige face brick with a deep frog, and no inscription; two screw marks in the frog ends, and pronounced wood mould marks on the base. Reportedly made at Lumsden Brick Plant.
source: Godwin Residence, 2128 McIntyre Street, Regina
building date: 1908
measures: A: 8 ½ x 3 ⅞ x 2 ¼ inches / 215 x 97 x 58 mm
B: 8 ½ x 3 ⅞ x 2 ⅛ inches / 215 x 97 x 55 mm
weight: A: 4 lb, 0 oz / 1.75 kg
B: 3 lb, 13 oz / 1.7 kg
donated: 9 Nov 2015 – found on site



The Saskatchewan Brick Register

21.68	number of bricks:	2 (A and B)
	description	pale yellow / beige face brick with a shallow frog, and no inscription or any screw marks; somewhat irregular shape.
	source:	chimney on the Boulding Farmhouse, north of Regina, in the Qu'Appelle Valley, RM of Lumsden, Sask.
	Manufacturer:	probably made locally in hand moulds
	building date:	ca. 1890
	measures:	A: $8\frac{3}{8}$ x 4 x $2\frac{3}{8}$ inches / 212 x 100 x 59 mm B: $8\frac{1}{4}$ x $3\frac{7}{8}$ x $2\frac{1}{4}$ inches / 208 x 97 x 56 mm
	weight:	A: 4 lb, 11 oz / 2.15 kg B: 4 lb, 9 oz / 2.1 kg
	donated:	9 May 2017 – found on site



Top of brick a



Face



Top of brick b



The Saskatchewan Brick Register

- 21.69 number of bricks: 1
description: orangery-red face brick with a shallow frog, and the letters **PERRY REDC. . . .** embossed inside the frog (letters not fully legible due to very hard cement-like mortar)
source: rubble pile next to Crown / Weston Bakery, 1377 Hamilton, Regina, Sask.
Manufacturer: PERRY brick company, Redcliff, Alberta
building date: 1928
measures: 8 x 3 ¾ x 2 ¼ inches / 202 x 95 x 56 mm
weight: 5 lb, 4 oz / 2.35 kg – including mortar`
donated: 19 June 2017 – found on site

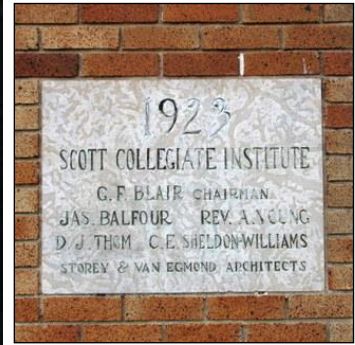


- 21.70 number of bricks: 1
description: orangery-red face brick with a shallow frog, and the letters **PERRY** embossed inside the frog
source: rubble pile next to Crown / Weston Bakery, 1377 Hamilton, Regina, Sask.
Manufacturer: PERRY brick company, Redcliff, Alberta
building date: 1928
measures: 8 x 3 ¾ x 2 ¼ inches / 202 x 95 x 56 mm
weight: 4 lb, 11 oz / 2.15 kg – including mortar`
donated: 19 June 2017 – found on site



The Saskatchewan Brick Register

21.71	number of bricks:	2 (#21.71 and #21.71b)
	description	light brown face brick without a frog or any textual imprints, with black flecks throughout the clay – known as T. P. Moka or TeePee Moka
	source:	demolition of Scott Collegiate, 3320 – 7 th Ave., Regina, Sask.
	Manufacturer:	Dominion Fire Brick and Clay Products Ltd., Claybank, Sask.
	building date:	1923
	measures:	8 1/8 x 3 7/8 x 2 3/8 inches / 208 x 97 x 61 mm
	weight:	5 lb, 3 oz / 2.35 kg
	donated:	27 July 2017 – removed from west of datestone location



21.72	number of bricks:	2 (a and b)
	description	beige face brick with the letters T. P. Moka imprinted in the frog. Also known as TeePee Moka . The faint black flecks are key characteristics of this brick type. Brick “b” also shows discolouration due to the brick stacking during firing process.
	source:	unknown; possibly from one of the Claybank scrap brick piles
	Manufacturer:	Dominion Fire Brick and Clay Products Ltd., Claybank, Sask.
	building date:	unknown / not applicable
	measures:	8 1/8 x 3 7/8 x 2 3/8 inches / 208 x 97 x 61 mm
	weight:	4 lb, 7 1/2 oz / 2.05 kg
	donated:	7 August 2017

The Saskatchewan Brick Register

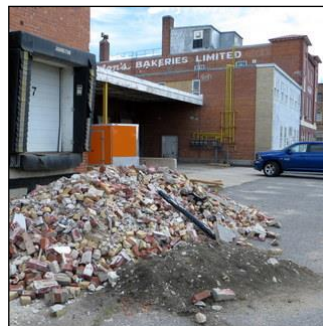


Brick a



Brick b

- 21.73 number of bricks: 1
description: pale yellow filler brick, with three holes just under 1 inch in diameter and no manufacturer lettering
source: rubble pile next to Crown / Weston Bakery, 1377 Hamilton, Regina, Sask.
Manufacturer: unknown
building date: 1928
measures: 8 x 3 ¾ x 2 ½ inches / 202 x 95 x 53 mm
weight: 3 lb, 11 oz / 1.7 kg
donated: 19 June 2017 – found on site



- 21.74 number of bricks: 1
description: pale yellow rough textured face brick (three sides), with three holes about ¾ inch in diameter and no manufacturer lettering; some paint flakes on the back
source: rubble pile next to Crown / Weston Bakery, 1377 Hamilton, Regina, Sask.
manufacturer: unknown – possibly Estevan Brick
building date: 1928
measures: 8 x 3 ¾ x 2 ¼ inches / 202 x 95 x 55 mm
weight: 3 lb, 12 oz / 1.75 kg
donated: 19 June 2017 – found on site

The Saskatchewan Brick Register



- 21.75 number of bricks: 1 - almost complete (plus a complementary fragment)
description: pale yellow rough textured face brick (three sides), with five elliptical holes about 1 inch long and ¼ inch wide, spaced about 1 inch apart; and no manufacturer lettering. NOTE: fragment is not part of this brick, and is larger than the missing portion of the brick
source: rubble pile next to Crown / Weston Bakery, 1377 Hamilton, Regina, Sask.
manufacturer: unknown – possibly Estevan Brick
building date: 1928
measures: approx. 8 x 3 ¾ x 2 ¼ inches / 202 x 95 x 55 mm
weight: brick - 3 lb, 6 oz / 1.5 kg
fragment - 1 lb, 6 oz / 0.6 kg
donated: 19 June 2017 – found on site



(L) Fragment and main brick segment; and (R) Fragment placed with holes lined up to form full brick length

- 21.76 number of bricks: 1
description: “Onyx Ironspot; smooth”: dark grey face brick with three holes about 1 ½ inch wide and 1 ¾ inch long, spaced about ¾ inch apart; and **HBC 150** imprinted on the back
source: new construction: Co-op Car Wash, south Albert St., Regina, Sask.
manufacturer: HEBRON Brick Company, Hebron, North Dakota
building date: 2017
measures: 7 ⅝ x 3 ⅝ x 2 ¼ inches / 193 x 92 x 56 mm
weight: 3 lb, 8 oz / 1.6 kg
donated: 10 August 2017

The Saskatchewan Brick Register



- 21.77 number of bricks: 1
description "Sea Gray #6 – Velour": a large beige face brick with five holes about 1 ½ inch wide and 1 ¾ inch long, spaced about ½ inch apart; includes the number **16 or 150** and **HBC** imprinted on the back.
source: new construction: Co-op Car Wash, south Albert St., Regina, Sask.
manufacturer: HEBRON Brick Company, Hebron, North Dakota
building date: 2017
measures: 11 ⅝ x 3 ⅝ x 3 ⅝ inches / 295 x 92 x 92 mm
weight: 8 lb, 6 oz / 3.75 kg
donated: 10 August 2017



- 21.78 number of bricks: 1
description light brown face brick with 10 holes and 8 half round grooves in the back. Imprinted onto the back: **CANADA CANADA 43 82**
source: demolition of Scott Collegiate, 3320 – 7th Ave., Regina, Sask.
Manufacturer: Unknown.
building date: Addition – est. 1980s
measures: 7 ½ x 3 ½ x 2 ¼ inches / 190 x 90 x 55 mm
weight: 3 lb, 8 oz / 1.6 kg
donated: 22 August 2017 – removed from site debris

The Saskatchewan Brick Register

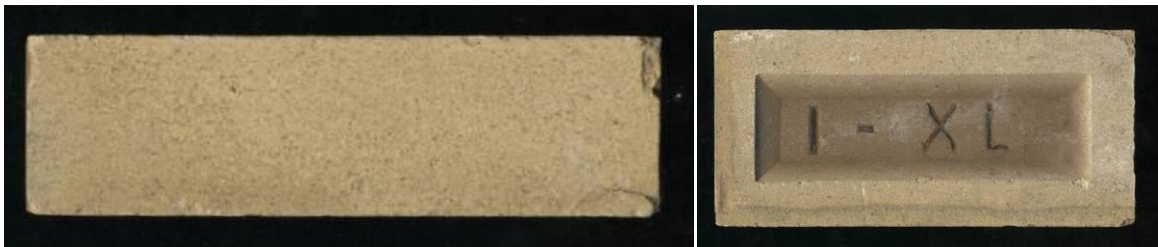


Back of Annex brick



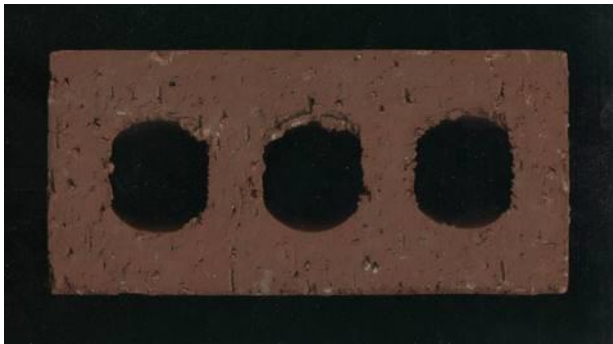
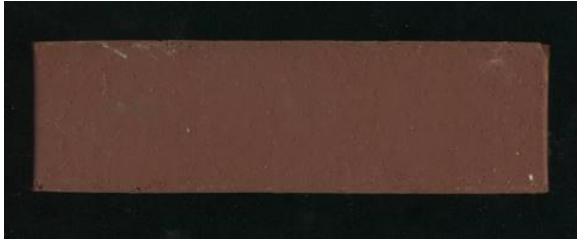
Annex brick – top; and T.P. Moka – bottom (21.71b)

21.79	number of bricks:	1
	description	pale yellow smooth face brick, imprinted with: I-XL in the frog
	source:	rubble pile next to Crown / Weston Bakery, 1377 Hamilton, Regina, Sask.
	manufacturer:	I-XL, Medicine Hat, Alberta
	building date:	1928
	measures:	7 ⁷ / ₈ x 3 ⁵ / ₈ x 2 ¹ / ₄ inches / 198 x 93 x 55 mm
	weight:	4 lb, 9 oz / 2.1 kg
	donated:	16 April 2018 – found on site



The Saskatchewan Brick Register

- 21.80 number of bricks: 1
description: dark red smooth face brick, with three holes and imprinted with: **059** on the back
source: rubble pile next to Crown / Weston Bakery, 1377 Hamilton, Regina, Sask.
manufacturer: Unknown
building date: 2017 - north addition to 1928 Weston Bakery
measures: 7 ⁵/₈ x 3 ¹/₂ x 2 ¹/₄ inches / 194 x 90 x 55 mm
weight: 3 lb, 8 oz / 1.6 kg
donated: 16 April 2018 – found on site



- 21.81 number of bricks: 1
description: “Sequoia Ridge”, dark red, fairly smooth face brick, with five holes
source: extra brick pile next to Bishop’s Court, Diocese of Qu’Appelle, College and Broad, Regina, Sask. (front & back appear to be interchangeable)
manufacturer: ACME Brick, Great Lakes Plant, Springfield, Minnesota, USA (production at Springfield plant ceased in 2014)
building date: ca. 2005
measures: 9 ¹/₂ x 3 ¹/₂ x 3 inches / 242 x 90 x 77 mm
weight: 6 lb, 0 oz / 2.7 kg
donated: 26 Sept. 2017 – found on site



The Saskatchewan Brick Register



- 21.82 number of bricks: 1
description: Red face brick with the letters **R C P Co** imprinted in an oval frog.
source: unknown
manufacturer: Ross Clay Products Company, Redcliff, Alberta
building date: Unknown
measures: $8\frac{3}{8}$ x $3\frac{7}{8}$ x $2\frac{3}{8}$ inches / 212 x 97 x 61 mm
weight: 5 lb, 10 oz / 2.55 kg
donated: 28 May 2018

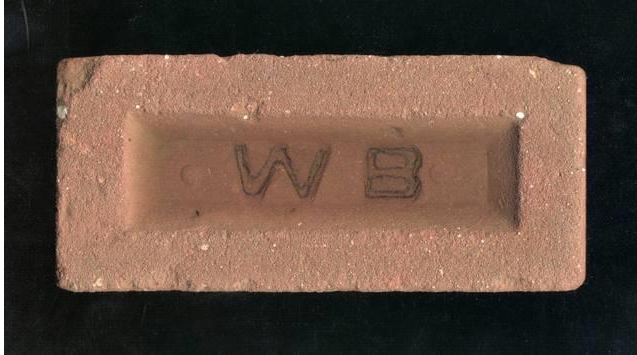


- 21.83 number of bricks: 3
description: Beige face or filler bricks, with three round holes (someone wrote extensively all over these bricks).
source: Unknown
manufacturer: Unknown
building date: Hill Avenue Drugs, 3410 Hill Ave, Regina, Sask.
measures: 8 x $3\frac{3}{4}$ x $2\frac{1}{8}$ inches / 204 x 95 x 53 mm
weight: 3 lb, 15 oz / 2.0 kg
donated: 28 May 2018



The Saskatchewan Brick Register

- 21.84 number of bricks: 1
description: Red face brick, possibly cement or sand lime, with **W B** imprinted in the frog
source: Charlie Parker farmhouse, Cardross, Sask.
manufacturer: Winnipeg Brick Company, Manitoba
building date: 1917-18
measures: $8 \frac{3}{8}$ x $3 \frac{5}{8}$ x $2 \frac{1}{4}$ inches / 207 x 93 x 57 mm
weight: 4 lb, 11 oz / 2.15 kg
donated: 14 August 2018 – found at farm



- 21.85 number of bricks: 2
description: Red face brick, with **I XL** imprinted vertically in the shallow frog on partial brick; thick mortar / cement on second brick
source: Farmhouse chimney, E of Rouleau, Sask.; just west of Hwy 6 & Hwy 714
manufacturer: Redcliff Brick and Coal / I-XL Industries, Redcliff, Alberta
building date: Unknown – c.1910
measures: 8 x $3 \frac{3}{4}$ x $2 \frac{1}{4}$ inches / 202 x 94 x 57 mm
weight: 5 lb, 13 oz / 2.62 kg
donated: 19 December 2018 – found at farm



The Saskatchewan Brick Register

- 21.86 number of bricks: 2
description: Orangey-red face brick, with no manufacturing marks
source: Municipal Power Plant, Rouleau, Sask.
manufacturer: Redcliff Brick and Coal / I-XL Industries, Redcliff, Alberta
building date: 1911
measures: (1) 8 ¼ x 4 x 2 ⅜ inches / 210 x 102 x 60 mm
(2) 8 x 3 ⅞ x 2 ⅜ inches / 202 x 100 x 60 mm
weight: (1) 5 lb, 0 oz / 2.25 kg
(2) 5 lb, 0 oz / 2.25 kg
donated: 19 December 2018

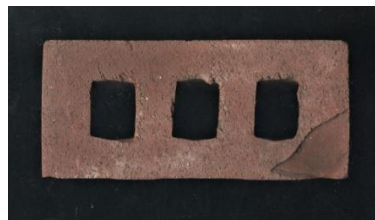


- 21.87 number of bricks: 2
description: Orangey-red face brick, with three holes, each about ⅝ inch in diameter; rough texture on three sides
source: Regina Light and Power, Sub-station 2, Regina, Sask.
manufacturer: Unknown, possibly Estevan Brick (but not Claybank)
building date: 1930
measures: 8 x 3 ¾ x 2 ⅛ inches / 210 x 95 x 53 mm
weight: 4 lb, 0 oz / 1.8 kg
donated: 19 December 2018



The Saskatchewan Brick Register

- 21.88 number of bricks: 1
description: Orangey-red face brick, with three rectangular, each about 1 x 1 ½ inches in diameter; and the following inscription on the back: **SAFETY IS A LIFETIME JOB DOMTAR ↓ DOWN 10-2 MADE IN CANADA** Somewhat rough face
source: Cherry Lane Greenhouses, near Grand Coulee, Sask.
manufacturer: Domtar
building date: Unknown – found on disturbed soil
measures: 7 ⅞ x 3 ½ x 2 ⅞ inches / 200 x 90 x 55 mm
weight: 3 lb, 12 oz / 1.7 kg
donated: 4 June 2019



- 21.89 number of bricks: 1
description: Red face brick, with three rectangular, each about 1 x 1 ½ inches in diameter; with five slots across the back, but without any manufacturer's data; name: **"106 Sandface Modular"**
source: new house construction, SW corner McCallum & Elphinstone, Sask.
manufacturer: Yankee Hill Brick, Lincoln, Nebraska, USA
building date: 2019
measures: 7 ½ x 3 ½ x 2 ¼ inches / 192 x 89 x 56 mm
weight: 3 lb, 6 oz / 1.55 kg
donated: 19 August 2019

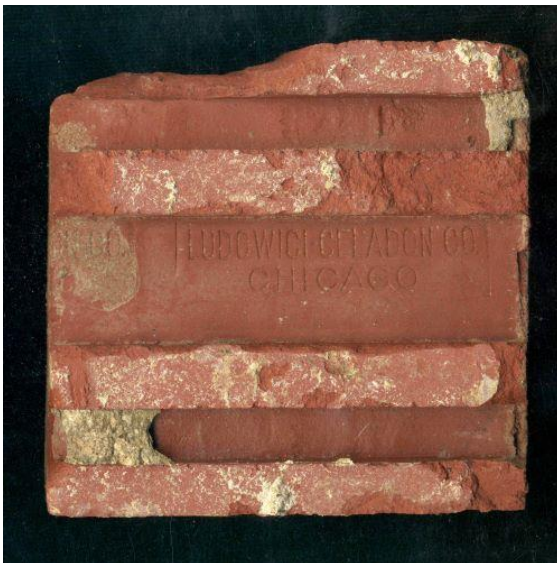


The Saskatchewan Brick Register

- 21.90 number of bricks: 1
description: Orange face brick, with a $\frac{5}{8}$ inch deep frog, but no inscription
source: Kerr-Bronfman House, 2326 College Ave., Regina, Sask.
manufacturer: Unknown
building date: 1911
measures: 8 x 3 $\frac{3}{4}$ x 2 $\frac{1}{4}$ inches / 204 x 96 x 58 mm
weight: 3 lb, 13 oz / 1.7 kg
donated: 18 July 2018 – from foundation rubble pile repairs



- 21.91 number of bricks: 1
description: Dark red clay tile, with three grooves on the bottom
source: Kerr-Bronfman House, 2326 College Ave., Regina, Sask.
manufacturer: Ludowici - Celadon Co., Chicago, Illinois, USA
building date: 1911
measures: 5 $\frac{7}{8}$ x 5 $\frac{7}{8}$ x $\frac{7}{8}$ inches / 150 x 150 x 23 mm
weight: 2 lb, 5 oz / 1.1 kg
donated: 18 July 2018 – from foundation repairs - rubble pile



The Saskatchewan Brick Register

21.92	number of bricks:	1
	description	Red face brick, with a small shallow frog, measuring 1¼ x 2 inches (35 x 55 mm)
	source:	St. Matthew's Anglican Church Chapel, Winnipeg St., Regina, Sask.
	manufacturer:	Canada Cement Company, Sandstone, Alberta (1909-1923)
	building date:	1926
	measures:	8 ¼ x 3 ⅞ x 2 ⅜ inches / 210 x 100 x 60 mm
	weight:	5 lb, 4 oz / 2.5 kg
	donated:	8 August 2020 – from gable repairs - rubble pile



21.93	number of bricks:	1
	description	Red face brick, with a deep frog, inscribed with the letters “ I - X L ”
	source:	St. Matthew's Anglican Church Chapel, Winnipeg St., Regina, Sask. (architect: Francis H. Portnall, Regina)
	manufacturer:	Redcliff Pressed Brick Ltd / I-XL Industries Ltd, Redcliff, Alberta (1912-present)
	building date:	1926
	measures:	8 x 3 ⅝ x 2 ¼ inches / 203 x 95 x 56 mm
	weight:	4 lb, 11 oz / 2.1 kg
	donated:	8 August 2020 – from gable repairs - rubble pile

Note: there is no hyphen between the “I” and the “X” in this version of these I-XL bricks.



without hyphen



with hyphen

The Saskatchewan Brick Register

21.94 number of bricks: 1
description: Red face brick, without a frog or inspection, with a very rough back
source: Regina Normal School, College & Broad St., Regina, Sask.
(architect: Storey & Van Egmond, Regina)
manufacturer: Menomonie, Wisconsin, USA
building date: 1926
measures: 8 x 3 ½ x 2 ¼ inches / 203 x 90 x 56 mm
weight: 4 lb, 4 oz / 2.0 kg
donated: July 2021



21.95 number of bricks: 2 fragments
description: Red face brick, without a frog or inspection, with a very rough back
source: Rectory, St. Matthew's Anglican Church, Winnipeg Street, Regina, Sask.
(architect: Clemesha & Portnall, Regina)
manufacturer: Menomonie, Wisconsin, USA
building date: 1926
measures: a: 4 x 3 ½ x 2 ¼ inches / 100 x 90 x 56 mm
b: 2 ¾ x 3 ½ x 2 ¼ inches / 70 x 90 x 56 mm
weight: a: 2 lb, 4 oz / 1.0 kg
b: 1 lb, 12 oz / 0.8 kg
donated: June 2021



Face: 21.95. a & b



back: 21-95. a & b

The Saskatchewan Brick Register

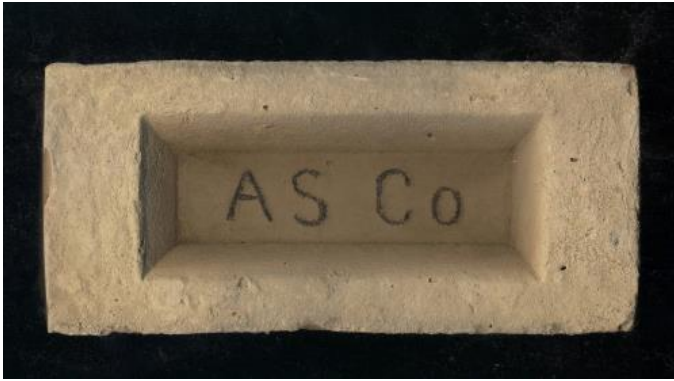


- 21.96 number of bricks: 1
description: buff coloured face brick, with the name **HEBRON, N D** inscribed in a shallow frog.
Manufacturer: Hebron Fire and Pressed Brick Company, Hebron, North Dakota, USA.
source: unknown
building date: unknown
measures: $8 \frac{3}{8}$ x $4 \frac{1}{8}$ x $2 \frac{3}{8}$ inches / 213 x 104 x 60 mm
weight: 5 lb, 6 oz / 2.5 kg
donated: 2018



- 21.97 number of bricks: 1
description: buff coloured face brick, with the name **A S Co** inscribed in a deep frog.
Manufacturer: A. Snyder & Company, Portage La Prairie, Manitoba
source: Garage, Nokomis, Sask.
building date: unknown
measures: $8 \frac{3}{8}$ x $3 \frac{3}{4}$ x $2 \frac{1}{4}$ inches / 213 x 97 x 57 mm
weight: 4 lb, 2 oz / 1.9 kg
donated: 24 Nov. 2016

The Saskatchewan Brick Register



- 21.98 number of bricks: 1
description: light brown T.P. Moka face brick without any lettering imprinted. The faint black flecks are key characteristics of this brick type. Traces of purple mortar are visible on some surfaces.
source: unknown;
Manufacturer: Dominion Fire Brick and Clay Products Ltd., Claybank, Sask.
building date: unknown / not applicable
measures: $8 \frac{1}{8}$ x $3 \frac{7}{8}$ x $2 \frac{3}{8}$ inches / 208 x 97 x 61 mm
weight: 4 lb, 12 oz / 2.15 kg



- 21.99 number of bricks: 1
description: Red face brick, with a deep frog, inscribed with the letters “**IXL**”, with two small oval marks where rivets likely held the mould in place
source: unknown
manufacturer: Redcliff Pressed Brick Ltd / I-XL Industries Ltd, Redcliff, Alberta
building date: unknown
measures: $8 \frac{1}{4}$ x $3 \frac{3}{4}$ x $2 \frac{1}{4}$ inches / 210 x 95 x 58 mm
weight: 5 lb, 0 oz / 2.3 kg
donated: unknown

The Saskatchewan Brick Register

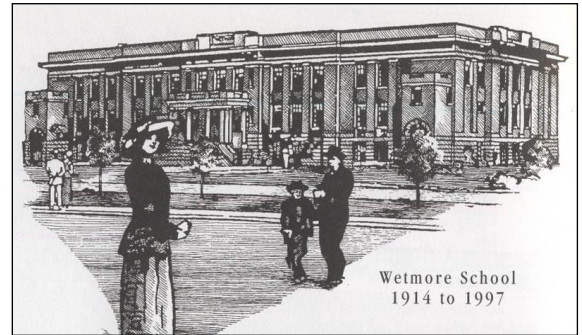
Note: there is no hyphen between the “I” and the “X” in this version of these I-XL bricks.



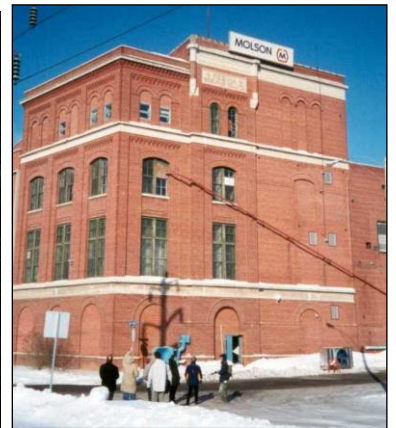
The Saskatchewan Brick Register

22. Donor: Ross Herrington, Regina, Saskatchewan

- 22.1 number of bricks: 2
description: orangey-red face brick with the inscription **I XL** in the frog
source: Wetmore School, Regina, Saskatchewan – 1997 demolition
building date: 1914 (this brick may be from a later addition)
measures: $7 \frac{7}{8}$ x $2 \frac{1}{4}$ x $3 \frac{5}{8}$ inches
donated: January 2, 2003



- 22.2 number of bricks: 2
description: red face brick with the inscription **"PERRY"** in dots in the shallow frog
source: Regina Brewing Company, Regina, Saskatchewan
building date: unknown (this brick may be from a later addition)
measures: $7 \frac{7}{8}$ x $2 \frac{1}{2}$ x $3 \frac{5}{8}$ inches
donated: 2003



The Saskatchewan Brick Register

- 22.3 number of bricks: 1
description red face brick with the inscription **I XL** in a deep frog
source: Regina Brewing Company, Regina, Saskatchewan
building date: unknown (this brick may be from a later addition)
measures: 8 x 2 ¼ x 3 ¾ inches
donated: 2003
- 22.4 number of bricks: 2
description red face brick with the inscription
 “**REDCLIFF PREMIER BRICK**” in the frog
source: Regina Brewing Company, Regina, Saskatchewan
building date: unknown (this brick may be from a later addition)
measures: 8 ⅛ x 2 ¼ x 3 ¾ inches
donated: 2003
- 22.5 number of bricks: 2
description brown face brick with no frog
source: St. Joseph’s Separate School, Regina, Saskatchewan
building date: unknown
measures: 8 ¼ x 4 x 2 7/16 inches
weight: 5 lb, 3 oz / 2.38 kg
donated: 2004



The Saskatchewan Brick Register

- 22.6 number of bricks: 1
 description brown face brick with no frog; black flecks
 source: St. Joseph's Separate School, Regina, Saskatchewan
 building date: unknown (this brick is from the later addition)
 measures: 8 $\frac{1}{8}$ x 3 $\frac{3}{4}$ x 2 $\frac{1}{2}$ inches
 weight: 5 lb, 5 oz / 2.4 kg
 donated: 2004



- 22.7 number of bricks: 1
 description light brown rough textured face brick with no frog;
 black flecks (Claybank: Rough-TeX)
 source: Safeway Store, Dewdney Ave., Regina, Saskatchewan
 building date: unknown
 measures: 8 x 3 $\frac{7}{8}$ x 2 $\frac{3}{8}$ inches;
 donated: 2005



The Saskatchewan Brick Register

- 22.8 number of bricks: 1
description: orangey-beige rough textured face brick with no frog; three holes, and a striated back – probably made at Estevan Brick, Sask.
source: Plains Hotel, Victoria & Albert St., Regina, Saskatchewan
building date: ca. 1955
measures: 8 x 3 ½ x 2 ¼ inches / 20.1 x 9.2 x 5.7 mm
weight: 3 lb, 12 oz / 1.69 kg
donated: Dec. 2011



Face



Back

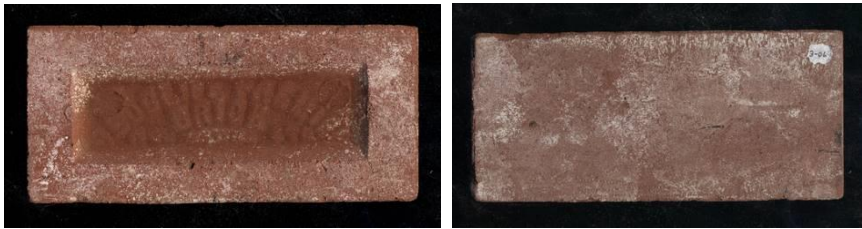


- 22.9 number of bricks: 1 - #1 of 10 numbered bricks
description: a number of bricks donated by Dale Herrington after Ross died in Oct. 2015. This brick: orangey-red filler brick with no frog; Ross added the number “3-09” at one corner of the brick
source: Unknown
building date: Unknown
measures: 8 ¼ x 3 ¾ x 2 ¼ inches / 208 x 95 x 57 mm
weight: 4 lb, 1 oz / 1.85 kg
donated: Dec. and August 2016



The Saskatchewan Brick Register

- 22.10 number of bricks: 1 - #2 of 10 numbered bricks
description: a number of bricks donated by Dale Herrington after Ross died in Oct. 2015. This brick: orangey-red face brick with a shallow frog; Ross added the number "3-06" at one corner of the brick. Inscription in frog reads:
REDCLIFF PREMIER BRICK CO LTD
source: Unknown
building date: Unknown
measures: 8 ¼ x 3 ¾ x 2 ¼ inches / 208 x 95 x 57 mm
weight: 5 lb, 1 oz / 2.28 kg
donated: Dec. and August 2016



- 22.11 number of bricks: 2 - #3 and #4 of 10 numbered bricks
description: a number of bricks donated by Dale Herrington after Ross died in Oct. 2015. This brick: beige face brick with a deep frog; Ross added the number "4-03" and "3-03" at one corner of the brick. Inscription in frog reads: **A S Co** – manufactured by Andrew Snyder & Co in Manitoba. Imprints of the wooden brick mould base very evident on the base of the 4-03 brick, less so for the 3-03 brick
source: Unknown
building date: Unknown
measures: # 4-04: 8 ¼ x 3 ¾ x 2 ¼ inches / 208 x 95 x 57 mm
3-03: 8 ¼ x 3 ¾ x 2 ⅜ inches / 208 x 95 x 60 mm
weight: # 4-03: 3 lb, 9 oz / 1.65 kg
3-03: 3 lb, 12 oz / 1.7 kg
donated: Dec. and August 2016



4-03



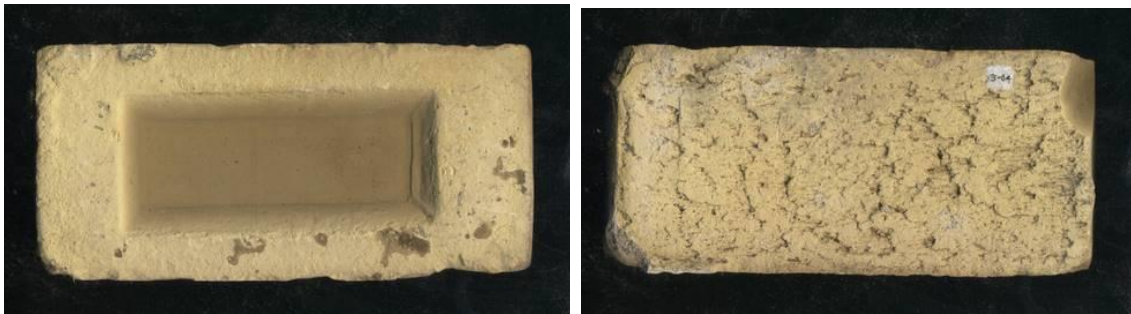
3-03

The Saskatchewan Brick Register

- 22.12 number of bricks: 1 - #5 of 10 numbered bricks
description a number of bricks donated by Dale Herrington after Ross died in Oct. 2015. This brick: light brown face brick with no frog and a rough texture on the face and two ends; Ross added the number “3-02” at one corner of the brick. This brick includes black flecks and was made at the Claybank Brick Plant
source: Unknown
building date: Unknown
measures: $8\frac{1}{4}$ x $3\frac{3}{4}$ x $2\frac{3}{8}$ inches / 208 x 95 x 60 mm
weight: 5 lb, 1 oz / 2.3 kg
donated: Dec. and August 2016

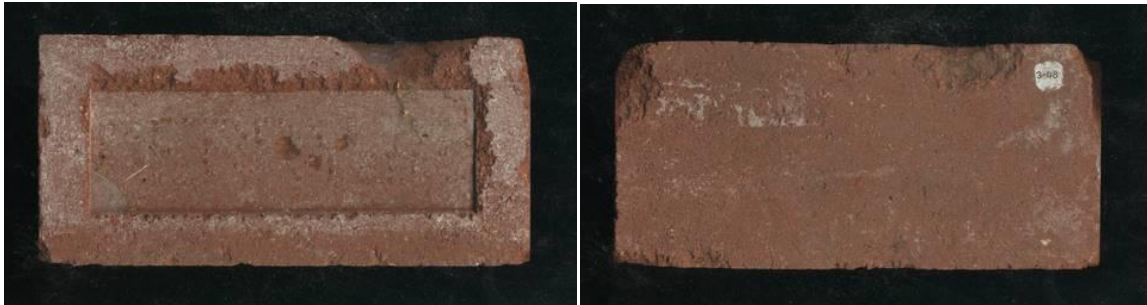


- 22.13 number of bricks: 1 - #6 of 10 numbered bricks
description a number of bricks donated by Dale Herrington after Ross died in Oct. 2015. This brick: pale yellow face brick with a medium depth frog and no inscription, shows evidence of two vertical lines in the frog; Ross added the number “3-04” at one corner of the brick.
source: Unknown
building date: Unknown
measures: $8\frac{1}{4}$ x $3\frac{7}{8}$ x $2\frac{3}{8}$ inches / 208 x 98 x 60 mm
weight: 3 lb, 10 oz / 1.65 kg
donated: Dec. and August 2016

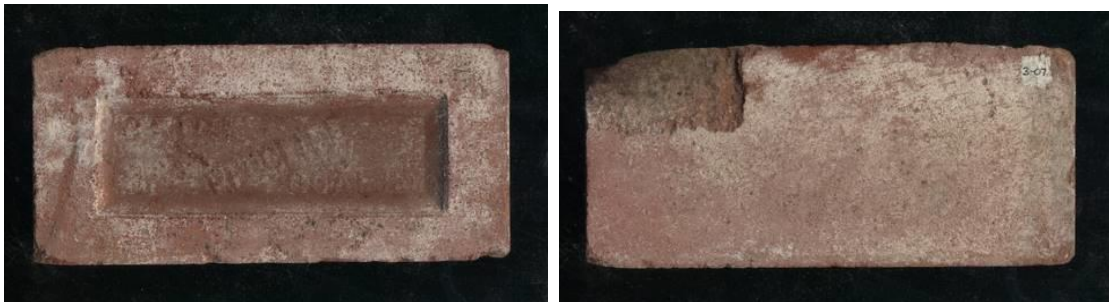


The Saskatchewan Brick Register

- 22.14 number of bricks: 1 - #7 of 10 numbered bricks
description: a number of bricks donated by Dale Herrington after Ross died in Oct. 2015. This brick: dark red face brick with a shallow frog and the name **PERRY ..er..** faintly impressed in the frog; Ross added the number "3-08" at one corner of the brick.
manufacturer: Perry Brick and Tile Company, Redcliff, Alberta
source: Unknown
building date: Unknown
measures: 8 x 3 ¾ x 2 ½ inches / 202 x 96 x 58 mm
weight: 4 lb, 15 oz / 2.2 kg
donated: Dec. and August 2016

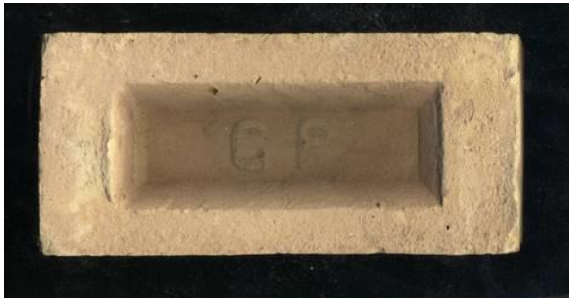


- 22.15 number of bricks: 1 - #8 of 10 numbered bricks
description: a number of bricks donated by Dale Herrington after Ross died in Oct. 2015. This brick: dark red face brick with a medium depth frog and the name **REDCLIFF BRICK & COAL CO** impressed into the frog; Ross added the number "3-07" at one corner of the brick. Brick made in Redcliff, Alberta
source: Unknown
building date: Unknown
measures: 8 ¼ x 3 ¾ x 2 ¼ inches / 210 x 96 x 58 mm
weight: 5 lb, 0 oz / 2.21 kg
donated: Dec. and August 2016



The Saskatchewan Brick Register

- 22.16 number of bricks: 1 - #9 of 10 numbered bricks
description: a number of bricks donated by Dale Herrington after Ross died in Oct. 2015. This brick: pale yellow face brick with a deep frog and the initials “**G P**” impressed into the frog; Ross added the number “4-04” at one corner of the brick. Brick probably made at Gilbert Plains, Manitoba
source: Unknown
building date: Unknown
measures: 8 1/8 x 3 3/4 x 2 1/4 inches / 210 x 96 x 58 mm
weight: 3 lb, 8 oz / 1.6 kg
donated: Dec. and August 2016



- 22.17 number of bricks: 1 - #10 of 10 numbered bricks
description: a number of bricks donated by Dale Herrington after Ross died in Oct. 2015. This brick: pale yellow face or filler brick with three holes, and part of the name “**Estevan, Saskatchewan**” imprinted into the back; Ross added the number “2-02” at one corner of the brick. Made at the Estevan Brick Plant.
source: Unknown
building date: Unknown
measures: 7 3/4 x 3 3/4 x 2 1/4 inches / 195 x 96 x 58 mm
weight: 3 lb, 7 oz / 1.5 kg
donated: Dec. and August 2016



The Saskatchewan Brick Register

- 22.18 number of bricks: 1
description: a number of bricks donated by Dale Herrington after Ross died in Oct. 2015. This brick: orangey-red face brick with a mid-depth frog and the following text imprinted: "**REDCLIFF PREMIER BRICK Co Ltd**"; This brick did not have a number painted onto the back.
source: Unknown
building date: Unknown
measures: 8 ¼ x 3 ⅞ x 2 ¼ inches / 228 x 97 x 58 mm
weight: 5 lb, 1 oz / 2.3 kg
donated: Dec. and August 2016



- 22.19 number of bricks: 1
description: a number of bricks donated by Dale Herrington after Ross died in Oct. 2015. This brick: dark red face brick with no frog or any manufacturer identification marks, with a rough textured face on the front and ends. However, it does have an interesting pattern on the back, possibly part of the conveyor belt used in the extruded brick press process.
source: Unknown
building date: Unknown
measures: 8 ⅜ x 3 ¾ x 2 ½ inches / 213 x 95 x 63 mm
weight: 5 lb, 11 oz / 2.6 kg
donated: Deca. and August 2016



The Saskatchewan Brick Register

23. Donor: Art Landry, Moose Jaw, Saskatchewan

23.1 number of bricks: 2
description: medium to dark brown face brick, no frog or inscription, very coarse texture
source: Belmont Apartments, 630 Main Street N, Moose Jaw
building date: 1913
measures: $8 \frac{1}{8}$ x $2 \frac{3}{8}$ x $3 \frac{3}{4}$ inches
donated: 28 January, 2003 (recovered during demolition)



a – flat side



b – end view



111 Feb. 2003

The Saskatchewan Brick Register

24. Donor: James Taylor, Wolseley, Saskatchewan

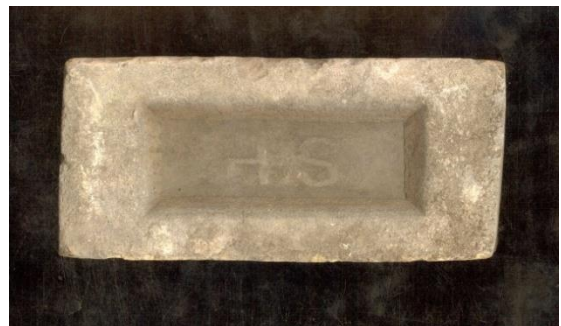
24.1 number of bricks: 1
description: dark buff colour; with **WRD** in the frog, coarse texture
source: found in garden at Wolseley
building date: unknown / not applicable
measures: $8\frac{1}{2}$ x $3\frac{7}{8}$ x $2\frac{7}{8}$ inches
donated: 15 May, 2003



24.2 number of bricks: 2
description: dark buff colour; with **HS** in the frog, coarse texture (H. Stephens, Portage la Prairie, Manitoba – ca. 1892 – ca. 1908)
source: found in garden at Wolseley
building date: unknown / not applicable
measures: $8\frac{1}{8}$ x $3\frac{3}{4}$ x $2\frac{3}{8}$ inches
donated: 15 May, 2003



a



b

The Saskatchewan Brick Register

- 24.3 number of bricks: 4
description: dark buff colour; with “**A S Co**” in the frog, coarse texture (A. Snyder & Company, Manitoba)
source: found in garden at Wolseley
building date: unknown / not applicable
measures: $8\frac{1}{4}$ x $3\frac{3}{4}$ x $2\frac{1}{2}$ inches
donated: 15 May, 2003



a



b

- 24.4 number of bricks: 2
description: light buff colour; with a deep frog, coarse texture
source: found in garden at Wolseley
building date: unknown / not applicable
measures: $8\frac{3}{8}$ x $3\frac{7}{8}$ x $2\frac{1}{2}$ inches
donated: 28 April 2004



The Saskatchewan Brick Register

24.5	number of bricks:	2
	description	light buff colour; with a shallow frog, coarse texture
	source:	found in garden at Wolseley
	building date:	unknown / not applicable
	measures:	7 5/8 x 3 1/4 x 2 1/16 inches
	donated:	28 April 2004



24.6	number of bricks:	2
	description	red colour; with “ A.CA. P. ” inscribed in a shallow frog, smooth texture, (Alberta Clay Products)
	source:	found in garden at Wolseley
	building date:	unknown / not applicable
	measures:	8 x 3 5/8 x 2 1/4 inches
	donated:	28 April 2004



The Saskatchewan Brick Register

24.7 number of bricks: 1 ½
 description light buff colour; with a deep frog, coarse texture
 source: found in garden at Wolseley
 building date: unknown / not applicable
 measures: 8 ¼ x 3 ⅞ x 2 ½ inches
 weight: 4 lb, 2 oz / 1.85 kg
 donated: summer 2006



The Saskatchewan Brick Register

25. Donor: Saskatchewan Property Management Corporation, Regina, Sask.

- 25.1 number of bricks: 2
description: light yellow, face brick with vertical lines on front and two sides, and inscription in the back: "**Sask Clay Products – Estevan, Canada**" and three (3) holes through the flats portion of the brick.
source: Health and Welfare Building, 3211 Albert Street, Regina, Saskatchewan
building date: 1959 – exterior renovated 2003-04
measures: 8 x 3 ¾ x 2 ¼ inches
donated: 8 July, 2003



- 25.2 number of bricks: 2
description: light yellow, filler brick, smooth on all sides, and inscription in the back: "**Sask Clay Products – Estevan, Canada**" and three (3) holes through the flats portion of the brick.
source: Health and Welfare Building, 3211 Albert Street, Regina, Saskatchewan
building date: 1959 – exterior renovated during 2003-04
measures: 8 ⅛ x 3 ¾ x 2 ¼ inches
donated: 8 July, 2003



The Saskatchewan Brick Register

26. Donor: City of Moose Jaw, Moose Jaw, Sask.

- 26.1 number of bricks: 2
description: light orange colour; with **W. W. M. J.** inscribed in the frog, coarse texture; (Wellington White Moose Jaw), Moose Jaw, Saskatchewan
source: Boles Building (Addition), Main Street, Moose Jaw
building date: 1905 – burned Jan. 1, 2004
measures: 8 1/8 x 3 7/8 x 2 1/8 inches
donated: 14 January 2004



- 26.2 number of bricks: 2
description: light orange-red colour; with a frog, coarse texture;
source: Boles Building, Main Street, Moose Jaw
building date: c1900
measures: 8 1/2 x 3 7/8 x 2 3/8 inches
donated: 14 January 2004

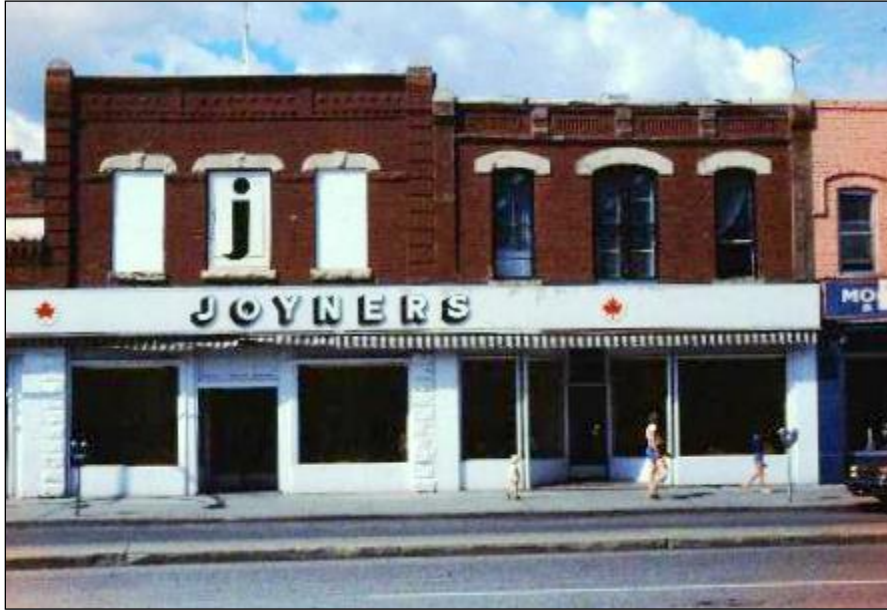
- 26.3 number of bricks: 1
description: light orange-red colour; with a frog, coarse texture;
source: Joyners Building, Main Street, Moose Jaw, Sask.
building date: c1900 – burned Jan 1, 2004
measures: 8 x 4 x 2 3/8 inches
donated: 14 January 2004



Joyners and Boles Buildings before 2004 fire

The Saskatchewan Brick Register

26.4 number of bricks: 1
 description light orangey-red colour; with a deep frog, coarse texture;
 source: Joyners Building, Moose Jaw
 building date: c1900
 measures: $7 \frac{7}{8}$ x $3 \frac{3}{4}$ x $2 \frac{3}{4}$ inches
 donated: 14 January 2004



The Saskatchewan Brick Register

27. Donor: Faye Walker, Alida, Sask.

27.1 number of bricks: 2
description: light buff colour; with **L du B Co.** inscribed in the frog, coarse texture;
(Lac du Bonnet Brick Company, Lac du Bonnet, Manitoba)
source: Rabeau Hardware Store, Carnduff Sask.
building date: ca. 1900
measures: 8 1/8 x 3 7/8 x 2 1/4 inches
donated: November 2003



The Saskatchewan Brick Register

28. Donor: George Barbeau, Mississauga, Ontario

28.1 number of bricks: 2
description: dark red face brick with no inscription in the frog, but with a light blue glaze on the face; two slightly raised stripes on the side opposite the frog, each the full length of the brick, and $\frac{7}{8}$ inch wide, set $\frac{1}{4}$ inch in from the edge; similar $\frac{1}{2}$ inch wide strips are located next to the frog.
source: unknown / not applicable - found in garden.
building date: unknown
measures: $8\frac{3}{8}$ x $3\frac{7}{8}$ x $2\frac{5}{16}$ inches
weight: 5 lb. 4 oz / 2.38
donated: August 2004



The Saskatchewan Brick Register

29. Donor: Ed Brodziak, Regina, Saskatchewan

- 29.1 number of bricks: 4
description: dark reddish brown extruded face brick with no frog and no inscription, but with a rough face texture.
source: Commercial Printers Ltd., 1900 block Albert Street, Regina
building date: 1930
measures: $8 \frac{5}{16}$ x 4 x $2 \frac{1}{2}$ inches
weight: 6 lb / 2.75 kg
donated: May 17, 2005



- 29.2 number of bricks: 1
description: pale yellow filler brick with no manufacturer marks.
source: Commercial Printers Ltd., 1900 block Albert Street, Regina
building date: 1930
measures: $8 \frac{1}{8}$ x $3 \frac{3}{4}$ x $2 \frac{1}{4}$ inches;
weight: 3 lb, 11 oz / 1.75 kg
donated: May 17, 2005



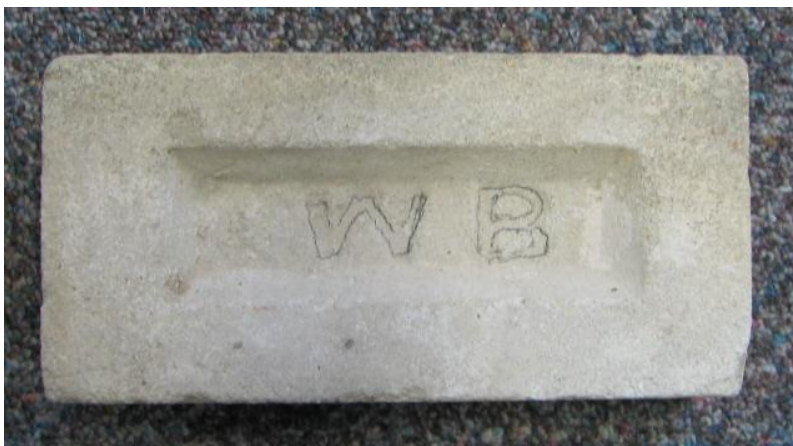
The Saskatchewan Brick Register

30. Donor: Prairie Pioneer Museum, Craik, Saskatchewan

30.1 number of bricks: 1
description: orangey-red pressed face brick with the inscription **R. B. C** in the frog, and with a rough face texture.
source: found on a pile of brick at the Museum grounds
manufacturer: probably the Rosthern Brick Company, operational 1904-1914
building date: unknown / not applicable
measures: 8 ¼ x 4 x 2 ¼ inches
weight: 4 lb / 1.8 kg
donated: January 12, 2006



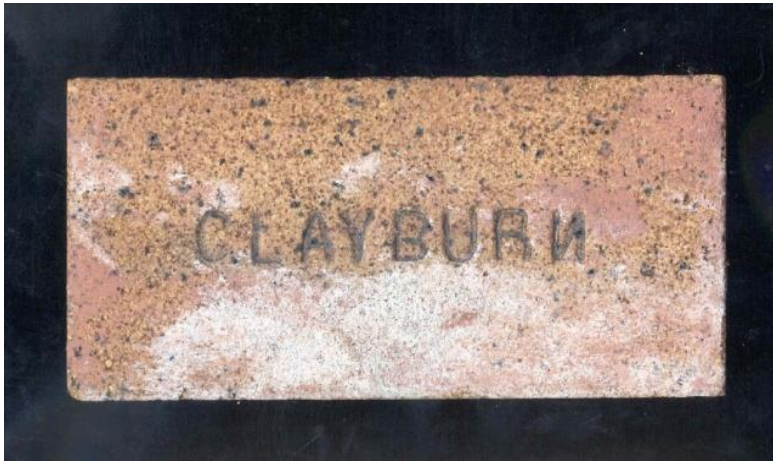
30.2 number of bricks: 1
description: grey pressed brick with **W B** inscription in the frog; coarse surface – possibly lime-sand composition.
source: found on a pile of bricks at the Museum grounds
building date: Unknown
measures: 8 3/16 x 3 15/16 x 2 ¼ inches
weight: 4 lb, 11 oz / 2.15 kg
donated: 12 January 2006



The Saskatchewan Brick Register

31. Donor: Patrick Burns, Vancouver, British Columbia

31.1 number of bricks: 1
description: light brown, with black flecks, with **CLAYBURN** impressed onto the brick surface, smooth face texture, and the “N” reversed
source: Unknown, Kitsilano (Vancouver), B.C.A.
building date: Unknown
measures: 8 ¼ x 4 x 2 7/16 inches
weight: 5 lb, 8 oz / 2.48 kg
donated: April, 2005



31.2 number of bricks: 1
description: orangey red with **VIC. B. Co** inscribed in the shallow frog, smooth face texture,
source: chimney from house at 1822 Balaclava Street, Vancouver, B.C.A.
building date: unknown: 1912 – 1929 brick manufacture
measures: 8 5/8 x 3 13/16 x 2 5/8 inches; 219 x 97 x 66 mm
Weight: 5 lb, 4 oz / 2.4 kg
donated: April, 2005



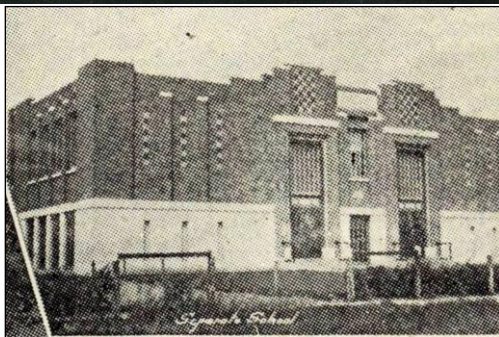
The Saskatchewan Brick Register

32. Donor: Norm Duer, Humboldt, Saskatchewan

- 32.1 number of bricks: 1
description orange face brick with “**ROSTHERN**” inscribed in the frog; coarse surface
source: St. Augustine’s Roman Catholic Church, Humboldt
building date: 1913
measures: $8 \frac{1}{4}$ x $3 \frac{7}{8}$ x $2 \frac{3}{8}$ inches
weight: 4 lb, 4 oz / 1.9 kg
donated: December 2004



- 32.2 number of bricks: 1
description mid brown RUF-TEX face brick, with black flecks - made at Claybank
source: St. Augustine’s School, Humboldt
building date: 1936 (burned 1976)
measures: 8 x $3 \frac{3}{4}$ x $2 \frac{1}{4}$ inches
weight: 4 lb, 8 oz / 2.1 kg
donated: December 2006



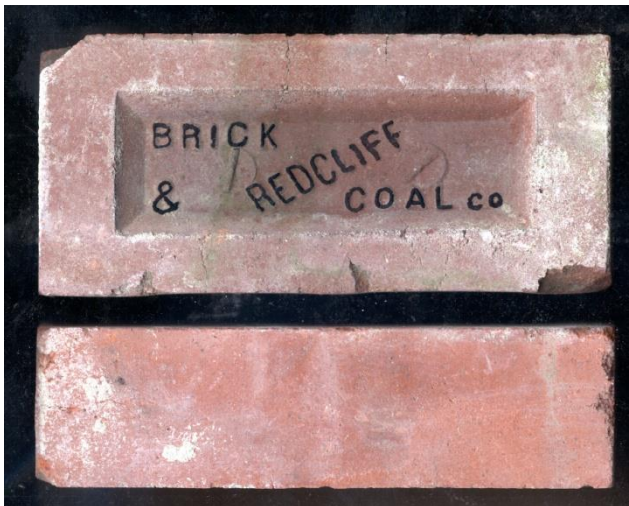
The Saskatchewan Brick Register

33. Donor: Paula Kotasek, Saskatoon, Saskatchewan

33.1 number of bricks: 1
description: grey sand-lime brick, with coarse surface and no frog or manufacturer markings
source: Imperial Oil Building, Saskatoon
building date: Unknown; demolished 2004
measures: $8\frac{1}{4}$ x 4 x $2\frac{3}{8}$ inches;
weight: 4 lb, 7 oz / 2.0 kg
donated: November 12, 2004



33.2 number of bricks: 2
description: brownish-red face brick with “**REDCLIFF Brick & Coal Co**” inscribed in the frog, but without “co” in one of the bricks.
source: Imperial Oil Building, Saskatoon
building date: Unknown; demolished 2004
measures: $8\frac{7}{16}$ x 4 x $2\frac{3}{8}$ inches;
weight: 4 lb, 13 oz / 2.2 kg
donated: November 12, 2004



The Saskatchewan Brick Register

34. Donor: Adrian Paton, Arcola, Saskatchewan

34.1 number of bricks: 1
description buff brick, smooth long sides, rough ends, with full length very faintly visible frog
source: Unknown
building date: Unknown
measures: $8\frac{3}{4}$ x 4 x $2\frac{3}{8}$ inches;
weight: 4 lb, 8 oz / 2.04 kg
donated: June 6, 2007



34.2 number of bricks: 1
description buff brick, smooth long sides, rough ends, with full length frog, about 1/8 inch deep
source: Unknown
building date: Unknown
measures: $8\frac{3}{4}$ x 4 x $2\frac{3}{8}$ inches;
ca. 4 lb, 8 oz / 2.2 kg
donated: June 6, 2007



The Saskatchewan Brick Register

- 34.3 number of bricks: 1
 description beige fire brick, without a frog, and the following letters imprinted:
 DEFCO – X CANADA
 source: Unknown; found in Arcola, Sask.
 building date: Unknown
 measures: 9 x 4 ½ x 2 ½ inches / 230 x 112 x 62 mm
 weight: 7 lb, 0 oz / 3.18 kg
 donated: 29 Feb. 2012



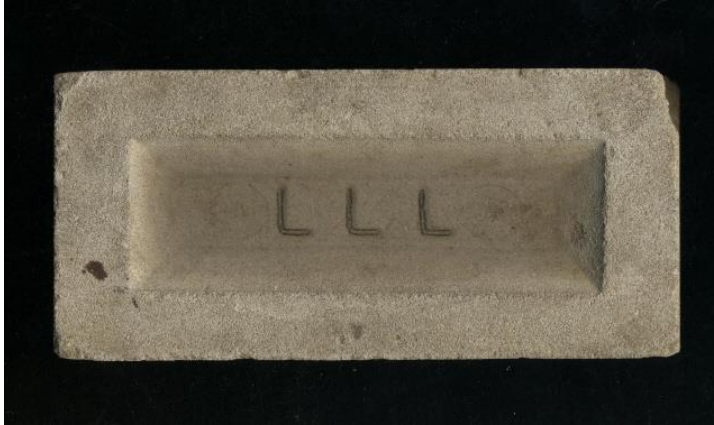
- 34.4 number of bricks: 2
 description beige fire brick, without a frog, and the following letters imprinted:
 BISON
 source: unknown; found in Arcola, Sask.
 building date: Unknown
 measures: 9 x 4 ½ x 2 ½ inches / 230 x 112 x 62 mm
 weight: 6 lb, 12 oz / 3.1 kg
 donated: 29 Feb. 2012



The Saskatchewan Brick Register

35. Donor: Gerry Bouvier, Compton Road, Regina, Saskatchewan

35.1 number of bricks: 1
description: grey sand lime brick with “**LLL**” in a deep frog.
source: unknown / not applicable – found in yard
building date: Unknown
measures: 8 x 3 ¾ x 2 ¼ inches;
weight: 4 lb, 7 oz / 2.0 kg
donated: April 2006



The Saskatchewan Brick Register

36. Donor: Dan Walker, Indian Head, Saskatchewan

36.1 number of bricks: 2 (a and b)
description: buff coloured, extruded brick (with curved brick cutting striation marks) with two irregular holes apparently pushed through the brick; coarse sides;
source: Unknown, possibly original Bell Farm – found on rock pile next to round barn
building date: Unknown, possibly ca. 1882
measures: (a) $8 \frac{3}{8}$ x $4 \frac{1}{8}$ x $2 \frac{1}{4}$ inches;
(b) 8 x 4 x $2 \frac{1}{8}$ inches;
weight: (a) 4 lb, 9 oz / 2.06 kg
(b) 4 lb / 1.85 kg
donated: August 16, 2006



The Saskatchewan Brick Register

37. Donor: Adam Gruscynski & Mavis Matheson, Regina, Saskatchewan

37.1 number of bricks: 5
description buff coloured fire bricks, inscribed with **ACME BRICK CO LAPERLA A**; manufactured in Perla, Arkansas, United States (some letters missing during production)
source: Unknown
building date: Unknown
measures: 9 x 4 ½ x 2 ½ inches;
weight: 7 lb, 8 oz / 3.4 kg
donated: summer 2006



The Saskatchewan Brick Register

38. Donor: Jim Chaplin; Fort Qu'Appelle, Saskatchewan

38.1 number of bricks: 1
description: mud-straw brick
source: Unknown, Edgeley area
building date: Unknown
measures: 15 x 7 ½ x 4 ½ inches
donated: summer 2006



The Saskatchewan Brick Register

39. Donor: Bernie Flaman, Regina, Saskatchewan

39.1 number of bricks: 2
description: buff coloured face brick, with the name **HEBRON, N D** inscribed in a shallow frog.
Manufacturer: Hebron Fire and Pressed Brick Company, Hebron, North Dakota, USA.
source: part of bricks at back of the Leader Building, Regina
building date: 1912
measures: $8 \frac{3}{8}$ x $4 \frac{1}{8}$ x $2 \frac{3}{8}$ inches / 213 x 104 x 60 mm
weight: 5 lb, 6 oz / 2.5 kg
donated: 20 February 2009



The Saskatchewan Brick Register

- 39.2 number of bricks: 2
 description red face brick, with no inscription or frog.
 source: YWCA Building, Moose Jaw, Sask.
 building date: 1912 ??? – burned in 2009
 measures: 7 $\frac{7}{8}$ x 3 $\frac{3}{4}$ x 2 $\frac{1}{4}$ inches / 200 x 95 x 56 mm
 weight: 5 lb, 0 oz / 2.21 kg
 donated: 6 November 2009



- 39.3 number of bricks: 1
 description orangey-red face brick, with the inscription in a deep frog: **P BUTTE**
 source: Black Block, Hamilton Street, Regina, Sask.
 building date: unknown
 measures: 7 $\frac{3}{4}$ x 4 x 2 $\frac{1}{4}$ inches / 197 x 102 x 56 mm
 weight: 4 lb, 0 oz / 1.8 kg
 donated: 18 April 2012



The Saskatchewan Brick Register

- 39.4 number of bricks: 2
description: I-XL Brick Sample Boxes – one for Extruded brick and one for dry pressed brick
source: not applicable.
building date: not applicable
measures: $3\frac{1}{4}$ x $2\frac{3}{8}$ x $\frac{3}{8}$ inches / 85 x 62 x 1 mm
weight: 4 oz / 100 gm
donated: 18 April 2012



- 39.5 number of bricks: 6
Description: orangey-beige face brick, with a moderately deep frog; no inscription; some with mortar attached
source: Prince Albert Penitentiary Warden's House. Prince Albert, Sask.
building date: 1913 – demolished in 2011
measures: $8\frac{1}{2}$ x $3\frac{7}{8}$ x $2\frac{1}{8}$ inches / 206 x 98 x 54 mm
Weight: 4 lb, 3 oz / 1.9 kg
donated: 7 Nov 2013



The Saskatchewan Brick Register

40. Donor: Larry Easton, Regina, Saskatchewan

- 40.1 number of bricks: 1
description: a light grey sand-lime brick, with the initials **W B** inscribed in a deep frog; date and name of manufacture unknown.
source: Unknown farmhouse chimney, Hardy, Sask. area
building date: Unknown
measures: $8 \frac{1}{8}$ x $3 \frac{3}{4}$ x $2 \frac{1}{4}$ inches;
donated: 3 June 2008



- 40.2 number of bricks: 2
description: a red sand-lime brick, with and without the initials **W B** inscribed in a deep frog; date and name of manufacture unknown.
source: chimney from William Horne farmhouse chimney, Killdeer, Sask. area
building date: Unknown
measures: $8 \frac{1}{8}$ x $3 \frac{3}{4}$ x $2 \frac{1}{4}$ inches;
donated: 7 May 2008

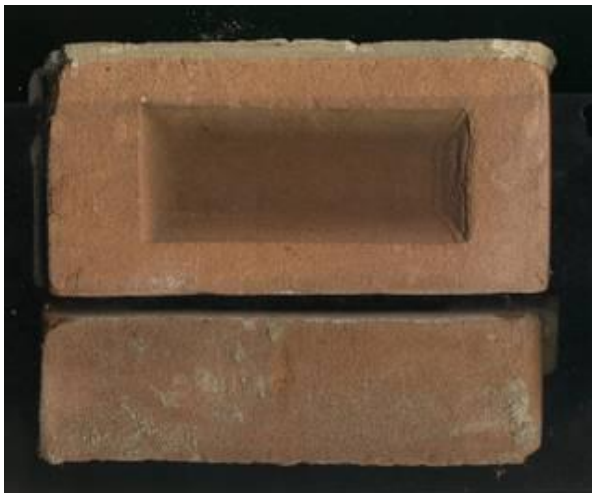


The Saskatchewan Brick Register

- 40.3 number of bricks: 2
 description a reddish-orange smooth face brick, with the following inscription in a shallow frog: **REDCLIFF BRICK & COAL**
 source: chimney from Scandia Lutheran Church, near Hendon, Saskatchewan
 building date: 1914
 measures: 8 ½ x 3 ⅞ x 2 ⅜ / inches / 215 x 100 x 62 mm
 weight: 5 lb, 4 oz / 2.35 kg
 donated: June 2013

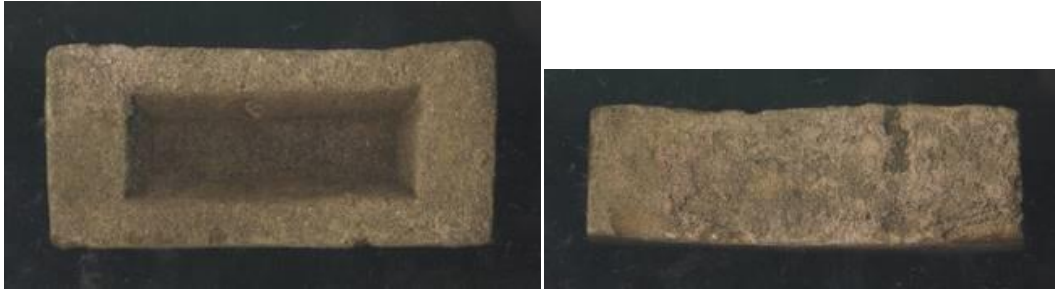


- 40.4 number of bricks: 2
 description a reddish-orange smooth face brick, with no inscription in the frog
 source: Doukhobor Prayer Home, SE of Kamsack, Saskatchewan
 building date: 1914
 measures: 8 x 3 ¾ x 2 ¼ / inches / 200 x 95 x 57 mm
 weight: 4 lb, 1 oz / 1.85 kg
 donated: 16 Oct. 2012



The Saskatchewan Brick Register

- 40.5 number of bricks: 1
description a beige rough face brick, with a deep frog, but no inscription
source: found near Doukhobor Prayer Home, SE of Kamsack, Saskatchewan
building date: unknown
measures: 7 ¼ x 3 ½ x 2 ¾ / inches / 185 x 88 x 60 mm
weight: 5 lb, 4 oz / 2.35 kg
donated: 16 October 2012



- 40.6 number of bricks: 1
description a dark red smooth face brick, with a deep split frog, but no inscription. Includes screw marks and a star in each section of the frog
source: chimney from Lutheran Church, Lakenheath, Saskatchewan
building date: 1925
measures: 8 ⅛ x 3 ⅝ x 2 ¼ / inches / 210 x 93 x 60 mm
weight: 5 lb, 2 oz / 2.35 kg
donated: June 2012



The Saskatchewan Brick Register

- 40.7 number of bricks: 2
description orangey-red smooth face brick, without a frog, but no inscription **ACP**
 Co impressed into the top (from Albert Clay products, Medicine Hat, Alberta)
source: found near Lakenheath, Saskatchewan
building date: unknown
measures: 8 ³/₈ x 4 ¹/₄ x 2 ¹/₂ / inches / 215 x 107 x 64 mm
weight: 5 lb, 12 oz / 2.6 kg
donated: 16 October 2012



- 40.8 number of bricks: 1
description a beige smooth face brick, with a deep frog, but no inscription
source: found near Lakenheath, Saskatchewan
building date: unknown
measures: 8 ¹/₄ x 3 ⁷/₈ x 2 ³/₈ / inches / 210 x 100 x 60 mm
weight: 4 lb, 4 oz / 1.9 kg
donated: 16 October 2012



The Saskatchewan Brick Register

- 40.9 number of bricks: 2
description: a beige smooth face brick, with a deep frog, but no inscription
source: chimney from St. Peter's (Spring Creek) Anglican Church, near Moosomin, Sask.
building date: 1889 – ca. 1904 – made at Moosomin Brick Plant
measures: $8\frac{3}{8}$ x 4 x $2\frac{1}{4}$ / inches / 213 x 103 x 57 mm
weight: 4 lb, 6 oz / 1.95 kg
donated: June 2013



- 40.10 number of bricks: 1
description: reddish brown smooth face brick, with no frog or inscription
source: Greenbrier School, near Riverhurst, Sask.
building date: 1909
measures: $8\frac{3}{8}$ x 4 x $2\frac{1}{4}$ / inches / 213 x 103 x 57 mm
weight: 5 lb / 2.3 kg
donated: 27 July 2015 – found on site by Larry Easton



The Saskatchewan Brick Register

- 40.11 number of bricks: 1
description reddish brown smooth face brick, with a frog and the following inscription: **REDCLIFF PREMIER BRICK CO. LTD.**
Source Glenarthy School, near Meyronne, Sask.; grid 611
building date: 1918
measures: $8 \frac{1}{8}$ x $3 \frac{5}{8}$ x $2 \frac{1}{4}$ / inches / 208 x 93 x 57 mm
weight: 5 lb, 10 oz / 2.1 kg
donated: 27 July 2015 – found on site by Larry Easton



- 40.12 number of bricks: 1
description pinkish-beige smooth face brick, with a frog and the following inscription: **A S Co**
source: house at Palmer, Sask.
building date: unknown
measures: $8 \frac{1}{4}$ x $3 \frac{3}{4}$ x $2 \frac{1}{4}$ / inches / 210 x 98 x 55 mm
weight: 3 lb, 12 oz / 1.7 kg
donated: 27 July 2015 – found on site by Larry Easton



The Saskatchewan Brick Register

- 40.13 number of bricks: 1
description beige face brick, with a frog and the following inscription: **P L A P**
source: Neidpath, Sask.
manufacturer: Portage la Prairie Brick Company, Manitoba
building date: unknown – town established in 1909
measures: $8\frac{1}{4}$ x $3\frac{3}{4}$ x $2\frac{1}{4}$ / inches / 210 x 98 x 55 mm
weight: 4 lb, 0 oz / 1.8 kg
donated: 5 June 2019 – found on site by Larry Easton



- 40.14 number of bricks: 1
description beige face brick, with a frog and the following inscription: **A S Co** – double pressed – letters off centre
source: Neidpath, Sask.
manufacturer: A. Snyder & Company, Portage la Prairie, Manitoba
building date: unknown – town established in 1909
measures: $8\frac{1}{4}$ x $3\frac{3}{4}$ x $2\frac{1}{4}$ / inches / 210 x 98 x 55 mm
weight: 3 lb, 14 oz / 1.7 kg
donated: 5 June 2019 – found on site by Larry Easton



The Saskatchewan Brick Register

- 40.15 number of bricks: 2 (“a” and “b”)
description: red and dark red face brick, with a ¼ inch shallow frog, but no inscription
source: Neidpath, Sask.
manufacturer: unknown
building date: unknown – town established in 1909
measures: (both) 8 ⅛ x 3 ⅞ x 2 ⅛ / inches / 207 x 97 x 55 mm
weight: (1) red - 5 lb, 3 oz / 2.35 kg
(2) dark red - 5 lb, 7 oz / 2.45 kg
donated: 5 June 2019 – found on site by Larry Easton



(a)



(b)

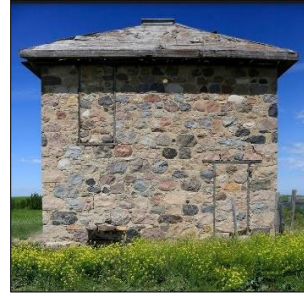
- 40.16 number of bricks: 1
description: orangey-red face brick, with neither frog nor inscription
source: Neidpath, Sask.
manufacturer: unknown
building date: unknown – town established in 1909
measures: 8 ⅛ x 3 ⅞ x 2 ¼ / inches / 207 x 97 x 57 mm
weight: 4 lb, 15 oz / 2.25 kg
donated: 5 June 2019 – found on site by Larry Easton



E-mail from Larry: Sept. 9, 2019: “The location was Neidpath southeast of Swift Current. A couple of red bricks came from one of two elevators, one being a pioneer. I don't recall for sure which of the two elevators but think it was one with no visible name. The **A S Co** and one brick with some masonry on are from what is left of a building foundation and someone in our group thought it was a from a bank in Neidpath. This place is all but a ghost town.”

The Saskatchewan Brick Register

- 40.17 number of bricks: 1
description: dark red face brick, **IXL** impressed into a deep frog
source: East of Indian Head (1.5 miles) – stone house chimney
manufacturer: Redcliff Pressed Brick Ltd / I-XL Industries Ltd, Redcliff, Alberta (1912-present)
building date: unknown – probably post 1900
measures: 8 x 3 ½ x 2 ¼ / inches / 202 x 90 x 57 mm
weight: 4 lb, 12 oz / 2.25 kg
donated: 20 July 2020 – found on site by Larry Easton



- 40.18 number of bricks: 1
description: orangey red filler brick, with curved striations from the cutting process a deep frog
source: Cottonwood rural school, near Pense, Sask.
manufacturer: unknown
building date: unknown
measures: 8 x 3 ¾ x 2 ¼ / inches / 202 x 95 x 57 mm
weight: 4 lb, 12 oz / 2.25 kg
donated: 15 May 2021 – found on site by Larry Easton



- 40.19 number of bricks: 1
description: beige face brick, with a deep frog and four brick press markings
source: Hauk Farm, north of Grenfell, Sask.
manufacturer: unknown
building date: unknown
measures: 8 x 3 ¾ x 2 ¼ / inches / 202 x 95 x 57 mm
weight: 4 lb, 12 oz / 2.25 kg
donated: 27 Oct. 2022 – found on site by Larry Easton

The Saskatchewan Brick Register



40.20	number of bricks:	2 (a and b)
	description	red face brick, with a moderately deep frog and the Letters IXL inscribed in a vertical pattern
	source:	Mount Joy School, Glasnevin, Sask.
	manufacturer:	IXL Industries, Redcliff, Alberta
	building date:	1912
	measures:	8 x 3 ¾ x 2 ¼ / inches / 202 x 95 x 57 mm
	weight:	5 lb, 0 oz / 2.3 kg
	donated:	30 Aug. 2021 – found on site by Larry Easton



The Saskatchewan Brick Register

41. Donor: Leigh Robinson, Arcola, Saskatchewan

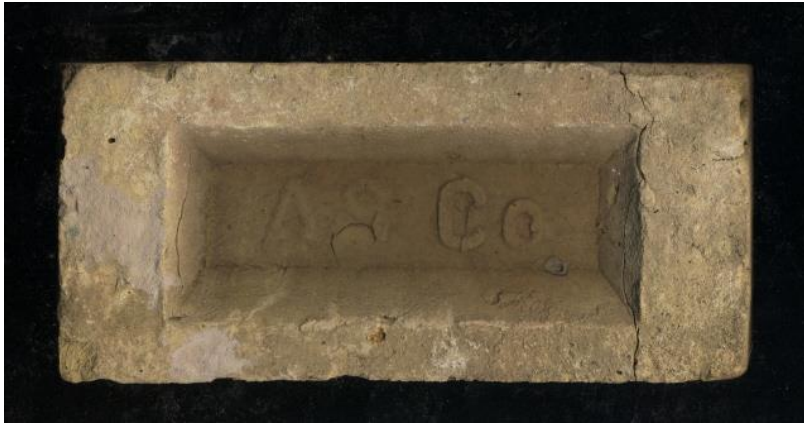
41.1 number of bricks: 3
description a light grey cement brick, with no inscription, but does include three pyramids on the face; manufactured in Manor, Saskatchewan by the Manor Cement Brick Works, operated by William Robinson. Note – not all bricks have the pyramids, some are just rectangular
source: St. Margaret's Anglican Church, Manor
building date: 1906
measures: 8 x 4 x 2 ¼ inches
donated: Summer 2008



The Saskatchewan Brick Register

42. Donor: Abe and Bjorg Carlson, Morinville, Alberta

42.1 number of bricks: 1
description: a light buff, with the inscription “**A S Co**” in a deep frog (1/2 inch);
manufactured at Portage la Prairie, Manitoba by A. Snyder & Company
source: Benito School, Manitoba (built by bricklayers from Winnipeg; 12 room school)
building date: 1915; demolished ca. 1974 or 1992
measures: 8 x 3 ¾ x 2 ⅛ inches
donated: 19 June 2008



The Saskatchewan Brick Register

43. Donor: Carey Isaak, Regina, Saskatchewan

- 43.1 number of bricks: 1
description: a light orangey buff, with the inscription “**P BUTTE**” in a moderately deep frog (3/8 inch); manufactured at Pilot Butte, Saskatchewan by Pilot Butte Brick Company
source: Not Applicable; found in Isaak back yard
building date: brick manufactured from: 1884 - ca. 1916
measures: 7 ½ x 4 x 2 ½ inches / 195 x 100 x 62 mm
weight: 3 lb, 10 oz / 1.62 kg
donated: _____ 2010



- 43.2 number of bricks: 2
description: a red smooth-faced face brick, with the inscription “**HY - TEX**” in a shallow frog (1/4 inch); manufactured by Hydraulic Press Brick Company, Missouri
source: Not Applicable; found in Isaak back yard
building date: brick manufactured from: 1913-1935
measures: 7 ¾ x 3 ¼ x 2 ¼ inches / 195 x 85 x 57 mm
weight: 4 lb, 0 oz / 1.8 kg
donated: _____ 2010



The Saskatchewan Brick Register

- 43.3 number of bricks: 1
description a pinkish smooth-faced brick, with the inscription **W B** in a deep frog (½ inch); manufacturer unknown
source: Not Applicable; found in Isaak back yard
building date: unknown
measures: 8 x 3 ¾ x 2 ⅛ inches / 216 x 93 x 55 mm
weight: 3 lb, 12 oz / 1.7 kg
donated: _____ 2010



- 43.4 number of bricks: 1
description a light brown rough-faced brick, with a continuous frog, and no inscription; manufacturer unknown; some mortar in the frog.
source: Not Applicable; found in Isaak back yard
building date: unknown
measures: 7 ½ x 3 ½ x 2 ⅜ inches / 190 x 90 x 56 mm
weight: 3 lb, 7 oz / 1.55 kg
donated: _____ 2010



The Saskatchewan Brick Register

- 43.5 number of bricks: 1
description an orange smooth-faced brick, with a continuous, shallow curved frog, and no inscription; manufacturer unknown.
source: Not Applicable; found in Isaak back yard
building date: unknown
measures: 8 x 3 $\frac{3}{4}$ x 2 $\frac{1}{4}$ inches / 200 x 95 x 56 mm
weight: 3 lb, 7 oz / 1.55 kg
donated: _____ 2010



- 43.6 number of bricks: 1
description a buff ruff textured-faced brick, with three holes, and the inscription: **SASKATCHEWAN CLAY PRODUCTS ESTEVAN CANADA.**
source: Not Applicable; found in Regina's Warehouse District
building date: unknown
measures: 8 x 3 $\frac{3}{4}$ x 2 $\frac{1}{4}$ inches / 200 x 95 x 56 mm
weight: 4 lb / 1.8 kg
donated: 8 February 2017



The Saskatchewan Brick Register

- 43.7 number of bricks: 1
description a buff fire brick fragment with portions of a faint inscription:
 OC ----- and **MAD** _____
source: Whitehorse, Yukon near Military Base Laundry Building from World War
 II Alaska Highway construction
building date: unknown – c.1942
measures: 4 $\frac{3}{4}$ (of 9) x 4 $\frac{1}{4}$ x 2 $\frac{1}{2}$ inches / 120 (of 227) x 110 x 63 mm
weight: 3 lb, 11 oz / 1.7 kg
donated: 28 August 2019



- 43.8 number of bricks: 1
description a red face brick – heavily damaged – without any manufacturing marks
source: Whitehorse, Yukon near Military Base Laundry Building from World War
 II Alaska Highway construction
building date: unknown – c.1942
measures: 8 x 3 $\frac{3}{4}$ x 2 $\frac{1}{4}$ inches / 210 x 93 x 56 mm
weight: 4 lb, 8 oz / 2.1 kg
donated: 28 August 2019



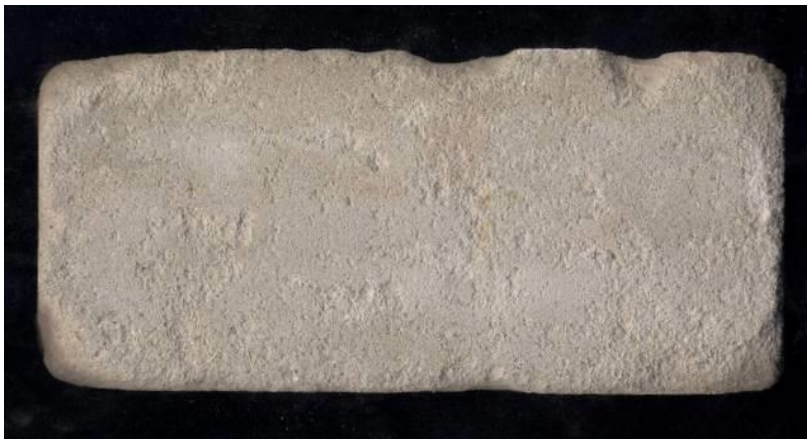
The Saskatchewan Brick Register

44. Donor: Rick Moats, Regina, Saskatchewan

- 44.1 number of bricks: 1
description: a light orangey red, with the inscription “**I-XL**” in a deep frog (3/8 inch);
manufactured at Medicine Hat, Alberta by I-XL Industries
source: Not Applicable; found in Moats’s back yard
building date: brick manufactured from: post 1912
measures: $7 \frac{7}{8}$ x $3 \frac{5}{8}$ x $2 \frac{1}{4}$ inches / 200 x 92 x 55 mm
weight: 4 lb, 10 oz / 2.1 kg
donated: 22 June, 2009



- 44.2 number of bricks: 1
description: a grey, sand lime brick with no inscription or manufacturer’s markings
source: Not Applicable; found in Moats’s back yard
building date: unknown
measures: $8 \frac{3}{4}$ x $4 \frac{1}{8}$ x $2 \frac{7}{16}$ inches / 222 x 103 x 63 mm
weight: 5 lb, 7 oz / 2.41 kg
donated: 22 June 2009



The Saskatchewan Brick Register

- 44.3 number of bricks: 1
description a buff brick, with “**H.S**” imprinted in a ½ inch deep frog manufactured by H. Stephens Company, Manitoba, possibly at their Portage La Prairie plant.
source: Not Applicable; found in Moats’s back yard
building date: brick manufactured from: ca. 1892 – ca. 1898
measures: 8 ⅛ x 3 13/16 x 2 ¼ inches / 207 x 97 x 56 mm
weight: 3 lb, 9 oz / 1.61 kg
donated: 22 June 2009



- 44.4 number of bricks: 1
description a buff brick, with “**HEBRON N D**” imprinted in a ¼ inch deep frog manufactured by Hebron Fire and Pressed Brick Company, Hebron, North Dakota.
source: Not Applicable; found in Moats’s back yard
building date: brick manufactured from: after 1904
measures: 8 3/8 x 4 1/16 x 2 3/8 inches / 212 x 103 x 60 mm
weight: 5 lb, 6 oz / 2.4 kg
donated: 22 June 2009



The Saskatchewan Brick Register

- 44.5 number of bricks: 1
description a buff filler brick, with no inscription or frog; made by extruded process with wire cut lines evident
source: Presutti's Restaurant, 1750 Lorne St. Regina (former Stephen's Paint Warehouse)
building date: brick manufactured from: unknown
measures: 8 1/8 x 3 3/4 x 2 1/4 inches / 207 x 95 x 56 mm
weight: 3 lb, 15 oz / 1.75 kg
donated: 22 June 2009

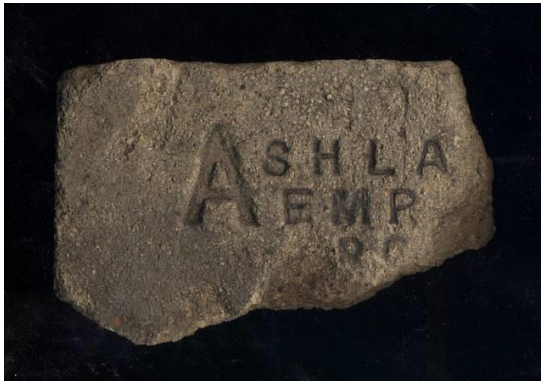


- 44.6 number of bricks: 1
description a buff brick, with no inscription in a 1/2 inch deep frog; no manufacturer indicated.
source: St. Paul's Anglican Church, Regina
building date: 1894
measures: 8 5/8 x 3 7/8 x 2 3/8 inches / 220 x 100 x 59 mm
weight: 4 lb, 9 oz / 2.1 kg
donated: 22 June 2009



The Saskatchewan Brick Register

- 44.7 number of bricks: 1
description a buff fire brick, with part of the following inscription impressed into the top: “**ASHLAND EMPIRE CROWN**”
source: Found by Rick Moats in Regina, Sask.
building date: Made by: Ashland Fire Brick Company, from Kentucky, between 1921 and 1927 or by North American Refractories Co., Kentucky, between 1930 and 1942
measures: 6 ¼ x 4 ¼ x 2 ¾ inches / 160 x 105 x 61 mm
weight: 3 lb, 7 oz / 1.55 kg
donated: 22 June 2009



- 44.8 number of bricks: 1
description a orangey red smooth face brick, with no frog or inscription
source: Sacred Heart Academy, 13th Avenue, Regina, Sask.
building date: 1913 & 1926
measures: 8 ¼ x 4 x 2 ¼ inches / 210 x 103 x 58 mm
Weight: 5 lb, 3 oz / 2.35 kg
donated: 22 September 2009

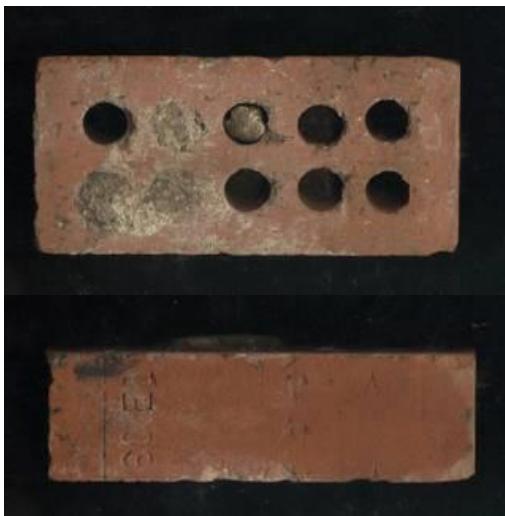


The Saskatchewan Brick Register

- 44.9 number of bricks: 2
description: a beige smooth face brick, with no frog; has three 1 inch diameter holes and the following inscription on the back: **SASKATCHEWAN CLAY PRODUCTS ESTEVAN – SASK - CANADA**
source: unknown, found at 2219 Smith Street, Regina, Sask.
building date: unknown
measures: 8 ⅛ x 3 ¾ x 2 ¼ inches / 205 x 95 x 58 mm
weight: 4 lb. 0 oz / 1.8 kg
donated: 26 April 2012



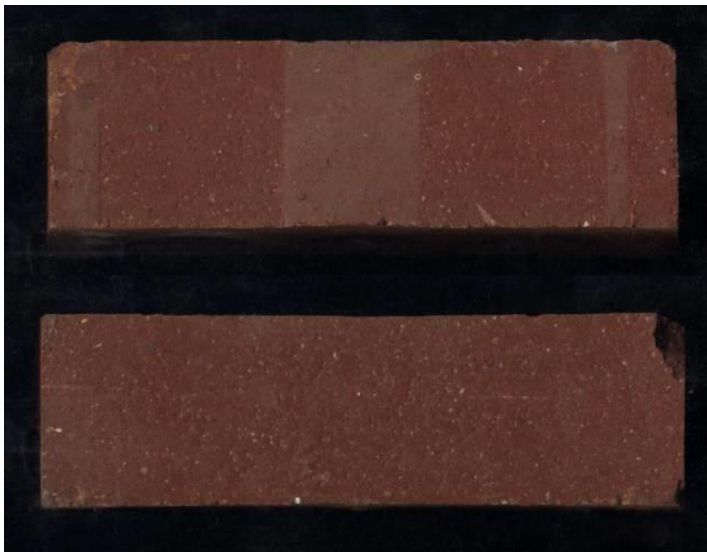
- 44.10 number of bricks: 1
description: an orangey-red smooth face brick, with 10 holes instead of a frog. Has the following inscription on the back: **60 E 1**, and possibly some letters “A”
source: Black Block, Hamilton Street, Regina, Sask.
building date: unknown
measures: 7 ⅜ x 3 ½ x 2 ¼ inches / 190 x 90 x 58 mm
weight: 4 lb. 0 oz / 1.8 kg
donated: 2 April 1912



The Saskatchewan Brick Register

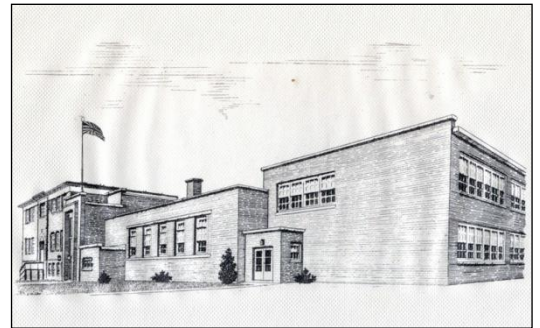
45. Donor: Tiemen Korvemaker, Morin Heights, Quebec

45.1 number of bricks: 1
description: a reddish-brown face brick, with a smooth face, three holes, and the following text impressed into the top **I-XL CANADA**, manufactured by I -XL Industries, Medicine Hat, Alberta. The back shows marks of where other bricks were stacked.
source: Royal George High School, Greenfield Park, Quebec
building date: Brick replaced in 2009
measures: 7 ¼ x 3 ½ x 2 ⅞ inches / 186 x 88 x 54 mm
weight: 3 lb, 10 oz / 1.65 kg
donated: November 2009



The Saskatchewan Brick Register

- 45.2 number of bricks: 2
description a reddish-brown face brick, with a smooth face and the following text impressed into top “**I-XL CANADA**”, manufactured by I -XL Industries, Medicine Hat, Alberta. The back shows marks of where other bricks were stacked. This mortar still attached.
- source: Royal George High School, Greenfield Park, Quebec
building date: Brick replaced in 2009
measures: 7 x 3 ½ x 2 ¼ inches / 201 x 92 x 56 mm
weight: 6 lb, 0 oz / 2.8 kg (including mortar)
donated: November 2009



The Saskatchewan Brick Register

46. Donor: Margaret Hryniuk, Regina, Saskatchewan

46.1 number of bricks: 1
description: a buff smooth face brick, with the inscription hand applied into a ½ inch deep frog: **A S Co.** Manufactured by A. Snyder and Company, Portage La Prairie, Manitoba
source: Swift Creek School, between Arcola and Carlyle, Saskatchewan
building date: 1908
measures: 8 ⅜ x 3 ⅞ x 2 ¼ inches / 213 x 98 x 57 mm
weight: 4 lb, 4 oz / 1.9 kg
donated: June 2009



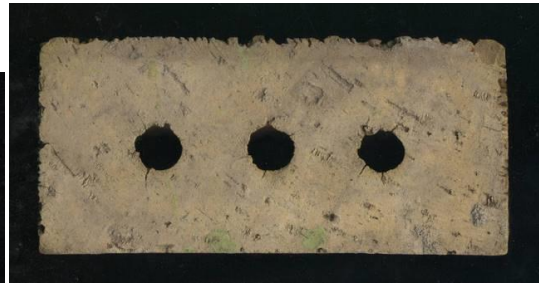
46.2 number of bricks: 1
description: a buff smooth face brick, with the inscription hand applied into a ½ inch deep frog: "**R B**". Manufacturer unknown
source: found in Wolseley dump
building date: Not Applicable
measures: 8 ⅜ x 3 ¾ x 2 ¼ inches / 205 x 958 x 57 mm
weight: 3 lb, 9 oz / 1.65 kg
donated: June 15, 2016



The Saskatchewan Brick Register

47. Donor: Kathy Burianyk, Regina, Saskatchewan

47.1 number of bricks: 1
description: a buff ruff-texture extruded face brick, with three small round holes.
manufacturer: unknown.
source: Unknown, found in yard of Kathy Burianyk
building date: unknown
measures: 8 x 3 $\frac{3}{4}$ x 2 $\frac{1}{8}$ inches / 203 x 95 x 55 mm
weight: 4 lb, 0 oz / 1.8 kg
donated: 25 July 2009



47.2 number of bricks: 2 (A & B)
description: a red rough-textured face brick, with 10 small round holes.
manufacturer: unknown.
source: Unknown, found in yard of Kathy Burianyk
building date: unknown
measures: 7 $\frac{7}{8}$ x 3 $\frac{3}{4}$ x 2 $\frac{3}{8}$ inches / 202 x 95 x 56 mm
weight: 4 lb, 0 oz / 1.8 kg
donated: 25 July 2009



The Saskatchewan Brick Register

- 47.3 number of bricks: 2 (A & B)
 description a red rough-textured face brick, with no frog or other identification.
 Manufacturer: unknown.
 source: Unknown, found in yard of Kathy Burianyk
 building date: unknown
 measures: 8 ¼ x 3 15/16 x 2 ¼ inches / 210 x 100 x 60 mm
 weight: 4 lb, 6 oz / 2 kg
 donated: 25 July 2009

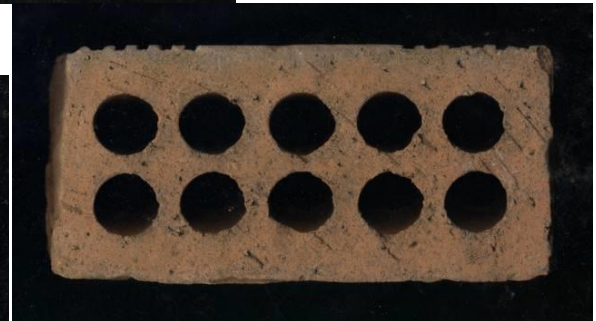


- 47.4 number of bricks: 1
 description a red smooth-textured face brick, with no the inscription **B & C** in a ½ inch deep frog.
 Manufacturer: Redcliff Brick and Coal Company, Redcliff, Alberta
 source: Unknown, found in yard of Kathy Burianyk
 building date: unknown; made between 1907 and 1949
 measures: 7 ¾ x 3 ¾ x 2 ¼ inches / 198 x 95 x 60 mm
 weight: 4 lb, 4 oz / 1.9 kg
 donated: 25 July 2009



The Saskatchewan Brick Register

- 47.5 number of bricks: 1
description: an orangey red rough-textured face brick, with 10 round holes, with the inscription : “**WESCLAY REGINA SASK CANADA B 191**” pressed into the back of the brick.
source: Unknown, found in yard of Kathy Burianyk
building date: unknown; made between 1907 and 1949
measures: 7 ½ x 3 ¾ x 2 ⅜ inches / 192 x 94 x 56 mm
weight: 3 lb, 1 oz / 1.4 kg
donated: 25 July 2009



- 47.6 number of bricks: 2
description: a red smooth-textured face brick, with the following inscription in the frog : “**REDCLIFF PREMIER BRICK Co LTD**” pressed into the ¼ inch deep frog; made in Redcliff, Alberta.
source: One from Carmichael United Church, 14th Avenue, Regina; the other from a fireplace
building date: unknown; made between 1907 and 1949
measures: 8 x 3 ⅝ x 2 ¼ inches / 204 x 93 x 57 mm
weight: 4 lb, 10 oz / 2.1 kg
donated: 25 July 2009



The Saskatchewan Brick Register

- 47.7 number of bricks: 1
description a dark brown rough-textured face brick, with no frog or manufacturer's inscription
source: Unknown, found in yard of Kathy Burianyk
building date: unknown
measures: 8 x 3 ⁵/₈ x 2 ¹/₄ inches / 204 x 93 x 57 mm
weight: 5 lb, 5 oz / 2.39 kg
donated: 25 July 2009



- 47.8 number of bricks: 2 (A & B)
description a buff smooth-textured face brick, with the following inscription impressed into the top : **I-XL CANADA**, made at Medicine Hat, Alberta. The "I" is actually a #1, and on one brick is set in backwards.
source: Unknown, found in yard of Kathy Burianyk
building date: unknown
measures: 7 ⁹/₁₆ x 3 ¹/₂ x 2 ¹/₄ inches / 193 x 90 x 57 mm
weight: 4 lb, 0 oz / 1.8 kg
donated: 25 July 2009



The Saskatchewan Brick Register

48. Donor: Ivan Saunders, Regina, Sask.

48.1 number of bricks: 1
description: a reddish-brown smooth face brick, no frog; inscription on back: **MADE IN CANADA CHIPMAN MADE IN CANADA**
source: Unknown, made in Chipman, New Brunswick
building date: ca. 1928 – 1990
measures: $7 \frac{7}{8}$ x $3 \frac{3}{4}$ x $2 \frac{1}{8}$ inches / 198 x 95 x 55 mm
weight: 5 lb, 6 oz / 2.48 kg
donated: May 2013



The Saskatchewan Brick Register

49. Donor: Terry Sinclair, Regina, Sask.

49.1 number of bricks: 3
description: a reddish-brown rough textured face brick, no frog; inscription on back:
COOKSVILLE PATENTED 1926
source: Unknown, made by Cooksville Brick & Tile Company, in Mississauga, Ontario
building date: Unknown – post 1926
measures: $8 \frac{3}{8}$ x 4 x $2 \frac{3}{8}$ inches / 213 x 101 x 61 mm
weight: 6 lb / 2.7 kg
donated: May 2015



Description: The Cooksville Brick and Tile Company went through several name changes. It was built in 1912 as National Brick Company, and then became Cooksville Shale and Brick Company in 1922. In 1924 it became the Cooksville Brick Company, then Cooksville Brick and Tile, and then Cooksville La Prairie Brick Company. In 1953 it was acquired by Domtar (Clay Division). The operation included its own rail system and trains to transport materials for making the bricks. This photo shows the interior of the factory. At one time the Cooksville Brick Company was the largest manufacturer of bricks in Canada. It closed down in 1970. The original photograph is in the William Perkins Bull Collection at the Region of Peel Archives.

Agency: Mississauga Library System

Source:

http://www.mississauga.ca/portal/residents/allhistoricimages?paf_gear_id=13400033&imageId=4600084n&index=0&returnUrl=%2Fportal%2Fresidents%2Fallhistoricimages

The Saskatchewan Brick Register

50. Donor: Don Lammle, Drinkwater, Sask.

50.1 number of bricks: 2
description: a pale yellow smooth face brick, with a frog, but no inscription
source: Willett Residence, Drinkwater, Sask. - chimney
building date: ca. 1906
measures: $8 \frac{3}{8}$ x 4 x $2 \frac{1}{4}$ inches / 213 x 101 x 56 mm
weight: 4 lb / 1.8 kg
donated: 28 June 2015



50.2 number of bricks: 1
description: orangey-red smooth face brick, without a frog or any inscription
source: Willett Residence, Drinkwater, Sask. - quoins
building date: ca. 1906
measures: $8 \frac{1}{4}$ x 4 x $2 \frac{3}{8}$ inches / 208 x 101 x 60 mm
weight: 5 lb / 2.2 kg
donated: 28 June 2015



The Saskatchewan Brick Register

51. Donor: P3Architecture Partnership, Regina, Sask.

- 51.1 number of bricks: 5
description: red, smooth paver brick with no frog, but imprinted with **DIAMOND**, and very faint impression of **HYDRAULIC PRESSED BRICK** under the word DIAMOND on some bricks
source: College Building, University of Regina
building date: 1911-12
measures: $8\frac{1}{4}$ x $3\frac{3}{4}$ x $2\frac{1}{2}$ inches / 210 x 95 x 60 mm
weight: 6 lb, 9 oz / 3.0 kg
donated: October 27, 2015 – removed from the building by Wyatt Eckert of P3A



- 51.2 number of bricks: 1
description: rough-textured face brick with no frog or any manufacturer's impressions, with black flecks and vertical striations on the face and sides – known as “Ruf-ex” by the manufacturer – the Claybank Brick Plant
source: Darke Hall, University of Regina
building date: 1928-29
measures: $8\frac{1}{4}$ x 4 x $2\frac{3}{8}$ inches / 210 x 97 x 60 mm
weight: 5 lb, 8 oz / 2.5 kg
donated: October 27, 2015 – removed from the building by Wyatt Eckert of P3A



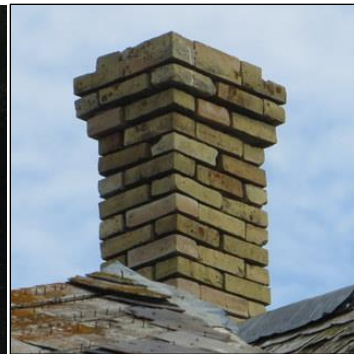
The Saskatchewan Brick Register

52. Donor: Velma Foster, Paynton, Sask.

- 52.1 number of bricks: 4
description: pale yellow hand-moulded face brick with no frog, or impressions
source: Alex Sayer farmhouse, Bresaylor - chimney
building date: ca. 1884
measures: 8 x 3 $\frac{3}{4}$ x 2 $\frac{1}{4}$ inches / 205 x 96 x 55 mm
weight: 4 lb, 2 oz / 1.9 kg
donated: September 28, , 2015 – found at the site



- 52.2 number of bricks: 1
description: pale yellow machine-made face brick with a frog, but no inscriptions; include 5 small knobs in the frog: 2 at each end and one in the centre
source: Alex Sayer farmhouse, Bresaylor – chimney – might be a repair brick
building date: ca. 1884
measures: 8 $\frac{3}{8}$ x 3 $\frac{3}{4}$ x 2 $\frac{3}{8}$ inches / 210 x 95 x 58 mm
weight: 4 lb, 5 oz / 1.95 kg
donated: September 28, , 2015 – found at the site



The Saskatchewan Brick Register

53. Donor: John Oystryk, Canora, Sask.

53.1 number of bricks: 5 (kept 2)
description: pale yellow hand-moulded face brick with **GP** inscribed in a deep frog – probably made at Gilbert Plains, Manitoba.
source: Pelly (Midhurst) School - addition
building date: 1922-23 (original section built in 1912) – burned 2015
measures: 8 ¼ x 3 ½ x 2 ¼ inches / 209 x 95 x 58 mm
weight: from 3 lb, 12 oz / 1.7 kg to 4 lb, 1 oz / 1.83 kg
donated: 23 August 2016 – removed from ruins of the school



The Saskatchewan Brick Register

53.2	number of bricks:	6 (kept 2)
	description	pale yellow hand-moulded face brick with A S Co inscribed in a deep frog; made by A. Snyder and Co, at their plant at Gilbert Plains or at Portage La Prairie (One of the bricks has lettering more crude than the rest)
	source:	Pelly (Midhurst) School – original section
	building date:	1912 (addition in 1922-23 – burned in 2015)
	measures:	8 ³ / ₈ x 3 ³ / ₄ x 2 ¹ / ₄ inches / 212 x 97 x 58 mm
	weight:	varies from: 3 lb, 11 oz / 1.69 kg to 3 lb, 15 oz / 1.75 kg
	donated:	23 August 2016 – removed from ruins of the school



The Saskatchewan Brick Register

54. Donor: Ryan Smith, Balgonie, Sask.

- 54.1 number of bricks: 2
description: orangey-red interlocking bricks (placed over buried high voltage power cables for safety purposes), with the following inscription imprinted into the top: **DANGER BALDWIN REG DE8 C 8 58 ELECTRICITY**
<http://www.scottishbrickhistory.co.uk/category/electric-cable-covers/>
manufacturer: A terracotta cover for electric cables, made by H. J Baldwin Brickworks, Bunny, Northamptonshire, United Kingdom.
source: found at 1960 Albert Street, Regina, Sask. in 1985
building date: unknown; date of manufacture might be 1958 or 1959
measures: 12 x 9 x 1 ¾-2 ½ inches / 305 x 228 x 44-63 mm
weight: 13 lbs / 5.89 kg
donated: 25 August 2017



- 54.2 number of bricks: 1
description: dark orangey-red rough textured face brick without any holes or frog, with one corner damaged; and with the following inscription on the back: **BELD E N CANTON OH 10 USA 4-41**
source: from yard in Whitmore Park neighbourhood, Regina, Sask
manufacturer: Belden Brick Company, Canton, Ohio, USA –
http://www.beldenbrick.com/bb_history_2008/
building date: unknown / not applicable
measures: 8 x 3 ¾ x 2 ¼ inches / 203 x 94 x 58 mm
weight: 5 lb, 8 oz / 2.45 kg
donated: 25 August 2017



The Saskatchewan Brick Register

- 54.3 number of bricks: 2
description: dark brown smooth textured paving brick without any holes or frog; and with the following inscription impressed onto the top: **D-MOINES**, with lines on all four sides of the name. The thinner brick appears to have been sawn, perhaps for use as a face brick.
source: from Sask. Science Centre area, SaskPower region, Regina, Sask
manufacturer: Des Moines Brick Company (?), Des Moines, Iowa, USA
building date: possibly 1914 - for Regina Power House
measures: 8 ¼ x 3 ¾ x 2 ½ inches / 210 x 97 x 63 mm; and
8 ¼ x 3 ¾ x 3 ¼ inches / 210 x 97 x 83 mm
weight: 6 lb, 11 oz / 3.2 kg and 9 lb, 6 oz / 4.25 kg
donated: 5 October 2018

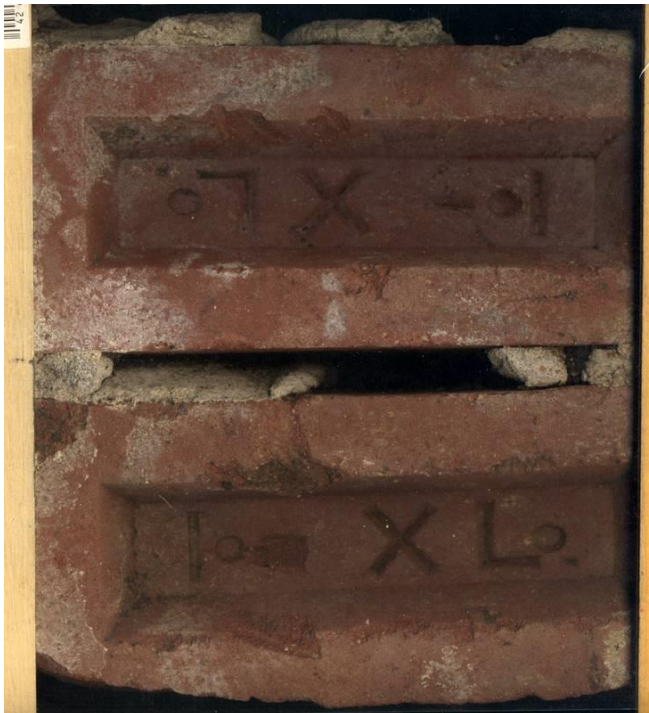


- 54.4 number of bricks: 2
description: dark brown smooth textured paving brick without any holes or frog; and with the following inscription impressed onto the top: **Des Moines**, with raised wide lines above and below the name.
source: from Sask. Science Centre area, SaskPower region, Regina, Sask
manufacturer: Des Moines Brick Company (?), Des Moines, Iowa, USA
building date: possibly 1914 – for Regina Power House
measures: 8 ¼ x 3 ¾ x 3 ⅜ inches / 210 x 95 x 85 mm
weight: 9 lb, 2 oz / 4.15 kg
donated: 5 October 2018

The Saskatchewan Brick Register



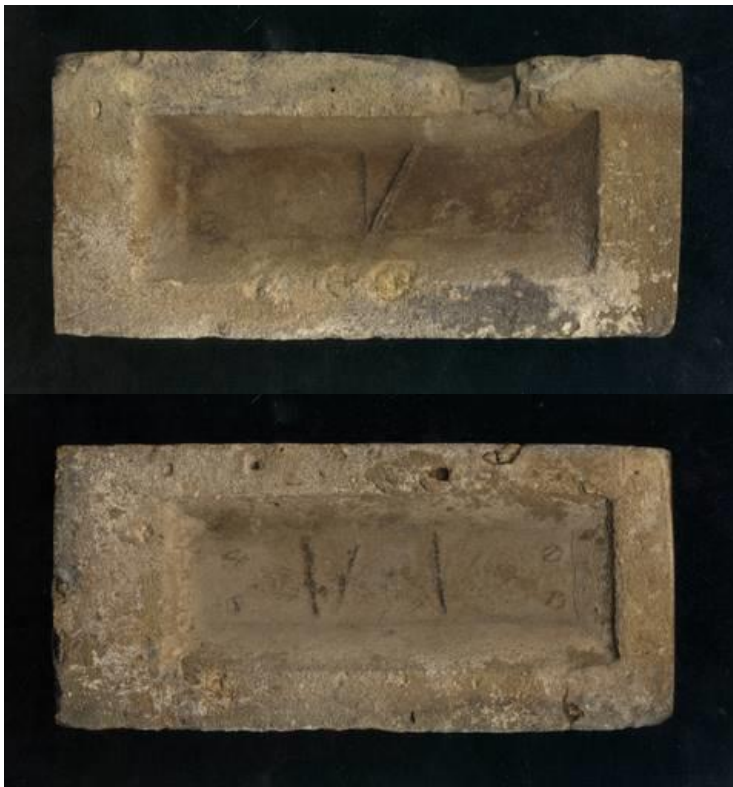
- 54.5 number of bricks: 2
description: dark red smooth face brick with the following inscription impressed onto a ½ inch deep frog: **I-XL**; includes extensive quantity of mortar on all sides except the frog side; plus a hyphen between the “I” and the “X”.
source: from Sask. Science Centre area, SaskPower region, Regina, Sask.
manufacturer: I-XL Industries, Medicine Hat, Alberta
building date: possibly 1914 – for Regina Power House
measures: 8 ¼ x 3 ¾ x 2 ¼ inches / 210 x 95 x 60 mm (per brick)
weight: over 11 lb, 0 oz / 4.8 kg (2 bricks plus mortar)
donated: 5 October 2018



The Saskatchewan Brick Register

55. Donor: Dan Flegel, Claybank, Sask.

55.1 number of bricks: 2
description: beige face bricks with a deep frog, and the Roman Numerals “V” and “VI” inscribed in them.
manufacturer: Unknown
source: found in Schiml farmyard east of the Hillcrest Cemetery, north of Avonlea, Sask. – 28 Nov. 2017
building date: unknown
measures: 8 x 3 $\frac{3}{4}$ x 2 $\frac{3}{8}$ inches / 205 x 98 x 55 mm
weight: 3 lbs. 8 oz. / 1.6 kg
donated: 1 September 2018



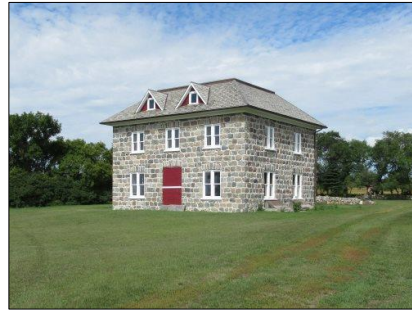
The Saskatchewan Brick Register

56. Donor: Rick Krehbiel, Kisbey, Sask.

56.1 number of bricks: 2
description: beige face brick with a ½ inch deep frog, and the following inscription:
SNYDER
manufacturer: Andrew Snyder, Portage la Prairie, Manitoba
source: Chimney from “Smithfield” farm , NW of Arcola
building date: 1903
measures: 8 ¼ x 3 ¾ x 2 ¼ inches / 205 x 98 x 57 mm
weight: 3 lbs. 8 oz. / 1.6 kg
donated: 30 August 2019



56.1.a



56.1.b

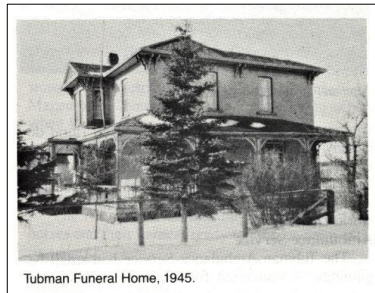
56.2 number of bricks: 1
description: beige face brick with a very shallow full length curved frog
manufacturer: Arcola Brick Yard
source: from “Smithfield” farm , NW of Arcola
building date: 1903
measures: 8 x 3 ¾ x 2 ¼ inches / 205 x 98 x 57 mm
weight: 3 lbs. 15 oz. / 1.8 kg
donated: 24 Oct. 2021



The Saskatchewan Brick Register

57. Donor: Denton Keating, Wolseley, Sask.

57.1 number of bricks: 2 (a) and (b)
 description: beige face brick with a $\frac{3}{4}$ inch deep frog, and very rough bottom
 manufacturer: possibly Magee & Thompson / Wolseley Brick Company
 source: Ellis / Tubman house, 210 Clause Street, Wolseley, Sask.
 building date: 1903
 measures: (a) $8\frac{3}{4}$ x $3\frac{7}{8}$ x $2\frac{5}{8}$ inches / 220 x 100 x 68 mm
 (b) 9 x $3\frac{1}{2}$ x $2\frac{1}{2}$ inches / 222 x 89 x 62 mm
 weight: (a) 5 lbs. 1 oz. / 2.3 kg
 (b) 4 lbs. 8 oz. / 2.05 kg
 donated: 10 September 2019



Brick (a) - face, frog and bottom



Brick (b) – face, frog and bottom

The Saskatchewan Brick Register

58. Donor: Yorkton Brick Mill Heritage Society, Yorkton, Sask.

- 58.1 number of bricks: 1
description: Beige fire brick, with the following inscription: **EVANS & HOWARD ST. LOUIS**, with lower left corner missing
source: Smith Brick Mill, Yorkton, Sask.
manufacturer: Evans & Howard, ST. Louis., Missouri
building date: 1899-1900
measures: $8 \frac{7}{8}$ x $4 \frac{1}{4}$ x $2 \frac{3}{8}$ inches / 225 x 110 x 60 mm
weight: 6 lb, 8 oz / 2.9 kg
donated: 9 May 2019 – found on site brick pile



- 58.2 number of bricks: 1
description: Beige fire brick, with the following inscription: **CLAYBANK . D P.**
source: Smith Brick Mill, Yorkton, Sask.
manufacturer: Dominion Fire Brick and Clay Products Ltd, Claybank, Sask.
building date: 1899-1900
measures: $8 \frac{3}{4}$ x $4 \frac{1}{4}$ x $2 \frac{3}{8}$ inches / 220 x 110 x 60 mm
weight: 5 lb, 8 oz / 2.6 kg
donated: 9 May 2019 – found on site brick pile



The Saskatchewan Brick Register

- 58.3 number of bricks: 2 (“a” and “b”)
description: Beige face brick, with a $\frac{5}{8}$ inch deep frog, but no manufacturer’s marks;
base of the frog is about $\frac{5}{8}$ inch wide and 4 inches long.
source: Smith Brick Mill, Yorkton, Sask.
manufacturer: possibly Smith Brick Yard, Yorkton Sask.
building date: 1899-1900
measures: (1) $8\frac{1}{4}$ x $3\frac{5}{8}$ x $2\frac{1}{4}$ inches / 207 x 91 x 57 mm
(2) $8\frac{1}{4}$ x $3\frac{5}{8}$ x $2\frac{1}{2}$ inches / 207 x 91 x 62 mm
weight: (1) 3 lb, 7 oz / 1.5 kg
(2) 3 lb, 12 oz / 1.7 kg
donated: 9 May 2019 – found on site brick pile



- 58.4 number of bricks: 1
description: Beige face brick, with the following inscription: **H S**
source: Smith Brick Mill, Yorkton, Sask.
manufacturer: Henry Stephens, Portage la Prairie, Manitoba
building date: 1899-1900
measures: $8\frac{1}{8}$ x $3\frac{3}{4}$ x $2\frac{1}{4}$ inches / 210 x 96 x 58 mm
weight: 3 lb, 8 oz / 1.55 kg
donated: 9 May 2019 – found on site brick pile



The Saskatchewan Brick Register

- 58.5 number of bricks: 1
description Beige face brick, with a shallow frog and the following inscription:
MOROSOF
source: Smith Brick Mill, Yorkton, Sask.
manufacturer: Morosoff Brick Yard, Yorkton, Sask.
building date: 1899-1900
measures: 8 1/8 x 3 3/4 x 2 1/4 inches / 210 x 96 x 58 mm
weight: 3 lb, 14 oz / 1.75 kg
donated: 9 May 2019 – found on site brick pile



- 58.6 number of bricks: 1
description Red face brick, with a 1/2 inch deep frog and the following inscription:
REDCLIFF BRICK & COAL CO., and screw marks on both ends as well as on the frog base (appears to be an extruded brick, repressed to insert the frog and text)
source: Smith Brick Mill, Yorkton, Sask.
manufacturer: Redcliff Brick and Coal Company, Redcliff, Alberta.
building date: 1899-1900
measures: 8 1/4 x 3 3/4 x 2 1/4 inches / 210 x 96 x 58 mm
weight: 4 lb, 10 oz / 2.15 kg
donated: 9 May 2019 – found on site brick pile



The Saskatchewan Brick Register

58.7	number of bricks:	1
	description	Beige face brick, with a shallow frog and the following poorly made inscription: YORKTON
	source:	Smith Brick Mill, Yorkton, Sask.
	manufacturer:	Yorkton Brick Yard, Yorkton, Sask.
	building date:	1899-1900
	measures:	8 ³ / ₈ x 3 ³ / ₄ x 2 ¹ / ₄ inches / 210 x 96 x 58 mm
	weight:	4 lb, 0 oz / 1.8 kg
	donated:	9 May 2019 – found on site brick pile



The Saskatchewan Brick Register

59. Donor: Jon Bemister, Alsort Store Fixtures & Interiors, Regina, Sask.

59.1 number of bricks: 1
description: Orangey-red face brick, with the following inscription: **R P B Co**, inscribed in vertical format in a shallow oval frog, with mortar affixed to the back
source: Western Implements Warehouse, 1201 Scarth Street, Regina Sask.
manufacturer: Redcliff, Alberta
building date: 1923
measures: $8 \frac{1}{4}$ x $4 \frac{1}{4}$ x $2 \frac{7}{8}$ inches / 208 x 98 x 60 mm
weight: 5 lb, 12 oz / 2.6 kg
donated: 18 Dec. 2021



The Saskatchewan Brick Register

60. Donor: Don Black, Regina, Sask.

60.1 number of bricks: 1
description: beige face brick, laminated with a green glaze
source: Crescent Apartments, by General Hospital, Regina, Sask. during demolition
building date: 1910
measures: 8 x 4 x 2 ¼ inches / 205 x 98 x 59 mm
weight: 5 lb, 12 oz / 1.6 kg
donated: 7 Nov. 2013

